

# Technical Data Sheet

## AlphaLISA® SureFire® Ultra™ p-IRF3 (Ser386) Assay Kit

ALSU-PIRF3-A500, ALSU-PIRF3-A10K, ALSU-PIRF3-A50K, ALSU-PIRF3-A-HV

### Kit Specificity

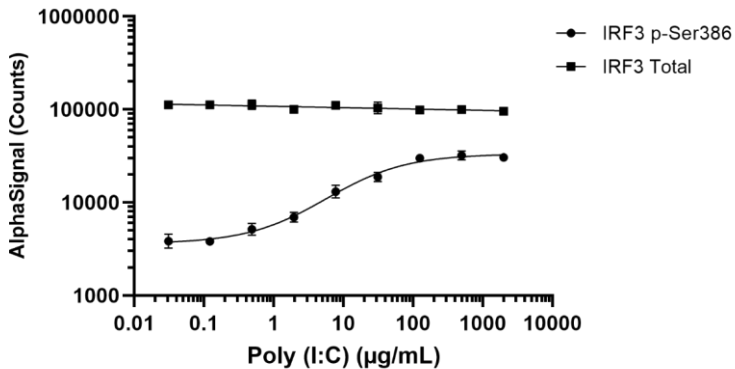
This assay kit contains antibodies which recognize the phospho-S386 epitope, and a distal epitope, on Interferon Regulatory Factor 3 (IRF3). The protein detected by this kit corresponds to UniProt ID Q14653. These antibodies recognize IRF3 of human origin. Other species should be tested on a case-by-case basis.

### Control Lysate Information

Positive Control Lysate: Prepared from A431 cells, cultured to confluence in T175 flasks in 10% FBS containing medium, then treated with 200 µg/mL poly (I:C) for 2 hrs and lysed in 10 mL of 1X *SureFire Ultra* Lysis Buffer.

### Representative Data

Data obtained with a 2-plate, 2-incubation protocol. A431 cells were plated at 200K/mL overnight in a 96 well plate in DMEM + 10% FBS. Cells were treated for 2 hrs with a dose range of Poly (I:C) in growth media. Cells were lysed in 200 µL 1X *SureFire Ultra* Lysis Buffer and assayed for Phospho (Ser386) and Total IRF3 using respective *SureFire Ultra* kits. Equivalent to approximately 2000 cells/datapoint.



For more information and detailed protocols, please refer to the generic AlphaLISA *SureFire Ultra* Assay Kits Manual, available from <http://www.perkinelmer.com/category/alpha-surefire-kits>