

Technical Data Sheet

Caution: Research use only.

AlphaLISA® SureFire® Ultra™ p-Rb (Ser780) Assay Kit

**Products: ALSU-PRB-C500, ALSU-PRB-C10K, ALSU-PRB-C50K,
ALSU-PRB-C-HV**

Kit-Specificity Information

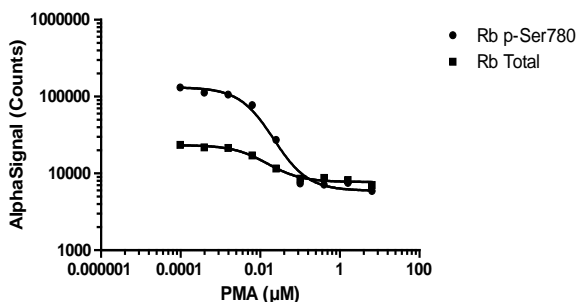
This assay kit contains antibodies that specifically recognize the phospho-Ser780 epitope, or an invariant epitope on retinoblastoma tumor suppressor protein (Rb). The human protein detected by this kit corresponds to Entrez Gene ID 5925. Rb is also known as RB transcriptional corepressor 1. These antibodies recognize Rb of human and mouse origin. Other species should be tested on a case-by-case basis.

Control Lysate Information

Positive Control Lysate: Prepared from Jurkat cells cultured in T175 flasks to approximately 1×10^6 cells/mL in 10% FBS containing medium, then treated with 1.25 mM Pervanadate for 30 minutes and lysed at 3.2×10^6 cells/mL with 1X *SureFire Ultra* Lysis buffer.

Representative data

Data obtained with a 2-plate, 2-incubation protocol. THP-1 cells were plated at 400K cells/well and transformed with PMA overnight into macrophage like adherent cells, then stimulated with the indicated concentrations of PMA. Cells were lysed with 200 μ L 1X Lysis Buffer and assayed separately for total and phospho Rb, using respective kits.



For more information and detailed protocols, please refer to the generic AlphaLISA *SureFire Ultra* Assay Kits Manual, available from <http://www.perkinelmer.com/category/alpha-surefire-kits>