

Technical Data Sheet

Caution: Research use only.

AlphaLISA® SureFire® Ultra™ p-Raf-1 (Ser338) Assay Kit

**Products: ALSU-PRAF-A500, ALSU-PRAF-A10K, ALSU-PRAF-A50K,
ALSU-PRAF-A-HV**

Kit-Specificity Information

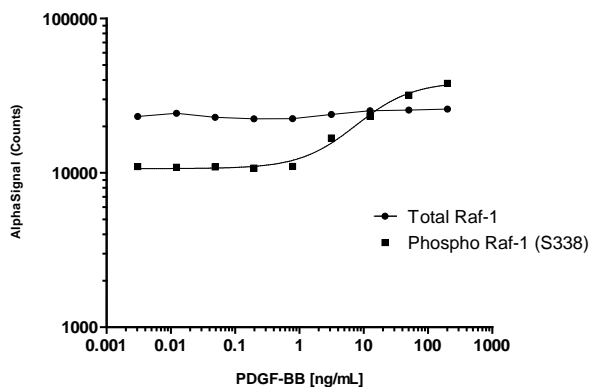
This assay kit contains antibodies which recognize phosphorylated Ser338 and an invariant epitope on Raf-1. These antibodies recognize Raf-1 of human, rat and mouse origin. Other species should be tested on a case-by-case basis. Raf-1 is also known as c-Raf. The human protein corresponds to Entrez Gene ID 5894.

Control Lysate Information

Positive Control Lysate: Prepared from HeLa cells, cultured to 90% confluence in T175 flasks in 10% FBS containing medium, then stimulated with 200 ng/mL PMA for 10 min and lysed in 4 mL of 1X *SureFire Ultra* Lysis buffer.

Representative data

Data obtained with a 2-plate, 2-incubation protocol. NIH/3T3 cells were plated at 40K cells per well in a 96 well plate and stimulated with a dose range of PDGF-BB for 10 mins. Cells were lysed with 1x *SureFire Ultra* Lysis Buffer and samples were assayed separately for Total and Phospho Raf-1 with respective kits.



For more information and detailed protocols, please refer to the generic AlphaLISA *SureFire Ultra* Assay Kits Manual, available from <http://www.perkinelmer.com/category/alpha-surefire-kits>