

# Technical Data Sheet

## AlphaLISA® SureFire® Ultra™ RIPK1 Total Assay Kit

ALSU-TRIPK1-A500, ALSU-TRIPK1-A10K, ALSU-TRIPK1-A50K, ALSU-TRIPK1-A-HV

### Kit Specificity

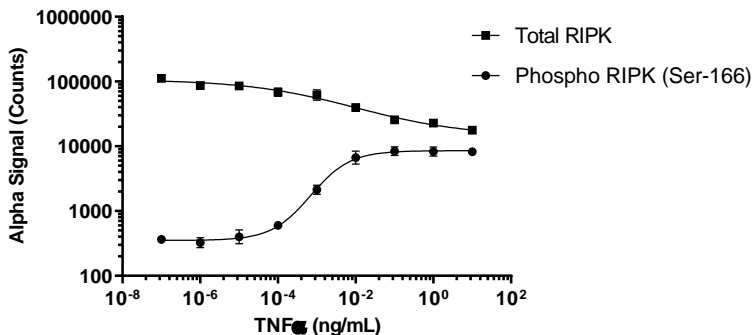
This assay kit contains antibodies which recognize invariant epitopes on RIPK1. The protein detected by this kit corresponds to UniProt ID Q13546. RIPK1 is also known as Receptor-interacting serine/threonine-protein kinase 1 or Cell death protein RIP. These antibodies recognize RIPK1 of human origin. Other species should be tested on a case-by-case basis.

### Control Lysate Information

Positive Control Lysate: Prepared from RT4 cells, cultured to confluence in T175 flasks in 10% FBS containing medium, then treated with 20  $\mu$ M Z-VAD, 50 nM SM-164 and 20 ng/mL TNF $\alpha$  for 4 hours at 37°C. Cells were lysed in 5 mL of 1X *SureFire Ultra* Lysis buffer.

### Representative Data

Data obtained with a 2-plate, 2-incubation protocol. RT4 cells were plated overnight at 40K cells/well in a 96 well plate in McCoy's media + 10% FBS. Cells were then treated with a dose range of TNF $\alpha$  in growth media containing 20  $\mu$ M Z-VAD and 50 nM SM-164 for 4 hrs at 37°C. Cells were lysed in 1X *SureFire Ultra* Lysis buffer and assayed for phospho (Ser166) or Total RIPK1 in separate wells of an assay plate with respective *SureFire Ultra* kits. Equivalent to approximately 4,000 cells/datapoint.



For more information and detailed protocols, please refer to the generic AlphaLISA *SureFire Ultra* Assay Kits Manual, available from <http://www.perkinelmer.com/category/alpha-surefire-kits>