

Technical Data Sheet

AlphaLISA® SureFire® Ultra™ Ret Total Assay Kit

ALSU-TRET-A500, ALSU-TRET-A10K, ALSU-TRET-A50K, ALSU-TRET-A-HV

Kit Specificity

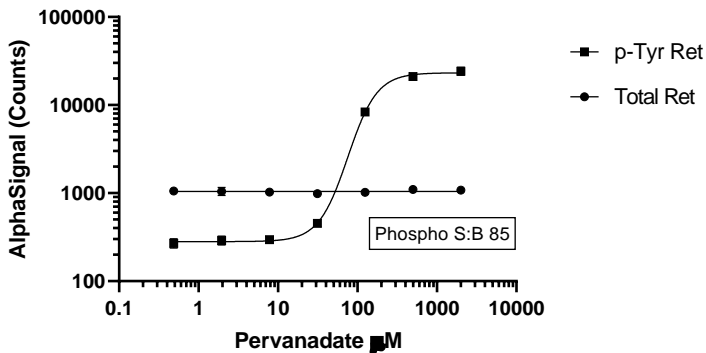
This assay kit contains antibodies which recognize invariant epitopes on Ret. The protein detected by this kit corresponds to UniProt ID P07949. Ret is also known as Cadherin family member 12 and Proto-oncogene c-Ret. These antibodies recognize Ret of human and mouse origin. Other species should be tested on a case-by-case basis.

Control Lysate Information

Positive Control Lysate: Prepared from SH-SY5Y cells cultured to confluence in T175 flasks in 10% FBS containing medium, then treated with 0.5 μ M Pervanadate for 30 minutes and lysed in 6 mL of 1X *SureFire Ultra* Lysis buffer

Representative Data

Data obtained with a 2-plate, 2-incubation protocol. SH-SY5Y cells were plated at 40K cells/well in a 96 well plate overnight in DMEM + 10% FBS. Cells were stimulated for 30 min with varying concentrations of Pervanadate in DMEM + 10% FBS. Cells were lysed in *SureFire Ultra* Lysis Buffer and diluted further prior to assaying for Phospho (pan-Tyr) and Total Ret using respective *SureFire Ultra* kits. Equivalent to approximately 125 cells/datapoint.



For more information and detailed protocols, please refer to the generic AlphaLISA *SureFire Ultra* Assay Kits Manual, available from <http://www.perkinelmer.com/category/alpha-surefire-kits>.