

Technical Data Sheet

Caution: Research use only.

AlphaLISA® SureFire® Ultra™ CDK2 Total Assay Kit

**Products: ALSU-TCDK2-A500, ALSU-TCDK2-A10K, ALSU-TCDK2-A50K,
ALSU-TCDK2-A-HV**

Kit-Specificity Information

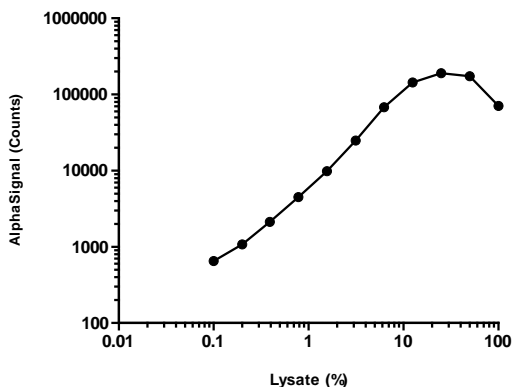
This assay kit contains antibodies that recognize invariant epitopes on Cyclin-dependent kinase 2 (CDK2). The protein detected by this kit corresponds to Entrez-Gene ID 1017. These antibodies recognize CDK2 of human origin. Other species should be tested on a case-by-case basis.

Control Lysate Information

Positive Control Lysate: Prepared from HeLa cells, cultured to 90% confluence in T175 flasks in 10% FBS containing medium, then lysed in 5ml 1X *SureFire Ultra* Lysis Buffer.

Representative data

Data obtained with a 2-plate, 2-incubation protocol. Control lysate was diluted with 1X Lysis Buffer to the concentrations indicated, and assayed for Total CDK2 using the *SureFire Ultra* kit.



For more information and detailed protocols, please refer to the generic AlphaLISA *SureFire Ultra* Assay Kits Manual, available from <http://www.perkinelmer.com/category/alpha-surefire-kits>.