

Technical Data Sheet

Alpha SureFire® Ultra™ Multiplex p-Ribosomal Protein S6 (Ser235/236) + Total Ribosomal Protein S6 Assay Kit

MPSU-PTRPS6-B500, MPSU- PTRPS6-B10K, MPSU- PTRPS6-B50K, MPSU- PTRPS6-B-HV

Kit-Specificity Information

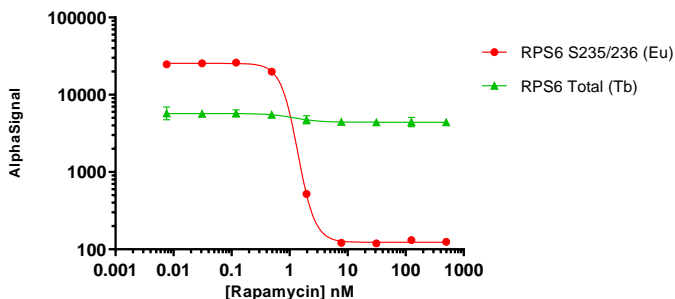
This assay kit contains antibodies which recognize the phospho-RPS6 (Ser235/236) epitope, and invariant epitopes, on RPS6. The protein detected by this kit corresponds to UniProt ID P62753. RPS6 is also known as 40S ribosomal protein S6. These antibodies recognize RPS6 of human, mouse and rat origin. Other species should be tested on a case-by-case basis.

Control Lysate Information

Positive Control Lysate: Prepared from MCF7 cells, cultured to confluence in T175 flasks in 10% FBS containing medium, starved for 2 hours, then treated with 500 µg/mL Insulin for 60 minutes and lysed in 50 mL of 1X *SureFire Ultra* Lysis buffer.

Representative Data

Data obtained with a 2-plate, 2-incubation protocol. MCF7 cells were seeded overnight at 40K cells/well in a 96 well plate in MEM + 10% FBS. Cells were inhibited for 2 h with a dose range of rapamycin in MEM + 1% FBS before treating with 2.5 µg/mL insulin for 30 mins. Cells were lysed with 1X *SureFire Ultra* Lysis buffer and assayed for Phospho (Ser235/236) and Total RPS6 in the same wells of an assay plate by Alpha *SureFire Ultra* Multiplex. Equivalent to approximately 2,000 cells/datapoint.



For more information and detailed protocols, please refer to the generic AlphaLISA *SureFire Ultra* Assay Kits Manual, available from <http://www.perkinelmer.com/category/alpha-surefire-kits>