

Technical Data Sheet

Caution: Research use only.

AlphaLISA® SureFire® Ultra™ p-eIF2α (Ser51) Assay Kit

**Products: ALSU-PEIF2-B500, ALSU- PEIF2-B10K, ALSU-PEIF2-B50K,
ALSU-PEIF2-B-HV**

Kit-Specificity Information

This assay kit contains antibodies which recognize the phospho-Ser51 epitope, and a distal epitope, on eukaryotic translation initiation factor 2 subunit 1 (eIF2α). The protein detected by this kit corresponds to GenBank Accession NP_004085. eIF2α is also known as EIF2A, EIF-2A, EIF-2alpha and EIF2S1.

These antibodies recognize eIF2α of human and mouse origin. Other species should be tested on a case-by-case basis.

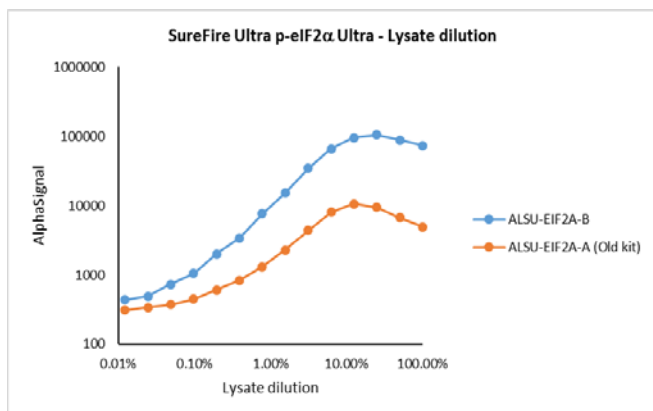
Control Lysate Information

Positive Control Lysate: Prepared from C2C12 cells, cultured to confluence in T175 flasks in 10% FBS containing medium, then treated with 1μM Thapsigargin for 30min and lysed in 4mL of 1X *SureFire Ultra* Lysis buffer.

Representative data

Data obtained with a 2-plate, 2-incubation protocol.

Data is shown for this new formulation and the previous old kit formulation.



For more information and detailed protocols, please refer to the generic AlphaLISA *SureFire Ultra* Assay Kits Manual, available from <http://www.perkinelmer.com/category/alpha-surefire-kits>