

Technical Data Sheet

Caution: Research use only.

AlphaLISA® SureFire® Ultra™ p- α -Synuclein (Ser129) Assay Kit

**Products: ALSU-PASYN-A500, ALSU-PASYN-A10K, ALSU-PASYN-A50K,
ALSU-PASYN-A-HV**

Kit-Specificity Information

This assay kit contains antibodies which recognize the phospho-Ser129 epitope, and a distal epitope, on α -Synuclein. The protein detected by this kit corresponds to Entre gene ID 20617. These antibodies recognize α -Synuclein of human, rat and mouse origin. Other species should be tested on a case-by-case basis.

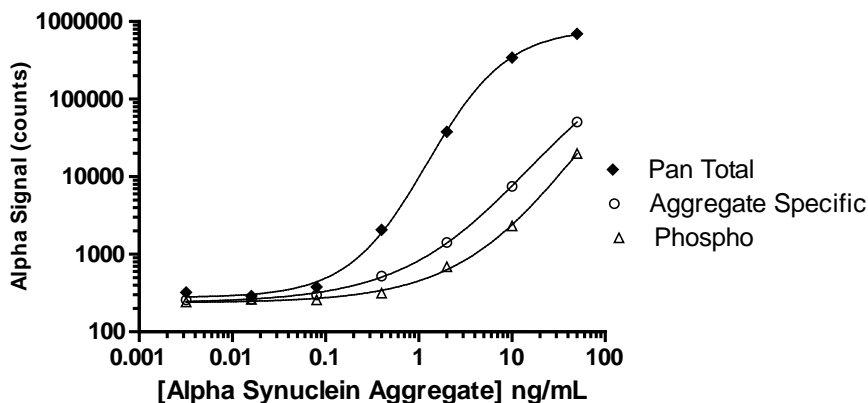
Positive Control Information

Positive Control: Prepared from recombinant human Alpha-synuclein protein aggregate (Active) at a concentration of 1 μ g/ml (Abcam cat no. ab218819).

Representative data

Data obtained with a 2-plate, 2-incubation protocol. Recombinant α -Synuclein aggregate was diluted to the concentrations shown with 1X Lysis Buffer, and assayed for α -Synuclein Total, α -Synuclein Aggregate-Specific and p- α -Synuclein (Ser129) using respective *SureFire Ultra* kits.

Alpha Synuclein Dose Responses



For more information and detailed protocols, please refer to the generic AlphaLISA *SureFire Ultra* Assay Kits Manual, available from <http://www.perkinelmer.com/category/alpha-surefire-kits>