

# Technical Data Sheet

Caution: Research use only.

## AlphaLISA® SureFire® Ultra™ p-SYK (Tyr352) Assay Kit

**Products: ALSU-PSYK-B500, ALSU-PSYK-B10K, ALSU-PSYK-B50K,  
ALSU-PSYK-B-HV**

### **Kit-Specificity Information**

This assay kit contains antibodies which recognize the phospho-Y352 epitope, and distal invariant epitopes, on SYK. The protein detected by this kit corresponds to Entrez-Gene ID 6850.

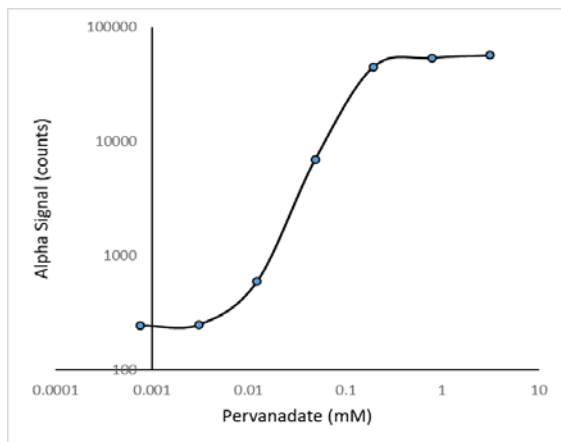
These antibodies recognize SYK of human origin. It is predicted to react also with mouse and rat. Other species should be tested on a case-by-case basis.

### **Control Lysate Information**

Positive Control Lysate: Prepared from U937 cells, cultured to  $10^6$  cells/ml in T175 flasks in 10% FBS containing medium, then treated with 1% Pervanadate for 30min and lysed to  $10^6$  cells/mL with 1X *SureFire Ultra* Lysis buffer.

### **Representative data**

Data obtained with a 2-plate, 2-incubation protocol. U937 cells were stimulated with pervanadate for 30min at the indicated concentrations.



For more information and detailed protocols, please refer to the generic AlphaLISA SureFire Ultra Assay Kits Manual, available from <http://www.perkinelmer.com/category/alpha-surefire-kits>