

Technical Data Sheet

Caution: Research use only.

AlphaLISA® SureFire® Ultra™ GAPDH Total (Mouse/Human reactive) Assay Kit

**Products: ALSU-TGAPD-B500, ALSU-TGAPD-B10K, ALSU-TGAPD-B50K,
ALSU-TGAPD-B-HV**

Kit-Specificity Information

This assay kit contains antibodies which recognize two distinct epitopes on glyceraldehyde-3-phosphate dehydrogenase (GAPDH). The protein detected by this kit corresponds to GenBank Accession NP_002037. GAPDH is also known as G3PD, GAPD, and MGC88685.

These antibodies recognize GAPDH of human and mouse origin. Other species should be tested on a case-by-case basis.

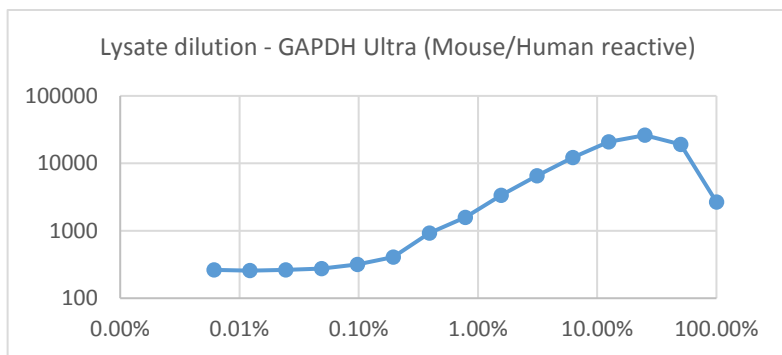
Control Lysate Information

Positive Control Lysate: Prepared from Hela cells, cultured to confluence in T75 flasks in 10% FBS containing medium, then lysed in 20mL of 1X *SureFire Ultra* Lysis buffer.

Representative data

Data obtained with a 2-plate, 2-incubation protocol

Note: Client should carry out a dilution of their samples to ensure they are assaying on the linear part of the curve. GAPDH is often expressed at a high concentration in mammalian cells.



For more information and detailed protocols, please refer to the generic AlphaLISA *SureFire Ultra* Assay Kits Manual, available from <http://www.perkinelmer.com/category/alpha-surefire-kits>