

Technical Data Sheet

Caution: Research use only.

AlphaLISA® SureFire® Ultra™ p-SHP-2 (Tyr580) Assay Kit

**Products: ALSU-PSHP2-B500, ALSU-PSHP2-B10K, ALSU-PSHP2-B50K,
ALSU-PSHP2-B-HV**

Kit-Specificity Information

This assay kit contains antibodies that specifically recognize the phospho-Tyr580-epitope, or an invariant epitope on SHP-2. The human protein detected by this kit corresponds to Entrez Gene ID 5781 (human).

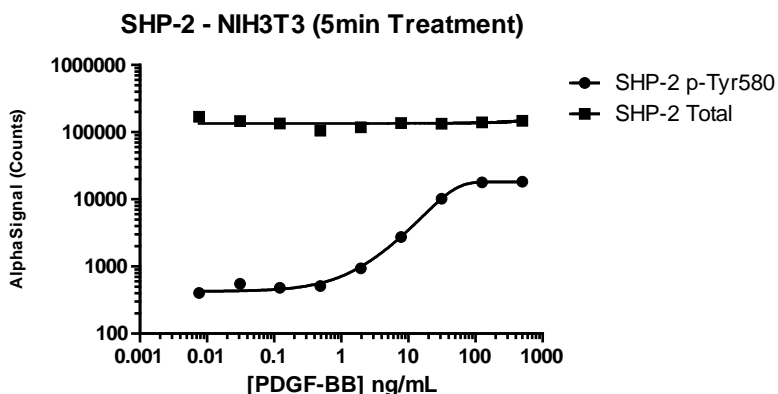
These antibodies recognize SHP-2 of human, rat and mouse origin. Other species should be tested on a case-by-case basis.

Control Lysate Information

Positive Control Lysate: Prepared from HeLa cells cultured to confluence in T175 flasks in 10%FBS containing medium, then treated with 5mM Pervanadate for 45 mins, and lysed with 10mL of 1X *SureFire Ultra* Lysis buffer.

Representative data

Data obtained with a 2-plate, 2-incubation protocol. Confluent NIH3T3 cells were stimulated for 5min with PDGF. Data shows phosphorylation of SHP-2 Tyr580 and Total SHP-2, measured with respective *SureFire Ultra* assay kits.



For more information and detailed protocols, please refer to the generic AlphaLISA *SureFire Ultra* Assay Kits Manual, available from <http://www.perkinelmer.com/category/alpha-surefire-kits>