

## AlphaLISA IL17A (Mouse / Rat) Biotin-Free Detection Kit

Product number: AL544 HV/C/F

Caution: For Laboratory Use. A research product for research purposes only.

### Contents

	Page
Product Information.....	2
Quality Control.....	2
Analyte of Interest.....	3
Description of the AlphaLISA Assay .....	3
Precautions.....	3
Kit content: Reagents and Materials.....	4
Recommendations.....	5
Assay Procedure.....	5
Data Analysis.....	8
Assay Performance Characteristics.....	9
Troubleshooting Guide.....	11

## Product Information

- Application:** This kit is designed for the quantitative determination of mouse and rat Interleukin 17A (IL17A) in cell culture supernatants using a homogeneous AlphaLISA assay (no wash steps). The kit utilizes a Digoxigenin (DIG) / Anti-DIG interaction as opposed to the traditional Streptavidin/Biotin interaction. This enables optimal performance when working with biotin-rich media (e.g. RPMI) or samples containing endogenous biotin (e.g. milk, brain extracts).
- Sensitivity:** Lower Detection Limit (LDL): 4.1 pg/mL  
Lower Limit of Quantification (LLOQ): 13.4 pg/mL  
EC<sub>50</sub>: 31.5 ng/mL
- Dynamic range:** 4.1 – 100 000 pg/mL (Figure 1).

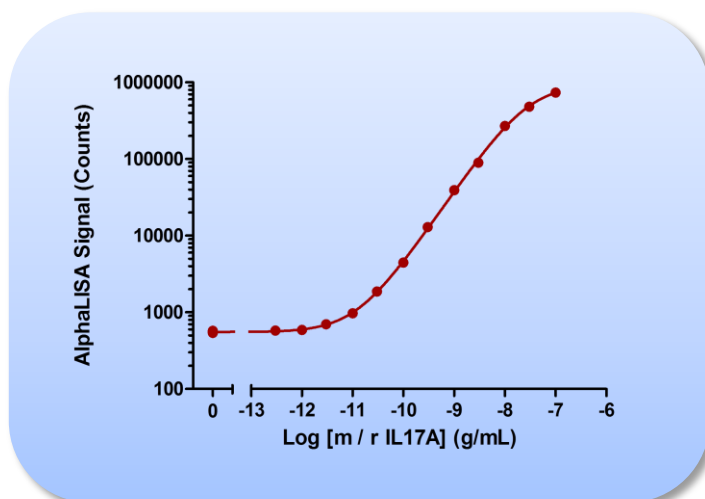


Figure1. Typical sensitivity curves in AlphaLISA Immunoassay Buffer. The data was generated using a white Optiplate™-384 microplate and the EnVision® Multilabel Plate Reader with Alpha option 2103.

- Storage:** Store kit in the dark at +4°C. Store reconstituted analyte at -20°C.
- Stability:** This product is stable for at least 6 months from the manufacturing date when stored in its original packaging and the recommended storage conditions. Note: Once reconstituted, the mouse IL17A analyte is stable for at least 75 days at -20°C.

## Quality Control

Lot to lot consistency is confirmed in an AlphaLISA assay. Maximum and minimum signals, EC<sub>50</sub> and LDL were measured on the EnVision Multilabel Plate Reader with Alpha option using the protocol described in this technical data sheet. We certify that these results meet our quality release criteria. Maximum counts may vary between bead lots and the instrument used, with no impact on LDL measurement.

## Analyte of Interest

Interleukin 17A (IL17A) is the founding member of a group of cytokines called the IL17 family. The other members are IL17B, C, D, E, and F. Mature mouse or rat IL17A is a glycosylated homodimer formed of two 133 amino acid subunits. IL17A is produced by a subset of T helper cells. It is a proinflammatory cytokine that enhances T cell priming and stimulates macrophages, fibroblasts, endothelial and epithelial cells to produce mediators of inflammation like IL1, IL6, and TNF $\alpha$ . It is also critical for neutrophil activation and migration, and induces IL8, a key chemokine for neutrophils. IL17 has been involved in the proinflammatory patterns associated with joint inflammation and rheumatoid arthritis in mouse and human models and may be a novel therapeutic target for the treatment of these diseases.

## Description of the AlphaLISA Assay

AlphaLISA technology allows the detection of molecules of interest in buffer, cell culture media, serum and plasma in a highly sensitive, quantitative, reproducible and user-friendly mode. In this AlphaLISA assay, a DIG-labeled Anti-Analyte Antibody binds to the anti-DIG Alpha Donor beads, while another Anti-Analyte Antibody is conjugated to AlphaLISA Acceptor beads. In the presence of the analyte, the beads come into close proximity. The excitation of the Donor beads provokes the release of singlet oxygen molecules that triggers a cascade of energy transfer in the Acceptor beads, resulting in a sharp peak of light emission at 615 nm (Figure 2).

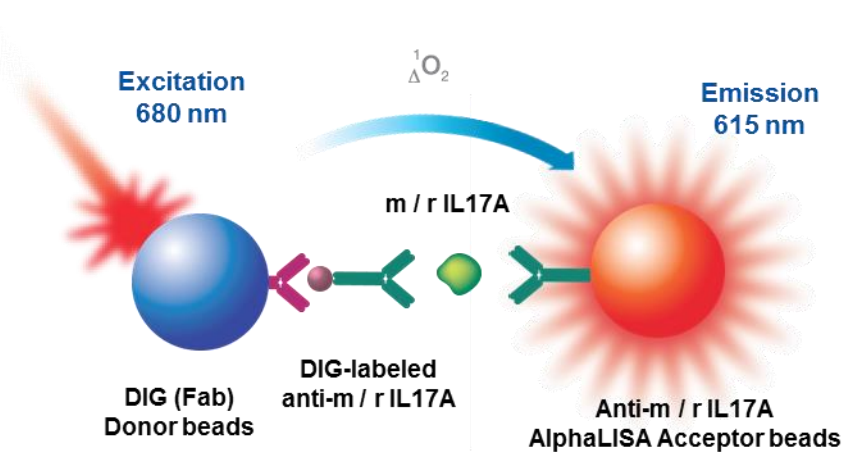


Figure 2. AlphaLISA Assay principle.

## Precautions

- Anti-Digoxigenin Fab Fragment Donor beads are light-sensitive. All the other assay reagents can be used under normal light conditions. All Alpha assays using the Donor beads should be performed under subdued laboratory lighting (< 100 lux). Green filters (LEE 090 filters (preferred) or Roscolux filters #389 from Rosco) can be applied to light fixtures.
- All blood components and biological materials should be handled as potentially hazardous. The analyte included in this kit is from a Mouse source.
- Some analytes are present in saliva. Take precautionary measures to avoid contamination of the reagent solutions.
- The DIG labeled anti-analyte antibody is toxic. Contact with skin or inhalation should be avoided.

## Kit Content: Reagents and Materials

Kit components	AL544HV (100 assay points <sup>***</sup> )	AL544C (500 assay points <sup>***</sup> )	AL544F (5000 assay points <sup>***</sup> )
AlphaLISA Anti-m / r IL17A Acceptor beads stored in PBS, 0.05% Proclin-300, pH 7.2	20 µL @ 5 mg/mL (1 brown tube, <u>white</u> cap)	50 µL @ 5 mg/mL (1 brown tube, <u>white</u> cap)	500 µL @ 5 mg/mL (1 brown tube, <u>white</u> cap)
Anti-Digoxigenin Fab Fragment Donor beads stored in 25 mM HEPES, 100 mM NaCl, 0.05% Proclin-300, pH 7.4	80 µL @ 5 mg/mL (1 brown tube, <u>black</u> cap)	200 µL @ 5 mg/mL (1 brown tube, <u>black</u> cap)	2 x 1 mL @ 5 mg/mL (2 brown tubes, <u>black</u> caps)
DIG labeled Anti-m / r IL17A stored in PBS, 0.1% Tween-20, 0.05% NaN <sub>3</sub> , pH 7.4	20 µL @ 500 nM (1 tube, <u>black</u> cap)	50 µL @ 500 nM (1 tube, <u>black</u> cap)	500 µL @ 500 nM (1 tube, <u>black</u> cap)
Lyophilized mouse IL17A*	0.1 µg 1 tube, <u>clear</u> cap	0.1 µg 1 tube, <u>clear</u> cap	0.1 µg 1 tube, <u>clear</u> cap
AlphaLISA Immunoassay Buffer (10X)**	2 mL, 1 small bottle	10 mL, 1 medium bottle	100 mL, 1 large bottle

\* Reconstitute mouse IL17A in 100 µL Milli-Q<sup>®</sup> grade H<sub>2</sub>O. The reconstituted analyte should be used within 60 minutes or aliquoted into screw-capped polypropylene vials and stored at 4°C for further experiments. Avoid multiple freeze-thaw cycles. It has been demonstrated that reconstituted mouse IL17A is stable for at least 75 days at -20°C. One vial contains an amount of mouse IL17A sufficient for performing 10 standard curves. Additional vials can be ordered separately (cat # AL514S).

\*\* Extra buffer can be ordered separately (cat # AL000C: 10 mL, cat # AL000F: 100 mL).

\*\*\* The number of assay points is based on an assay volume of 100 µL in 96-well plates or 50 µL in 96- or 384-well assay plates using the kit components at the recommended concentrations.

Sodium azide should **not** be added to the stock reagents. High concentrations of sodium azide (> 0.001 % final in the assay) might decrease the AlphaLISA signal.

### Specific additional required reagents and materials:

The following materials are recommended:

Item	Suggested source	Catalog #
TopSeal™-A Plus Adhesive Sealing Film	PerkinElmer Inc.	6050185
EnVision®-Alpha Reader	PerkinElmer Inc.	-

## Recommendations

- The volume indicated on each tube is guaranteed for single pipetting. Multiple pipetting of the reagents may reduce the theoretical amount left in the tube. To minimize loss when pipetting beads, it is preferable not to pre-wet the tip.
- Centrifuge all tubes (including lyophilized analyte) before use to improve recovery of content (2000g, 10-15 sec). Re-suspend all reagents by vortexing before use.
- Use Milli-Q<sup>®</sup> grade H<sub>2</sub>O (18 MΩ·cm) to dilute 10X AlphaLISA Immunoassay Buffer to reconstitute the lyophilized analyte.
- When diluting the standard or samples, change tips between each standard or sample dilution. When loading reagents in the assay microplate, change tips between each standard or sample addition and after each set of reagents.
- When reagents are added to the microplate, make sure the liquids are at the bottom of the well.
- Small volumes may be prone to evaporation. It is recommended to cover microplates with TopSeal-A Adhesive Sealing Films to reduce evaporation during incubation. Microplates can be read with the TopSeal-A Film.
- The AlphaLISA signal is detected with an EnVision Multilabel Reader equipped with the Alpha option using the AlphaScreen standard settings (e.g. Total Measurement Time: 550 ms, Laser 680 nm Excitation Time: 180 ms, Mirror: D640as, Emission Filter: M570w, Center Wavelength 570 nm, Bandwidth 100 nm, Transmittance 75%).
- AlphaLISA signal will vary with temperature and incubation time. For consistent results, identical incubation times and temperature should be used for each plate.
- The standard curves shown in this technical data sheet are provided for information only. A standard curve must be generated for each experiment. The standard curve should be performed in the Immunoassay buffer for serum and/or plasma samples.

## Assay Procedure

IMPORTANT: PLEASE READ THE RECOMMENDATIONS BELOW BEFORE USE

- The protocol described below is an example for generating one standard curve in a 50 µL final assay volume (48 wells, triplicate determinations). The protocols also include testing samples in 452 wells. If a different amount of samples are tested, the volumes of all reagents have to be adjusted accordingly, as shown in the table below. These calculations do not include excess reagent to account for losses during transfer of solutions or dead volumes.
- The standard dilution protocol is provided for information only. As needed, the number of replicates or the range of concentrations covered can be modified.
- Use of four background points in triplicate (12 wells) is recommended when LDL/LLOQ is calculated. One background point in triplicate (3 wells) can be used when LDL/LLOQ is not calculated.

Format	# of data points	Volume				Plate recommendation
		Final	Sample	AlphaLISA beads / Anti-DIG Antibody MIX	Donor beads	
AL544HV	100	100 µL	10 µL	10 µL	80 µL	White OptiPlate-96 (cat # 6005290) White ½ AreaPlate-96 (cat # 6005560)
AL544C	250	100 µL	10 µL	10 µL	80 µL	White OptiPlate-96 (cat # 6005290) White ½ AreaPlate-96 (cat # 6005560)
	500	50 µL	5 µL	5 µL	40 µL	White ½ AreaPlate-96 (cat # 6005560) White OptiPlate-384 (cat # 6007290) Light gray AlphaPlate™-384 (cat # 6005350)
	1 250	20 µL	2 µL	2 µL	16 µL	Light gray AlphaPlate-384 (cat # 6005350) ProxiPlate™-384 Plus (cat # 6008280) White OptiPlate-384 (cat # 6007290)
	2 500	10 µL	1 µL	1 µL	8 µL	Light gray AlphaPlate-1536 (cat # 6004350)
AL544F	5 000	50 µL	5 µL	5 µL	40 µL	White ½ AreaPlate-96 (cat # 6005560) White OptiPlate-384 (cat # 6007290) Light gray AlphaPlate-384 (cat # 6005350)
	12 500	20 µL	2 µL	2 µL	16 µL	Light gray AlphaPlate-384 (cat # 6005350) ProxiPlate-384 Plus (cat # 6008280) White OptiPlate-384 (cat # 6007290)
	25 000	10 µL	1 µL	1 µL	8 µL	Light gray AlphaPlate-1536 (cat # 6004350)

**High Concentration 2 step protocol - The protocol described below is for 500 assay points including one standard curve (48 wells) and samples (452 wells).**

*If a different amount of samples are tested, the volumes of all reagents have to be adjusted accordingly.*

1) Preparation of 1X AlphaLISA Immunoassay Buffer:

Add 3 mL of 10X AlphaLISA Immunoassay Buffer to 27 mL H<sub>2</sub>O.

2) Preparation of mouse IL17A analyte standard dilutions:

a) Reconstitute lyophilized mouse IL17A (0.1 µg) in 100 µL of H<sub>2</sub>O.

b) Prepare standard dilutions as follows in 1X AlphaLISA Immunoassay Buffer (change tip between each standard dilution):

Tube	Vol. of mouse IL17A (µL)	Vol. of diluent (µL) *	[mouse IL17A] in standard curve	
			(g/mL in 5 µL)	(pg/mL in 5 µL)
A	10 µL of reconstituted mouse IL17A	90	1.00E-07	100 000
B	60 µL of tube A	140	3.00E-08	30 000
C	60 µL of tube B	120	1.00E-08	10 000
D	60 µL of tube C	140	3.00E-09	3 000
E	60 µL of tube D	120	1.00E-09	1 000
F	60 µL of tube E	140	3.00E-10	300
G	60 µL of tube F	120	1.00E-10	100
H	60 µL of tube G	140	3.00E-11	30
I	60 µL of tube H	120	1.00E-11	10
J	60 µL of tube I	140	3.00E-12	3
K	60 µL of tube J	120	1.00E-12	1
L	60 µL of tube K	140	3.00E-13	0.3
M ** (background)	0	100	0	0
N ** (background)	0	100	0	0
O ** (background)	0	100	0	0
P ** (background)	0	100	0	0

\* Dilute standards in diluent (e.g. 1X AlphaLISA Immunoassay Buffer).

At low concentrations of analyte, a significant amount of analyte can bind to the vial. Therefore, load the analyte standard dilutions in the assay microplate within 60 minutes of preparation.

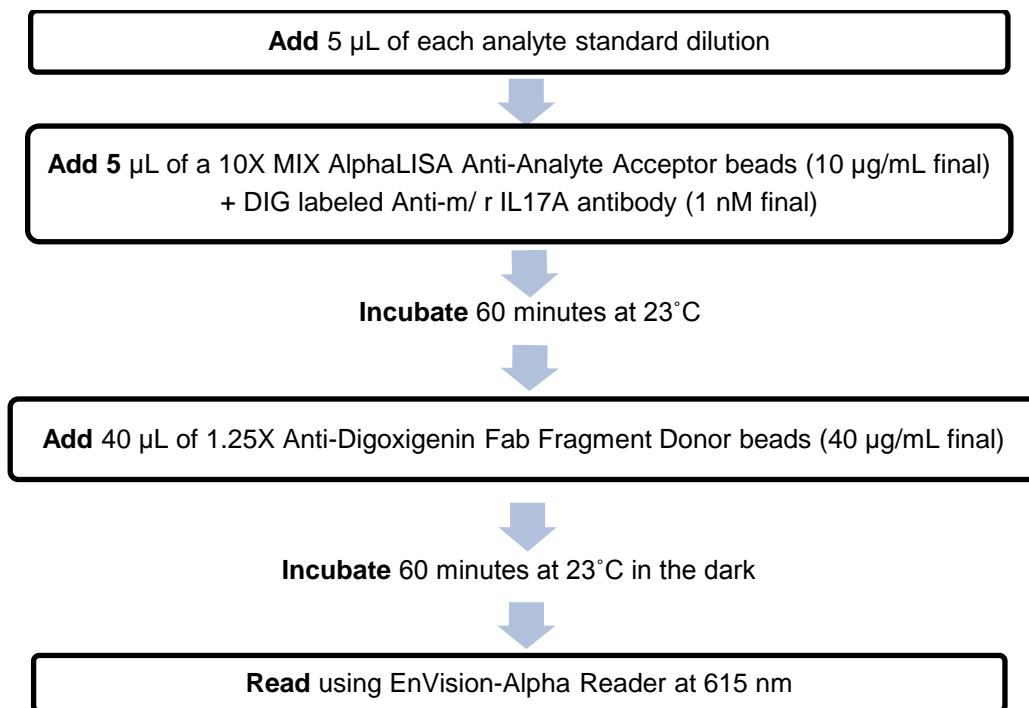
\*\* Four background points in triplicate (12 wells) are used when LDL is calculated. If LDL does not need to be calculated, one background point in triplicate can be used (3 wells).

3) Preparation of 10X AlphaLISA Anti-m/ r IL17A Acceptor beads (100 µg/mL) + DIG labeled Anti-m/ r IL17A Antibody (10 nM) MIX:

a. Add 50 µL of 5 mg/mL AlphaLISA Anti-m/ r IL17A Acceptor beads and 50 µL of 500 nM DIG labeled Anti-m/ r IL17A Antibody to 2400 µL of 1X AlphaLISA Immunoassay Buffer.

b. Prepare just before use.

- 4) Preparation of 1.25X Anti-Digoxigenin Fab Fragment Donor beads (50 µg/mL):
- Keep the beads under subdued laboratory lighting.
  - Add 200 µL of 5 mg/mL Anti-Digoxigenin Fab Fragment Donor beads to 19800 µL of 1X AlphaLISA Immunoassay Buffer.
  - Prepare just before use.
- 5) In a white Optiplate (384 wells):



## Data Analysis

- Calculate the average count value for the background wells.
- Generate a standard curve by plotting the AlphaLISA counts versus the concentration of analyte. A log scale can be used for either or both axes. No additional data transformation is required.
- Analyze data according to a nonlinear regression using the 4-parameter logistic equation (sigmoidal dose-response curve with variable slope) and a  $1/Y^2$  data weighting (the values at maximal concentrations of analyte after the hook point should be removed for correct analysis).
- The LDL is calculated by interpolating the average background counts (12 wells without analyte) + 3x standard deviation value (average background counts + (3xSD)) on the standard curve.
- The LLOQ as measured here is calculated by interpolating the average background counts (12 wells without analyte) + 10 x standard deviation value (average background counts + (10xSD)) on the standard curve. Alternatively, the true LLOQ can be determined by spiking known concentrations of analyte in the matrix and measuring the percent recovery, and then determining the minimal amount of spiked analyte that can be quantified within a given limit (usually +/- 20% or 30% of the real concentration).
- Read from the standard curve the concentration of analyte contained in the samples.
- If samples have been diluted, the concentration read from the standard curve must be multiplied by the dilution factor.



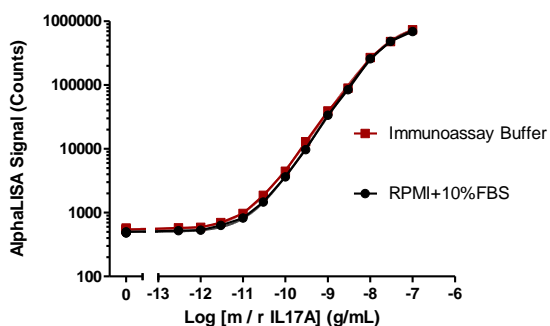
## Assay Performance Characteristics

AlphaLISA assay performance described below was determined using the High Concentration 2 step protocol.

- Assay Sensitivity:

The LDL was calculated as described in the data analysis section. The values correspond to the lowest concentration of analyte that can be detected using the recommended assay conditions.

LDL (pg/mL)	Buffer/Media	# of experiments
4.1	Immunoassay Buffer	9
4.1	RPMI with 10% FBS	9



\* Note that LDL can be decreased (i.e. sensitivity increased) by increasing the volume of analyte in the assay (e.g. use 10  $\mu$ L of analyte in a final assay volume of 50  $\mu$ L).

- Assay Precision:

The following assay precision data were calculated from the three independent assays using two different kit lots. In each lot, the analytes were prepared in AlphaLISA Immunoassay Buffer, or RPMI. Each assay consisted of one standard curve comprising 12 data points (each in triplicate) and 12 background wells (no analytes). The assays were performed in 384-well format using AlphaLISA Immunoassay Buffer.

Intra-assay precision:

The intra-assay precision was determined using 3 independent experiments for a total of 16 independent determinations in triplicate. CV% were calculated for each individual experiment then averaged. Shown is the average intra-experimental CV%.

m / r IL17A	Immunoassay Buffer	RPMI
CV%	5%	4%

- Inter-assay precision:

The inter-assay precision was determined using the data across 3 independent experiments with 16 measurements in triplicate. CV% was calculated by comparing the same measurement in each experiment. The CV% for all 16 measurements was then averaged. Shown is the inter-experimental CV%.

m / r IL17A	Immunoassay Buffer	RPMI
CV%	11%	11%

- Spike Recovery:

Four known concentrations of analyte were spiked in AlphaLISA Immunoassay Buffer and cell culture media supplemented with 10% FBS. The spiked samples were referenced to the analyte curve produced in AlphaLISA Immunoassay Buffer and cell culture media.

Spiked m IL17A (ng/mL)	% Recovery	
	Immunoassay Buffer	RPMI
1	103	99
0.3	103	98
0.1	98	100
0.03	103	102

- Specificity:

Cross-reactivity of the AlphaLISA m / r IL17A Kit was tested using the following proteins at 0.1 µg/mL in AlphaLISA Immunoassay Buffer.

Protein	% Cross-reactivity
Rat IL17A	83
Human IL17A	0
Rat IL17 AF	80
Mouse IL17 AF	74
Rat IL17F	0
Mouse IL17F	0

## Troubleshooting Guide

You will find detailed recommendations for common situations you might encounter with your AlphaLISA Assay kit at:

[http://www.perkinelmer.com/in/resources/technicalresources/applicationsupportknowledgebase/alphalisa-alphascreen-no-washassays/alpha\\_troubleshoot.xhtml](http://www.perkinelmer.com/in/resources/technicalresources/applicationsupportknowledgebase/alphalisa-alphascreen-no-washassays/alpha_troubleshoot.xhtml)

**FOR RESEARCH USE ONLY. NOT FOR USE IN DIAGNOSTIC PROCEDURES.**

**This product is not for resale or distribution except by authorized distributors.**

**LIMITED WARRANTY:** PerkinElmer BioSignal Inc. warrants that, at the time of shipment, the products sold by it are free from defects in material and workmanship and conform to specifications which accompany the product. PerkinElmer BioSignal Inc. makes no other warranty, express or implied with respect to the products, including any warranty of merchantability or fitness for any particular purpose. Notification of any breach of warranty must be made within 60 days of receipt unless otherwise provided in writing by PerkinElmer BioSignal Inc. No claim shall be honored if the customer fails to notify PerkinElmer BioSignal Inc. within the period specified. The sole and exclusive remedy of the customer for any liability of PerkinElmer BioSignal Inc. of any kind including liability based upon warranty (express or implied whether contained herein or elsewhere), strict liability contract or otherwise is limited to the replacement of the goods or the refunds of the invoice price of goods. PerkinElmer BioSignal Inc. shall not in any case be liable for special, incidental or consequential damages of any kind.

PerkinElmer, Inc.  
940 Winter Street  
Waltham, MA 02451 USA  
P: (800) 762-4000 or  
(+1) 203-925-4602  
[www.perkinelmer.com](http://www.perkinelmer.com)



---

For a complete listing of our global offices, visit [www.perkinelmer.com/ContactUs](http://www.perkinelmer.com/ContactUs)

Copyright© 2012, PerkinElmer, Inc. All rights reserved. PerkinElmer® is a registered trademark of PerkinElmer, Inc. All other trademarks are the property of their respective owners.