

# Technical Data Sheet

## AlphaLISA® SureFire® Ultra™ p-RSK1 (Thr359/Ser363) Assay Kit

ALSU-PRSK1-B500, ALSU-PRSK1-B10K, ALSU-PRSK1-B50K, ALSU-PRSK1-B-HV

### Kit Specificity

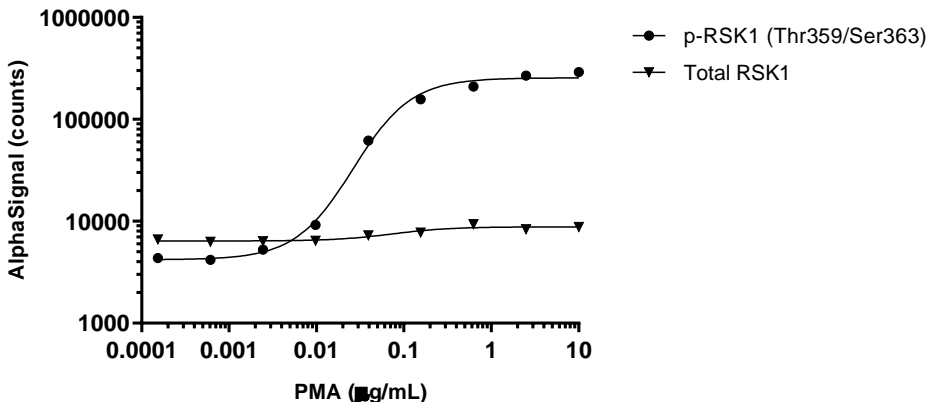
This assay kit contains antibodies which recognize phospho-Thr359/Ser363 epitope, and a distal epitope, on RSK1. The protein detected by this kit corresponds to UniProt ID Q15418. RSK1 is also known as 90 kDa ribosomal protein S6 kinase 1. These antibodies recognize RSK1 of human, rat and mouse origin. Other species should be tested on a case-by-case basis.

### Control Lysate Information

Positive Control Lysate: Prepared from A431 cells, cultured to confluence in T175 flasks in 10% FBS containing medium, medium removed and then treated with 200 ng/mL EGF for 10 minutes and lysed in 10 mL of 1X *SureFire Ultra* Lysis buffer.

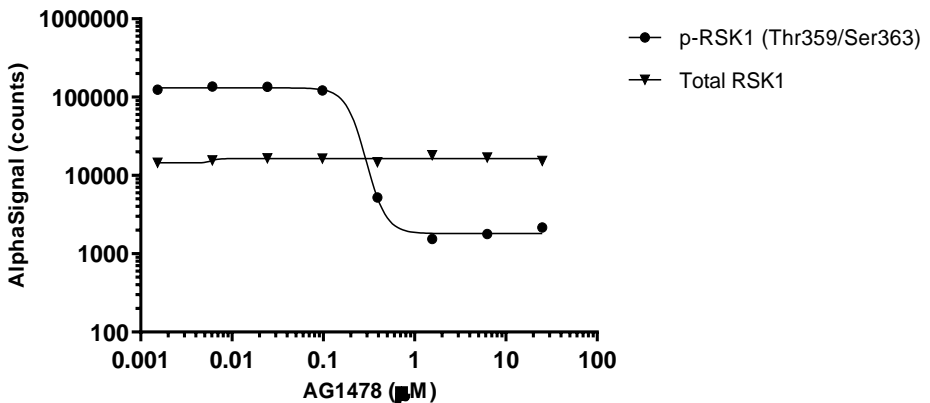
### Representative Data

Data obtained with a 2-plate, 2-incubation protocol. A431 cells were seeded at  $4 \times 10^4$  cells per well in a 96 well plate and incubated overnight. Cells were serum starved for 2 hours prior to treatment with PMA at the indicated concentrations for 10 minutes. Cells were lysed with 1x Lysis buffer and assayed for Total or Phospho (T359/S363) RSK1 in separate wells of an assay plate with respective *SureFire Ultra* kits. Equivalent to approximately 4,000 cells/datapoint.



# Technical Data Sheet

A431 cells were seeded at  $4 \times 10^4$  cells per well in a 96 well plate and incubated overnight. Cells were treated with AG1478 at the indicated concentrations for 2 hours prior to treatment with 20 ng/mL EGF for 10 minutes. Cells were lysed with 1x Lysis buffer and assayed for Total or Phospho (T359/S363) RSK1 in separate wells of an assay plate with respective *SureFire Ultra* kits. Equivalent to approximately 4,000 cells/datapoint.



For more information and detailed protocols, please refer to the generic AlphaLISA *SureFire Ultra* Assay Kits Manual, available from <http://www.perkinelmer.com/category/alpha-surefire-kits>