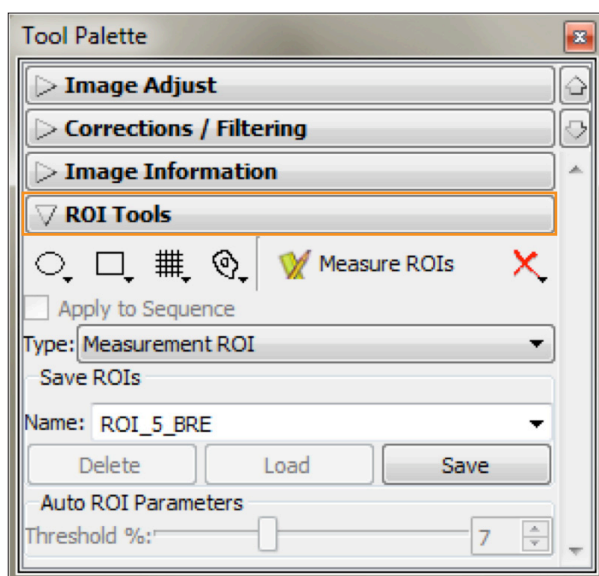


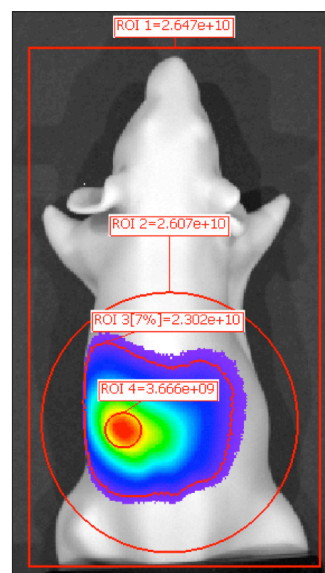
## Drawing ROIs

The circle, square, free draw, or grid (for well plates) can be used to draw your ROIs. ROI selections are user-specific and are dependent on the model being analyzed. It is irrelevant which shape that is used for a particular ROI.



Remember the rule – **larger ROIs are better**. Background bioluminescence levels are very low so it is advantageous to draw larger ROIs to include the entire area of signal diffusion. Do not focus on the intense area generally represented by the red color. One must also take into account the entire diffusion pattern.

Notice that the square, large circular and contour ROIs have a similar total flux – whereas the small circular ROI concentrating on the most intense portion of the surface intensity represents just 14% of your signal (determined by expressing it as a percentage of the mean of the other 3 ROIs).



**Note:** An auto drawing feature is available to assist with ROI drawing, if the user decides to take advantage of this feature notice that the **Threshold %** slider will be activated at the bottom of the **ROI Tools** section of the **Tool Palette**. Recommended setting for the threshold is between 5-10%. Free draw gives you complete control over the shape of the ROI. Draw by clicking on areas you would like to connect and then close the ROI by clicking the right mouse button.

