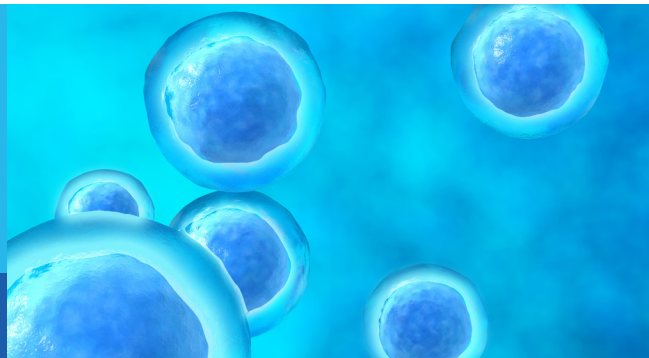


In Vivo Oncology Research Reagents



Bioware® Brite Bioluminescent Oncology Cell Lines

Expand your oncology models to deep tissue tumors with brighter, red-shifted cell lines. PerkinElmer's Bioware Brite light-producing cell lines are significantly brighter than other firefly luciferases. In *in vitro* validation studies have shown Red-Fluc to have 10-20 fold higher signal intensity compared to the native firefly luciferase, while Red-Fluc cells implanted in deep tissues *in vivo* generate about 50% higher bioluminescence signal¹. Available in a wide range of cancer models including breast, colorectal, lung, and prostate, these cells have been stably transduced with the red-shifted firefly luciferase gene from *Luciola Italica* (Red-Fluc), for a brighter, red-shifted signal.

By emitting intensified, longer wavelength light, the optimized Red-Fluc luciferase enables more sensitive in vivo optical imaging with less tissue attenuation so you can detect tumor development earlier, and monitor tumor growth and metastases in both subcutaneous and orthotopic models.

Bioware® Brite cell lines labeled with enhanced Red-Fluc vector.

Cell Line	Species	Tissue Origin	Disease	Product Number
4T1*	Mouse	Breast	Adenocarcinoma	BW124087
A549	Human	Lung	Carcinoma	BW119266
B16F10	Mouse	Skin	Melanoma	BW124734
BxPC3	Human	Pancreas	Adenocarcinoma	BW125058
Colo205	Human	Colorectal	Adenocarcinoma	BW124317
GL261*	Mouse	Brain	Glioma	BW134246
HCT116	Human	Colorectal	Carcinoma	BW124318
HepG2	Human	Liver	Hepatocellular Carcinoma	BW134280
HT1080	Human	Connective Tissue	Fibrosarcoma	BW128092
HT29	Human	Colorectal	Adenocarcinoma	BW124353
K562	Human	Bone Marrow	Chronic Myelogenous Leukemia	BW124735
LL/2	Mouse	Lung	Carcinoma	BW119267
LNCaP	Human	Prostate	Carcinoma	BW125055
MCF7	Human	Breast	Adenocarcinoma	BW119262
NCI-H460	Human	Lung	Adenocarcinoma	BW124316
PC3	Human	Prostate	Adenocarcinoma	BW128444
SKOV3	Human	Ovarian	Adenocarcinoma	BW119276
U87 MG	Human	Brian	Glioblastoma	BW124577

Bioware® Brite Ultra Green cell lines dual-labeled with enhanced Red-Fluc vector and Green Fluorescent Protein.

Cell Line	Species	Tissue Origin	Disease	Product Number
4T1*	Mouse	Breast	Adenocarcinoma	BW128090
PC3	Human	Prostate	Adenocarcinoma	BW133416

*We recommend using this line in Nude and SCID mouse models. An immune response may occur in Balb/c mice.

Reference

1. Peterson et al. Poster, WMIC 2014.

PerkinElmer, Inc.
940 Winter Street
Waltham, MA 02451 USA
P: (800) 762-4000 or
(+1) 203-925-4602
www.perkinelmer.com



For a complete listing of our global offices, visit www.perkinelmer.com/ContactUs

Copyright ©2018, PerkinElmer, Inc. All rights reserved. PerkinElmer® is a registered trademark of PerkinElmer, Inc. All other trademarks are the property of their respective owners.