

# AlphaScreen® *SureFire*® CASP9 (p-Ser196) Assay Kits

## Manual

Assay Points	Catalog #
500	TGRC9S500
10 000	TGRC9S10K
50 000	TGRC9S50K

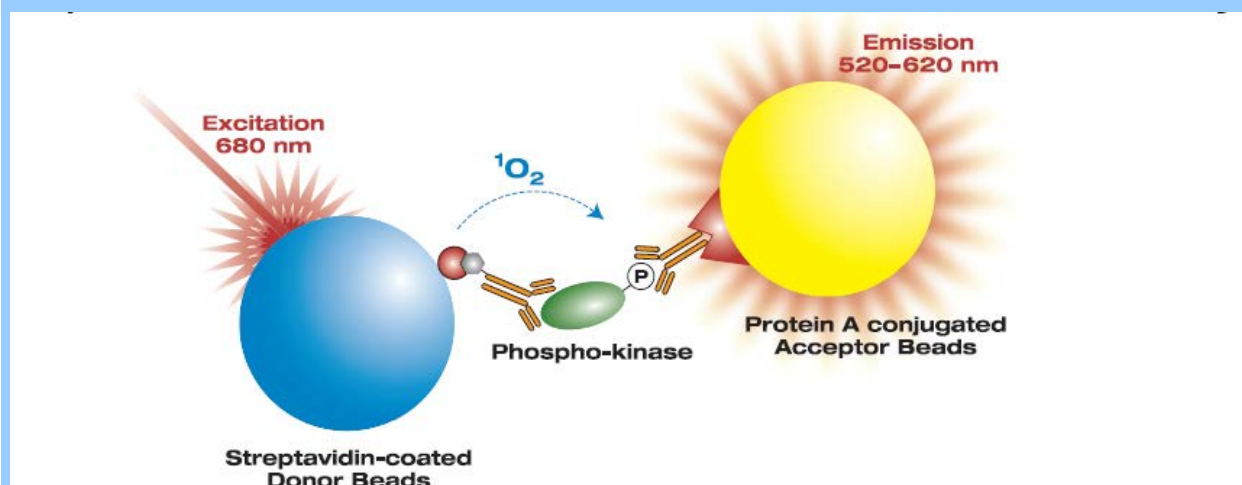
For Research Use Only  
Research Reagents for Research Purposes Only

## General Information on the AlphaScreen® *SureFire*® CASP9 p-Ser196 assay

The AlphaScreen® *SureFire*® CASP9 p-Ser196 assay is used to measure the phosphorylation of endogenous CASP9 in cellular lysates. The assay is an ideal system for the screening agents acting intracellularly, such as small molecule inhibitors of upstream events, and can be applied to primary cells.

This assay eliminates the need for laborious techniques, such as Western blotting or conventional ELISA. It is a homogeneous assay, in that no sample washing steps are required, which allows for minimal handling, short assay times, and robotic operation if desired. The assay utilizes the bead-based Alpha Technology, and requires an Alpha Technology-compatible plate reader.

### Alpha Technology AlphaScreen® *SureFire*® Assay Principle



AlphaScreen® *SureFire*® technology allows the detection of phosphorylated proteins in cellular lysates in a highly sensitive, quantitative and user friendly assay. In these assays, sandwich antibody complexes, which are only formed in the presence of analyte, are captured by AlphaScreen donor and acceptor beads, bringing them into close proximity. The excitation of the donor bead provokes the release of singlet oxygen molecules that triggers a cascade of energy transfer in the Acceptor beads, resulting in the emission of light at 520-620nm.

### Kit-Specificity information

This assay kit contains antibodies which recognize the phospho-Ser196 epitope, and a distal epitope, on caspase 9, apoptosis-related cysteine peptidase (CASP9). The protein detected by this kit corresponds to GenBank Accession NP\_001220. CASP9 is also known as MCH6, APAF3, APAF-3, ICE-LAP6 and CASPASE-9c.

These antibodies recognize CASP9 of human origin. Other species should be tested on a case-by-case basis.

## Kit Contents

	Kit Size		
	500 points	10,000 points	50,000 points
Lysis buffer (5X)	1 x 10 mL	4 x 60 mL	3 x 400 mL
Activation buffer B	1 x 2 mL	1 x 60 mL	1 x 300 mL
Reaction buffer	1 x 2.6 mL	1 x 45 mL	1 x 225 mL
Dilution buffer	1 x 1.5 mL	1 x 25 mL	2 x 60 mL
Positive Control Lysate	1 tube to be re-dissolved in 250 µL H <sub>2</sub> O		
Negative Control Lysate	1 tube to be re-dissolved in 250 µL H <sub>2</sub> O		

### Storage conditions upon receipt

The kit buffers e.g. 5X Lysis buffer, Activation buffer B and Reaction buffer should be stored at 4°C. **DO NOT** freeze the kit buffers – the Reaction buffer contains antibodies and freeze/thaw cycles can lead to a loss of activity.

### Materials Required But Not Provided

The AlphaScreen *SureFire* assay kits are optimized to work with AlphaScreen Protein A general IgG detection beads. These are available separately from PerkinElmer. The AlphaScreen Protein A general IgG detection kits contain a biotinylated rabbit IgG control, which can be used to test the instrument settings and bead performance.

Item	Suggested source	Catalog #	Size
Protein A general IgG detection kit (contains the Acceptor and Donor Beads)	PerkinElmer Inc.	6760617C 6760617M 6760617R	500 pt 10,000 pt 50,000 pt
Proxiplate™-384 Plus, white, shallow well assay plate	PerkinElmer Inc.	6008280 6008289	50/box 200/box
Optiplate™-384 Plus, white, assay plate	PerkinElmer Inc.	6007290 6007299	50/box 200/box
TopSeal-A 384, clear adhesive sealing film	PerkinElmer Inc.	6050185	100/box
Envision® or Enspire® Alpha-reader	PerkinElmer Inc.	-	-

### Buffer preparation and subsequent storage conditions

5X Lysis buffer	Store 5X Lysis buffer at 4°C. For assay, dilute <b>5-fold</b> in water immediately prior to use. Discard unused buffer.
Activation buffer B	Precipitation will occur during storage 4°C. To re-dissolve, warm to 37°C and mix. Alternatively, Activation buffer B can be stored at room temperature with no loss in activity.
Reaction buffer*	Keep on ice while in use. Do not freeze. Once diluted discard unused reaction buffer.
AlphaScreen® Protein A IgG Kit	Store at 4°C in the dark.
<b>Acceptor Mix</b> (Reaction buffer + Activation buffer B + AlphaScreen® Acceptor beads)	Immediately prior to use, dilute Activation buffer B <b>5-fold</b> in Reaction buffer (e.g. take 98 µL Activation buffer B and dilute in 392 µL Reaction buffer).  Dilute Acceptor beads <b>50-fold</b> in Acceptor mix (e.g. add 10 µL Acceptor beads to 490 µL of premixed Reaction buffer + Activation buffer B).  The Acceptor mix should be used immediately for best results. Excess mix should be discarded.
<b>Donor Mix**</b> (Dilution buffer + AlphaScreen® Donor beads)	Immediately prior to use, dilute Donor beads <b>20-fold</b> in Dilution buffer (e.g. add 10 µL Donor beads to 190 µL Dilution buffer).  The Donor mix should be used immediately for best results. Excess mix should be discarded.
Assay Control lysate	After reconstitution in 250 µL water, lysates should be frozen at -20°C in single use aliquots and used within 1 month.

\* Do not vortex the Reaction buffer, as vigorous mixing can damage some antibodies.

\*\* Prepare and use Donor Mix under low-light conditions.

### Control Lysate information

Control lysates are prepared from flasks of MCF7 cells (ATCC # HTB-22) at a concentration of approximately 1 mg/mL. The controls are supplied lyophilized, and should be reconstituted in either dd H<sub>2</sub>O or MilliQ® H<sub>2</sub>O. Once reconstituted, lysates should be stored frozen in single use aliquots.

Negative Lysate: Prepared from confluent flasks of MCF7 cells, treated with a combination of 10 µM LY294002, 1 µg/mL UCN-01 and 200 µM rapamycin for 2 hours.

Positive Lysate: Prepared from confluent flasks of MCF7 cells, treated with 0.5 mg/mL insulin, for 30 minutes

## CASP9 p-Ser196 AlphaScreen® SureFire® Assay Protocols

### A. 2-Plate Assay - assay protocol for adherent cells

#### Cell Seeding

1. Seed cells (200  $\mu$ L of cells for 96 well plates, 50  $\mu$ L for 384 well plates) in tissue culture plates. Incubate at 37°C overnight in serum-containing media.

#### Cell Treatment

2. Remove culture media, and stimulate the cells with 50  $\mu$ L agonists prepared in serum-free media (25  $\mu$ L for 384-well plates). (*If testing antagonists, prior to stimulation remove culture medium and replace with 50  $\mu$ L serum-free media containing antagonists (25  $\mu$ L for 384-well plates)*). Return cells to 37°C incubator for desired time. 1 hour is often sufficient for signal transduction inhibitors, and 5 minutes for receptor agonists.

**Note:** Peptidic agonists and antagonists can often stick to plastic surfaces. To minimize this effect, dilute in serum-free media containing a suitable carrier protein (e.g. 0.1% IgG free BSA - Jackson ImmunoResearch Cat #001-000-161).

#### Lysate Preparation

5. To lyse cells, remove medium from wells, and add freshly prepared 1X Lysis Buffer (50-100  $\mu$ L for a 96 well plate, 25  $\mu$ L for a 384 well plate). Agitate on a plate shaker (~350 rpm) for 10 minutes at room temperature.

6. Take 4  $\mu$ L of the lysate and transfer to a 384-well Proxiplate™ for assay. (*Add 4  $\mu$ L Control lysates to separate wells if required*).

#### SureFire Assay

7. Add 5  $\mu$ L of Acceptor Mix to wells. Seal plate with Topseal-A adhesive film, and incubate for 2 hours at room temperature.

8. Add 2  $\mu$ L of Donor Mix to wells under subdued light. Seal plate with Topseal-A adhesive film, and cover plate with foil. Incubate for 2 hours at room temperature.

**Note:** Longer incubation may give greater sensitivity. Plates can be incubated overnight if required.

9. Read plate on an Alpha Technology-compatible plate reader, using standard AlphaScreen settings.

**B. 1 Plate Assay - assay protocol for non-adherent cells, and for high-throughput applications.**

**Note: the larger volumes required using this assay will result in achieving less assay points per kit.**

Cell Seeding

1. Harvest cells by centrifugation, and re-suspend cells in HBSS at a suitable cell density. We recommend  $10^7$  cells/mL as a starting point. Seed 4  $\mu$ L of cells/well into a 384-well culture plate.
2. If using test agents/inhibitors, add 2  $\mu$ L/well of 4X inhibitors prepared in HBSS.

**Note:** Peptidic agonists and antagonists can often stick to plastic surfaces. To minimize this effect, dilute in serum-free media containing a suitable carrier protein (e.g. 0.1% IgG free BSA - Jackson Immunoresearch Cat #001-000-161).

3. Return cells to incubator at 37°C for 1-2 hours.

Cell Treatment

4. Stimulate cells with agonists by addition of 2  $\mu$ L/well of 4X agonist stock in HBSS containing 0.1% BSA. The final volume in the wells should be 8  $\mu$ L. (if no antagonists were used in step 2, stimulate the cells with 4  $\mu$ L/well of 2X agonist, to give a final volume in the wells of 8  $\mu$ L.)

Lysate Preparation

5. To lyse the cells, add 2  $\mu$ L/well 5X Lysis buffer. (Add 10  $\mu$ L control lysates to separate wells if required)

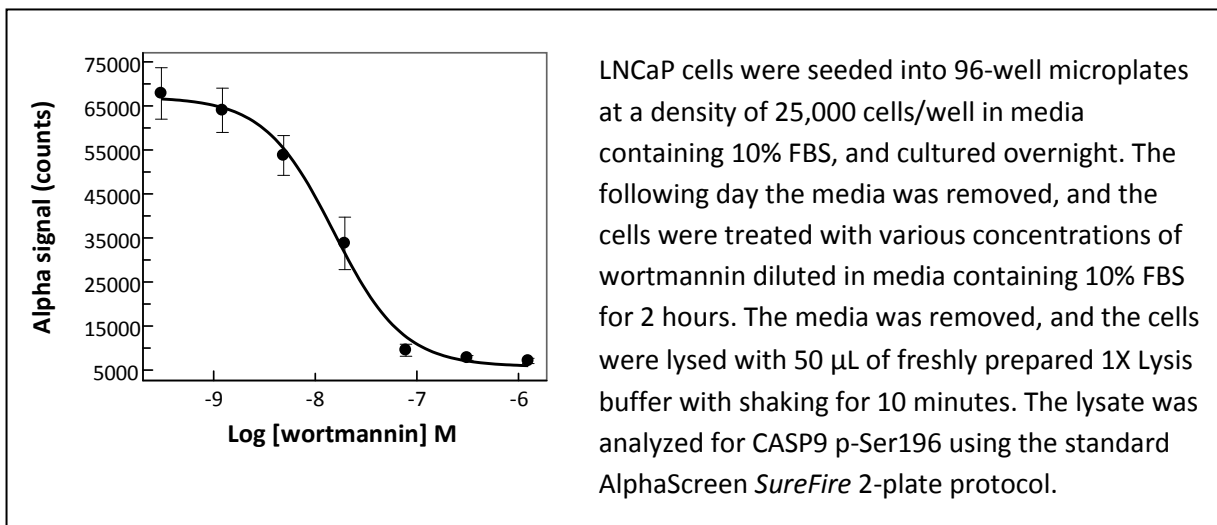
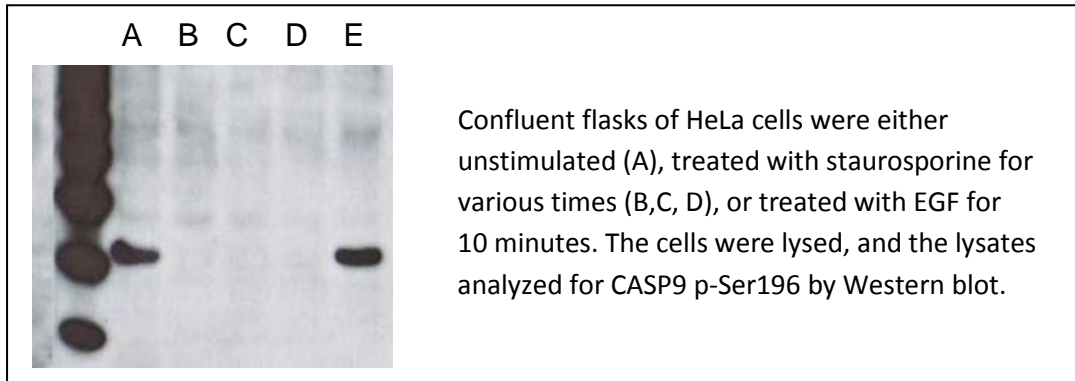
SureFire Assay

6. Add 8  $\mu$ L of Acceptor Mix to wells. Seal plate with Topseal-A adhesive film, and incubate for 2 hours at room temperature.
7. Add 3  $\mu$ L of Donor Mix to wells under subdued light. Seal plate with Topseal-A adhesive film, and cover plate with foil. Incubate for 2 hours at room temperature.

**Note:** Longer incubation may give greater sensitivity. Plates can be incubated overnight if required.

8. Read plate on an Alpha Technology-compatible plate reader, using standard AlphaScreen settings.

## Representative Data



## Frequently Asked Questions & Troubleshooting

For comprehensive information on assay optimization and troubleshooting, please refer to the following resources:

- Guide to AlphaScreen® *SureFire*® assay optimization
- AlphaScreen® *SureFire*® user guide

To download these resources, and other related technical information, visit

<http://www.perkinelmer.com/category/alpha-surefire-kits>

For general information on AlphaScreen® *SureFire*® assays, visit <http://www.tgrbio.com>

## Customer Care

To contact the customer care team, please visit [www.perkinelmer.com/ServiceCall](http://www.perkinelmer.com/ServiceCall)

**For more information regarding related AlphaScreen® SureFire® products and protocols refer to:**

**PerkinElmer web site: [www.perkinelmer.com](http://www.perkinelmer.com)**

**TGR BioSciences website: [www.tgrbio.com](http://www.tgrbio.com)**

**FOR RESEARCH USE ONLY. NOT FOR USE IN DIAGNOSTIC PROCEDURES.**

**This product is not for resale or distribution except by authorized distributors.**

**LIMITED WARRANTY:** PerkinElmer, Inc. warrants that, at the time of shipment, the products sold by it are free from defects in material and workmanship and conform to specifications which accompany the product. PerkinElmer Inc. makes no other warranty, express or implied with respect to the products, including any warranty of merchantability or fitness for any particular purpose. Notification of any breach of warranty must be made within 60 days of receipt unless provided in writing by PerkinElmer Inc. No claim shall be honored if the customer fails to notify PerkinElmer Inc. within the period specified. The sole and exclusive remedy of the customer for any liability of PerkinElmer Inc. of any kind including liability based upon warranty (express or implied whether contained herein or elsewhere), strict liability contract or otherwise is limited to the replacement of the goods or the refunds of the invoice price of goods. PerkinElmer Inc. shall not in any case be liable for special, incidental or consequential damages of any kind.