

Research Use Only. Not for use in diagnostic procedures.

V-domain Ig suppressor of T cell activation/ B7-H5/PD-1H (VISTA) AlphaLISA Detection Kit

Product No.: AL3059

Contents

Product Information	2
Quality Control	2
Analyte of Interest	3
Description of the AlphaLISA Assay	3
Precautions	3
Kit Content: Reagents and Materials	4
Recommendations	5
Assay Procedure	5
Data Analysis	8
Assay Performance Characteristics	9
Human Serum Experiments	10
Cell Lysate Experiments	12
Troubleshooting Guide	13

Product Information

Application:	This kit is designed for the quantitative determination of Human VISTA in serum, cell lysates and cell culture media using a homogeneous AlphaLISA assay (no wash steps).
Sensitivity:	Lower Detection Limit (LDL): 14.2 pg/mL Lower Limit of Quantification (LLOQ): 56.6 pg/mL EC ₅₀ : 8.0 ng/mL
Dynamic range:	14.2 – 100 000 pg/mL

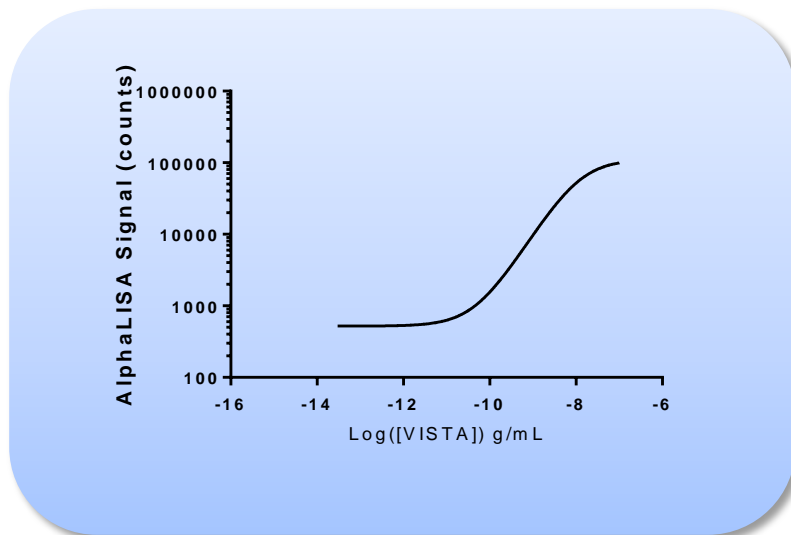


Figure 1. Typical sensitivity curve in AlphaLISA Immunoassay Buffer. The data was generated using a white Optiplate™-384 microplate and the EnVision® Multilabel Plate Reader 2103 with Alpha option.

Storage:	Store kit in the dark at +4 °C. For reconstituted analyte aliquot and store at -20 °C. Avoid freeze-thaw cycles.
Stability:	This kit is stable for at least 6 months from the manufacturing date when stored in its original packaging and the recommended storage conditions.

Quality Control

Lot to lot consistency is confirmed in an AlphaLISA assay. Maximum and minimum signals, EC₅₀ and LDL were measured on the EnVision Multilabel Plate Reader with Alpha option using the protocol described in this technical data sheet. We certify that these results meet our quality release criteria. Maximum counts may vary between bead lots and the instrument used, with no impact on LDL measurement.

Analyte of Interest

V-domain Ig suppressor of T cell activation (VISTA), also known as B7-H5 and PD-1H, is a transmembrane protein that functions as an immune checkpoint. VISTA is primarily expressed in white blood cells and can act either as a ligand or receptor on T-cells. Its main function is to inhibit T cell effector function and maintain peripheral tolerance. VISTA is upregulated in tumor-infiltrating lymphocytes and blocking it with an antibody has proven to stunt tumor growth in mouse melanoma models. HIV-infected individuals also display increased VISTA levels in monocytes.

Description of the AlphaLISA Assay

AlphaLISA technology allows the detection of molecules of interest in buffer, cell culture media, serum and plasma in a highly sensitive, quantitative, reproducible and user-friendly mode. In an AlphaLISA assay, a Biotinylated Anti-Analyte Antibody binds to the Streptavidin-coated Alpha Donor beads, while another Anti-Analyte Antibody is conjugated to AlphaLISA Acceptor beads. In the presence of the analyte, the beads come into close proximity. The excitation of the Donor beads provokes the release of singlet oxygen molecules that triggers a cascade of energy transfer in the Acceptor beads, resulting in a sharp peak of light emission at 615 nm (Figure 2).

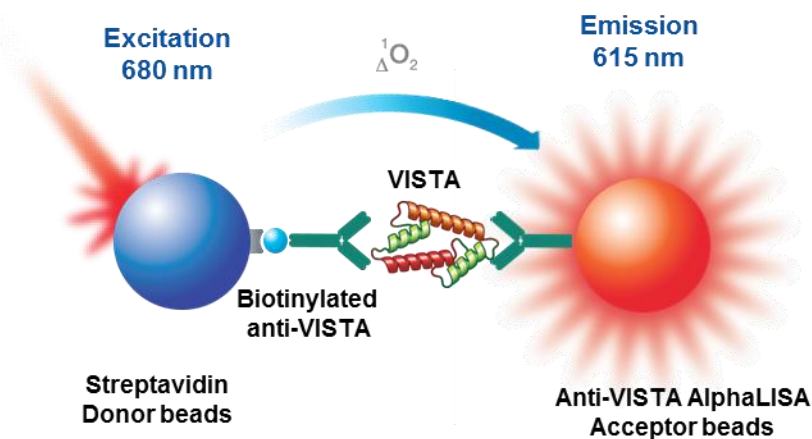


Figure 2. AlphaLISA Assay Principle.

Precautions

- The Alpha Donor beads are light-sensitive. All the other assay reagents can be used under normal light conditions. All Alpha assays using the Donor beads should be performed under subdued laboratory lighting (< 100 lux). Green filters (LEE 090 filters (preferred) or Roscolux filters #389 from Rosco) can be applied to light fixtures.
- Take precautionary measures to avoid contamination of the reagent solutions.
- The Biotinylated Anti-Analyte Antibody contains sodium azide. Contact with skin or inhalation should be avoided.

Kit Content: Reagents and Materials

Kit components	AL3059HV (100 assay points ^{***})	AL3059C (500 assay points ^{***})	AL3059F (5000 assay points ^{***})
AlphaLISA Anti-VISTA Acceptor beads stored in PBS, 0.05% Proclin-300, pH 7.2	20 µL @ 5 mg/mL (1 brown tube, <u>white</u> cap)	50 µL @ 5 mg/mL (1 brown tube, <u>white</u> cap)	500 µL @ 5 mg/mL (1 brown tube, <u>white</u> cap)
Streptavidin (SA)-coated Donor beads stored in 25 mM HEPES, 100 mM NaCl, 0.05% Proclin-300, pH 7.4	80 µL @ 5 mg/mL (1 brown tube, <u>black</u> cap)	200 µL @ 5 mg/mL (1 brown tube, <u>black</u> cap)	2 x 1 mL @ 5 mg/mL (2 brown tubes, <u>black</u> caps)
Biotinylated Anti-VISTA Antibody stored in PBS, 0.1% Tween-20, 0.05% NaN ₃ , pH 7.4	20 µL @ 500 nM (1 tube, <u>black</u> cap)	50 µL @ 500 nM (1 tube, <u>black</u> cap)	500 µL @ 500 nM (1 tube, <u>black</u> cap)
Lyophilized Human VISTA*	0.3 µg (1 tube, <u>clear</u> cap)	0.3 µg (1 tube, <u>clear</u> cap)	0.3 µg (1 tube, <u>clear</u> cap)
AlphaLISA Immunoassay Buffer (10X)**	2 mL, 1 small bottle	10 mL, 1 medium bottle	100 mL, 1 large bottle

* Reconstitute lyophilized analyte in 100 µL Milli-Q[®] grade H₂O. The reconstituted analyte should be used within 60 minutes or aliquoted into screw-capped polypropylene vials and stored at -20°C for future experiments. Avoid freeze-thaw cycles. One vial contains an amount of analyte sufficient for performing 10 standard curves. Additional vials can be ordered separately (cat # AL3059S).

** Extra buffer can be ordered separately (cat # AL000C: 10 mL, cat # AL000F: 100 mL).

*** The number of assay points is based on an assay volume of 100 µL in 96-well plates or 50 µL in 96- or 384-well assay plates using the kit components at the recommended concentrations.

Sodium azide should **not** be added to the stock reagents. High concentrations of sodium azide (> 0.001 % final in the assay) might decrease the AlphaLISA signal. Note that sodium azide from the Biotinylated Antibody stock solution will not interfere with the AlphaLISA signal (0.0001% final in the assay).

Specific additional required reagents and materials:

The following materials are recommended:

Item	Suggested source	Catalog #
TopSeal™-A Plus Adhesive Sealing Film	PerkinElmer Inc.	6050185
EnVision®-Alpha Reader	PerkinElmer Inc.	-

Recommendations

- The volume indicated on each tube is guaranteed for single pipetting. Multiple pipetting of the reagents may reduce the theoretical amount left in the tube. To minimize loss when pipetting beads, it is preferable not to pre-wet the tip.
- Centrifuge all tubes (including lyophilized analyte) before use to improve recovery of content (2000g, 10-15 sec). Re-suspend all reagents by vortexing before use.
- Use Milli-Q® grade H₂O (18 MΩ·cm) to dilute 10X AlphaLISA Immunoassay Buffer and to reconstitute the lyophilized analyte.
- When diluting the standard or samples, change tips between each standard or sample dilution. When loading reagents in the assay microplate, change tips between each standard or sample addition and after each set of reagents.
- When reagents are added to the microplate, make sure the liquids are at the bottom of the well.
- Small volumes may be prone to evaporation. It is recommended to cover microplates with TopSeal-A Adhesive Sealing Films to reduce evaporation during incubation. Microplates can be read with the TopSeal-A Film.
- The AlphaLISA signal is detected with an EnVision Multilabel Reader equipped with the Alpha option using the AlphaScreen standard settings (e.g. Total Measurement Time: 550 ms, Laser 680 nm Excitation Time: 180 ms, Mirror: D640as, Emission Filter: M570w, Center Wavelength 570 nm, Bandwidth 100 nm, Transmittance 75%).
- AlphaLISA signal will vary with temperature and incubation time. For consistent results, identical incubation times and temperature should be used for each plate.
- The standard curves shown in this technical data sheet are provided for information only. A standard curve must be generated for each experiment.

Assay Procedure

IMPORTANT: PLEASE READ THE RECOMMENDATIONS BELOW BEFORE USE

- The protocol described below is an example for generating one standard curve in a 50 µL final assay volume (48 wells, triplicate determinations). The protocols also include testing samples in 452 wells. If a different amount of samples are tested, the volumes of all reagents have to be adjusted accordingly, as shown in the table below. These calculations do not include excess reagent to account for losses during transfer of solutions or dead volumes.
- The standard dilution protocol is provided for information only. As needed, the number of replicates or the range of concentrations covered can be modified.
- Use of four background points in triplicate (12 wells) is recommended when LDL/LLOQ is calculated. One background point in triplicate (3 wells) can be used when LDL/LLOQ is not calculated.

Format	# of data points	Final	Volume				Plate recommendation
			Sample	AlphaLISA Acceptor beads	Biotinylated Antibody	SA-Donor beads	
AL3059HV	100	100 µL	10 µL	20 µL	20 µL	50 µL	White OptiPlate-96 (cat # 6005290) White ½ AreaPlate-96 (cat # 6005560)
AL3059C	250	100 µL	10 µL	20 µL	20 µL	50 µL	White OptiPlate-96 (cat # 6005290) White ½ AreaPlate-96 (cat # 6005560)
	500	50 µL	5 µL	10 µL	10 µL	25 µL	White ½ AreaPlate-96 (cat # 6005560) White OptiPlate-384 (cat # 6007290) Light gray AlphaPlate™-384 (cat # 6005350)
	1 250	20 µL	2 µL	4 µL	4 µL	10 µL	Light gray AlphaPlate-384 (cat # 6005350) ProxiPlate™-384 Plus (cat # 6008280) White OptiPlate-384 (cat # 6007290)
	2 500	10 µL	1 µL	2 µL	2 µL	5 µL	Light gray AlphaPlate-1536 (cat # 6004350)
AL3059F	5 000	50 µL	5 µL	10 µL	10 µL	25 µL	White ½ AreaPlate-96 (cat # 6005560) White OptiPlate-384 (cat # 6007290) Light gray AlphaPlate-384 (cat # 6005350)
	12 500	20 µL	2 µL	4 µL	4 µL	10 µL	Light gray AlphaPlate-384 (cat # 6005350) ProxiPlate-384 Plus (cat # 6008280) White OptiPlate-384 (cat # 6007290)
	25 000	10 µL	1 µL	2 µL	2 µL	5 µL	Light gray AlphaPlate-1536 (cat # 6004350)

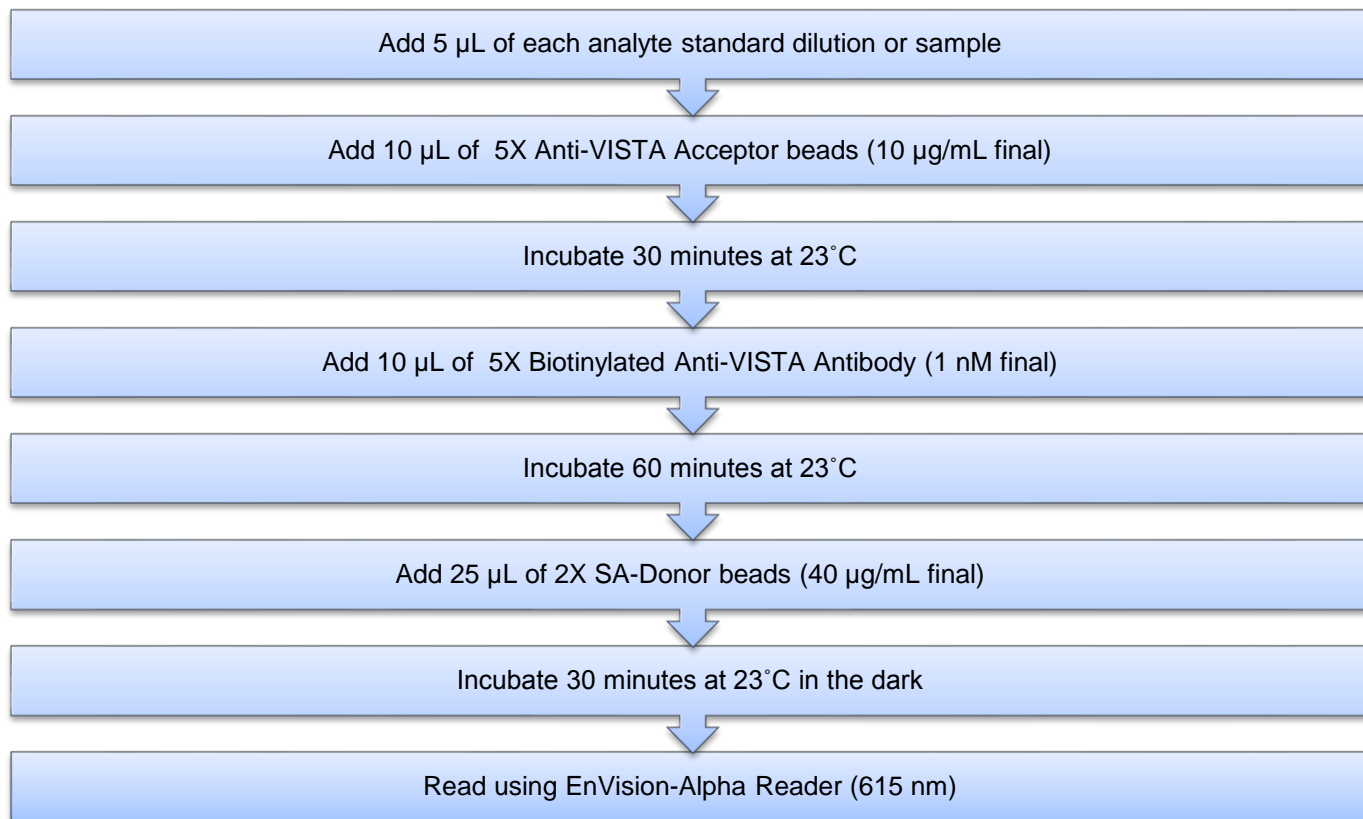
3 Step Protocol described below is for 500 assay points including one standard curve (48 wells) and samples (452 wells). If a different amount of samples are tested, the volumes of all reagents have to be adjusted accordingly.

- 1) Preparation of 1X AlphaLISA Immunoassay Buffer:
Add 5 mL of 10X AlphaLISA Immunoassay Buffer to 45 mL Milli-Q[®] grade H₂O.
- 2) Preparation of VISTA analyte standard dilutions:
 - a. Reconstitute lyophilized VISTA (0.3 µg) in 100 µL Milli-Q[®] grade H₂O.
 - b. Prepare standard dilutions as follows in 1X AlphaLISA Immunoassay Buffer (change tip between each standard dilution):

Tube	Vol. of VISTA (µL)	Vol. of diluent (µL) *	[VISTA] in standard curve	
			(g/mL in 5 µL)	(pg/mL in 5 µL)
A	10 µL of reconstituted VISTA	90	3.00E-07	300 000
B	60 µL of tube A	120	1.00E-07	100 000
C	60 µL of tube B	140	3.00E-08	30 000
D	60 µL of tube C	120	1.00E-08	10 000
E	60 µL of tube D	140	3.00E-09	3 000
F	60 µL of tube E	120	1.00E-09	1 000
G	60 µL of tube F	140	3.00E-10	300
H	60 µL of tube G	120	1.00E-10	100
I	60 µL of tube H	140	3.00E-11	30
J	60 µL of tube I	120	1.00E-11	10
K	60 µL of tube J	140	3.00E-12	3
L	60 µL of tube K	120	1.00E-12	1
M ** (background)	0	100	0	0
N ** (background)	0	100	0	0
O ** (background)	0	100	0	0
P ** (background)	0	100	0	0

- * Dilute standards in diluent (e.g. 1X AlphaLISA Immunoassay Buffer).
At low concentrations of analyte, a significant amount of analyte can bind to the vial. Therefore, load the analyte standard dilutions in the assay microplate within 60 minutes of preparation.
- ** Four background points in triplicate (12 wells) are used when LDL is calculated. If LDL does not need to be calculated, one background point in triplicate can be used (3 wells).

- 3) Preparation of 5X AlphaLISA Anti-VISTA Acceptor beads (50 µg/mL):
 - a. Prepare just before use.
 - b. Add 50 µL of 5 mg/mL AlphaLISA Anti-VISTA Acceptor to 4950 µL of 1X AlphaLISA Immunoassay Buffer.
- 4) Preparation of 5X Biotinylated Anti-VISTA Antibody (5 nM):
 - a. Prepare just before use.
 - b. Add 50 µL of 500 nM Biotinylated Anti-VISTA Antibody to 4950 µL of 1X AlphaLISA Immunoassay Buffer.
- 5) Preparation of 2X Streptavidin (SA) Donor beads (80 µg/mL):
 - a. Prepare just before use.
 - b. Keep the beads under subdued laboratory lighting.
 - c. Add 200 µL of 5 mg/mL SA-Donor beads to 12 300 µL of 1X AlphaLISA Immunoassay Buffer.
- 6) In a white Optiplate (384 wells):



Data Analysis

- Calculate the average count value for the background wells.
- Generate a standard curve by plotting the AlphaLISA counts versus the concentration of analyte. A log scale can be used for either or both axes. No additional data transformation is required.
- Analyze data according to a nonlinear regression using the 4-parameter logistic equation (sigmoidal dose-response curve with variable slope) and a $1/Y^2$ data weighting (the values at maximal concentrations of analyte after the hook point should be removed for correct analysis).
- The LDL is calculated by interpolating the average background counts (12 wells without analyte) + 3 x standard deviation value (average background counts + (3xSD)) on the standard curve.
- The LLOQ as measured here is calculated by interpolating the average background counts (12 wells without analyte) + 10 x standard deviation value (average background counts + (10xSD)) on the standard curve. Alternatively, the true LLOQ can be determined by spiking known concentrations of analyte in the matrix and measuring the percent recovery, and then determining the minimal amount of spiked analyte that can be quantified within a given limit (usually +/- 20% or 30% of the real concentration).
- Read from the standard curve the concentration of analyte contained in the samples.
- If samples have been diluted, the concentration read from the standard curve must be multiplied by the dilution factor.

Assay Performance Characteristics

AlphaLISA assay performance described below was determined using the 3 step protocol using AlphaLISA Immunoassay Buffer (IAB) as assay buffer. The analytes (standards) were prepared in IAB, DMEM + 10% FBS, RPMI +10% FBS, 100% FBS or RIPA Buffer, and all other components were prepared in IAB.

- Assay Sensitivity:

The LDL was calculated as described above. The values correspond to the lowest concentration of analyte that can be detected in a volume of 5 μ L sample using the recommended assay conditions.

LDL (pg/mL)	(Analyte diluent)	# of experiments
14	IAB	9
25	DMEM + 10% FBS	6
199	RPMI + 10% FBS**	6
21	100% FBS	6
18	RIPA Buffer	6

* Note that LDL can be decreased (i.e. sensitivity increased) by increasing the volume of analyte in the assay (e.g. use 10 μ L of analyte in a final assay volume of 50 μ L).

** Assay Performance is severely affected by RPMI. Use is not recommended

- Assay Precision:

The following assay precision data were calculated from the three independent assays using two different kit lots. In each lot, the analytes were prepared in IAB, DMEM+10%FBS, 100%FBS or RIPA Buffer. All other components were prepared in IAB. Each assay consisted of one standard curve comprising 12 data points (each in triplicate) and 12 background wells (no analytes). The assays were performed in 384-well format.

- Intra-assay precision:

The intra-assay precision was determined using a total of 16 independent determinations in triplicate. Shown as CV%.

VISTA	IAB	DMEM+ 10% FBS	100% FBS	RIPA Buffer
CV (%)	5	6	7	6

- Inter-assay precision:

The inter-assay precision was determined using a total of 3 independent determinations with 9 measurements for 3 ng/mL sample. Shown as CV%.

VISTA	IAB	DMEM+ 10% FBS	100% FBS	RIPA Buffer
CV (%)	9	8	10	7

- Spike Recovery:

Three known concentrations of analyte were spiked into IAB, DMEM +10% FBS, 100%FBS, or RIPA Buffer.. All samples, including non-spiked diluents were measured in the assay. Note that the analytes for the respective standard curves were prepared in IAB, DMEM + 10% FBS, 100% FBS, or RIPA Buffer. All other assay components were diluted in IAB.

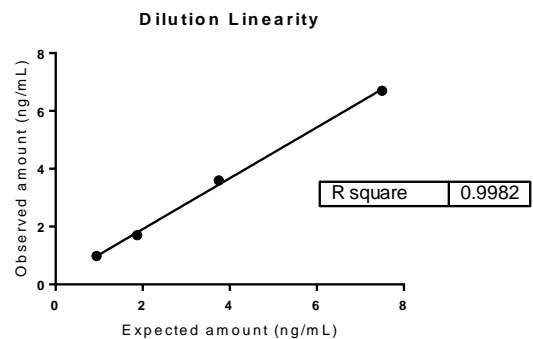
Spiked VISTA (ng/mL)	% Recovery			
	IAB	DMEM+ 10% FBS	100% FBS	RIPA Buffer
10	95	98	106	105
1	101	96	108	99
0.1	107	105	99	101

Human Serum Experiments

- Dilution Linearity

Neat Normal Human Serum and VISTA-spiked (30 ng/mL) normal Human Serum samples were diluted with 100% FBS and the assay was performed along with a standard curve using the analyte prepared in 100% FBS. Concentrations of VISTA in diluted human serum were determined by interpolating to the standard curve. Excellent dilution linearity ($R^2 = 0.998$) was achieved in the VISTA-spiked human serum samples that was diluted ≥ 4 fold. The results are shown in table and figure below.

Dilution Factor (x)	Expected VISTA (ng/mL)	Observed VISTA (ng/mL)
1	30	78
2	15	30
4	7.5	6.7
8	3.75	3.6
16	1.875	1.7
32	0.938	0.98



- Spike Recovery

Three known amounts of VISTA were spiked into Normal Human Serum (10, 3, and 1 ng/mL VISTA in spiked samples) and then the samples were diluted 4-fold into 100% FBS. The standard was prepared in FBS and all other reagents were prepared in IAB. The spike recoveries of VISTA were determined and the results are shown in table below. *Recoveries were calculated after the endogenous VISTA level was subtracted (in this case, 15.2 ng/mL in Normal Human Serum). Excellent recovery was achieved for all three spikes tested.

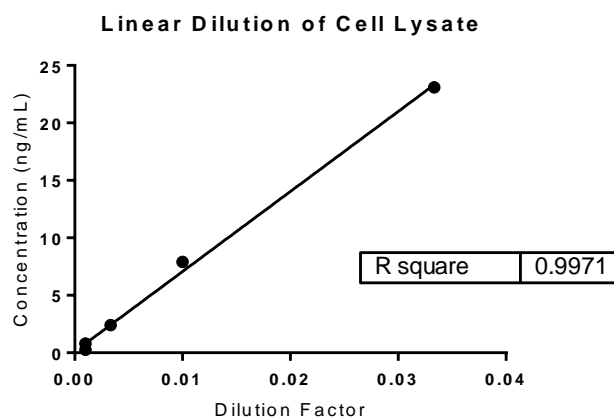
	Diluent: 100%FBS	
	Spiked sample (Normal Human Serum)	
Spike (ng/mL)	Concentration (ng/mL)*	Recovery (%)
No spike	15.2	N/A
10	9.6	96
3	2.8	93
1	1.1	110

Cell Lysate Experiments

- Dilution Linearity

To validate the assay kit, commercially available cell lysate samples with unknown concentrations of VISTA were tested. The cell lysates include VISTA positive and negative samples. The standard was prepared in the RIPA and lysate samples were diluted with RIPA. All other reagents were prepared in IAB. VISTA was not detected in negative samples. In the positive samples, an average of 760 ng/mL VISTA was detected and excellent dilution linearity ($R^2 = 0.997$) was achieved when lysate was diluted ≥ 30 fold. The results are summarized from 3 experiments and shown in table and figure below.

Cell Lysate Dilution Factors (DF)	VISTA detected in Positive Cell Lysate (ng/mL)	VISTA Positive Cell Lysate (ng/mL x DF)	VISTA Negative Cell Lysate (ng/mL)*
30	23.1	693	0
100	7.9	790	0
300	2.4	720	0
1000	0.8	800	0
3000	0.25	750	0
Average \pm SD	N/A	760.5 \pm 47	0



* Counts for negative cell lysate (regardless of dilution) sample are below or equal to the background counts (RIPA buffer only).

Troubleshooting Guide

You will find detailed recommendations for common situations you might encounter with your AlphaLISA Assay kit at:

<http://www.perkinelmer.com/lab-products-and-services/application-support-knowledgebase/alphalisa-alphascreen-no-wash-assays/alpha-troubleshooting.html>

FOR RESEARCH USE ONLY. NOT FOR USE IN DIAGNOSTIC PROCEDURES.

This product is not for resale or distribution except by authorized distributors.

LIMITED WARRANTY: PerkinElmer BioSignal Inc. warrants that, at the time of shipment, the products sold by it are free from defects in material and workmanship and conform to specifications which accompany the product. PerkinElmer BioSignal Inc. makes no other warranty, express or implied with respect to the products, including any warranty of merchantability or fitness for any particular purpose. Notification of any breach of warranty must be made within 60 days of receipt unless otherwise provided in writing by PerkinElmer BioSignal Inc. No claim shall be honored if the customer fails to notify PerkinElmer BioSignal Inc. within the period specified. The sole and exclusive remedy of the customer for any liability of PerkinElmer BioSignal Inc. of any kind including liability based upon warranty (express or implied whether contained herein or elsewhere), strict liability contract or otherwise is limited to the replacement of the goods or the refunds of the invoice price of goods. PerkinElmer BioSignal Inc. shall not in any case be liable for special, incidental or consequential damages of any kind.

PerkinElmer, Inc.
940 Winter Street
Waltham, MA 02451 USA
P: (800) 762-4000 or
(+1) 203-925-4602
www.perkinelmer.com



For a complete listing of our global offices, visit www.perkinelmer.com/ContactUs

Copyright © 2012, PerkinElmer, Inc. All rights reserved. PerkinElmer® is a registered trademark of PerkinElmer, Inc. All other trademarks are the property of their respective owners.