

Research Use Only. Not for use in diagnostic procedures.

Hepatitis B virus e antigen (HBeAg) AlphaLISA Detection Kit

Product No.: AL3082 HV/C/F

Contents

Product Information	2
Quality Control.....	2
Analyte of Interest	3
Description of the AlphaLISA Assay	3
Precautions	3
Kit Content: Reagents and Materials	4
Recommendations	5
Assay Procedure.....	5
Data Analysis	8
Assay Performance Characteristics	9
Troubleshooting Guide.....	11

Product Information

Application:	This kit is designed for the quantitative determination of Hepatitis B virus e antigen (HBeAg) in, immuno assay buffer and cell culture media using a homogeneous AlphaLISA assay (no wash steps).
Sensitivity:	Lower Detection Limit (LDL): 38 pg/mL Lower Limit of Quantification (LLOQ): 132 pg/mL EC ₅₀ : 1.05 µg/mL
Dynamic range:	38 – 10 000 000 pg/mL

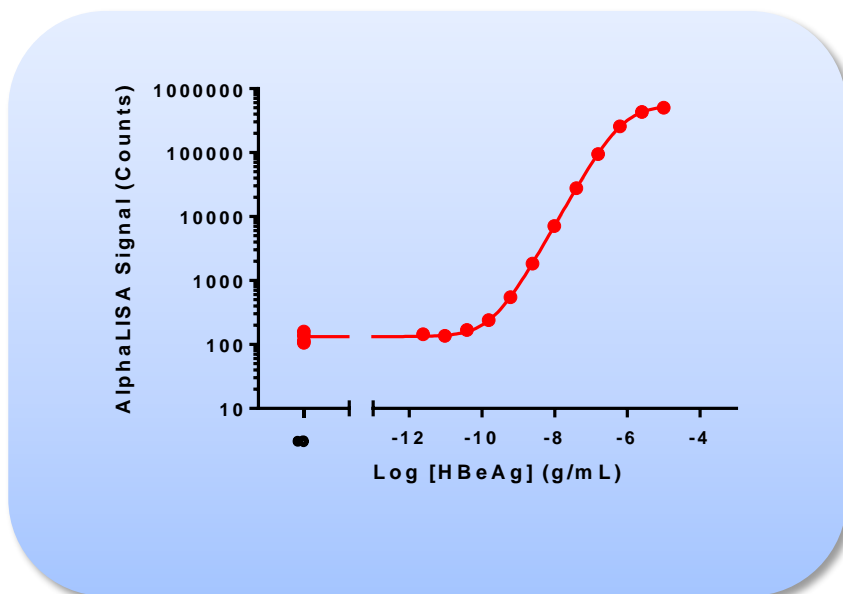


Figure 1. Typical sensitivity curve in AlphaLISA Immunoassay Buffer. The data was generated using a white Optiplate™-384 microplate and the EnVision® Multilabel Plate Reader 2103 with Alpha option.

Storage:	Store kit in the dark at 4 °C. For reconstituted analyte aliquot and store at -20 °C. Avoid freeze-thaw cycles.
Stability:	This kit is stable for at least 6 months from the manufacturing date when stored in its original packaging and the recommended storage conditions.

Quality Control

Lot to lot consistency is confirmed in an AlphaLISA assay. Maximum and minimum signals, EC₅₀ and LDL were measured on the EnVision Multilabel Plate Reader with Alpha option using the protocol described in this technical data sheet. We certify that these results meet our quality release criteria. Maximum counts may vary between bead lots and the instrument used, with no impact on LDL measurement.

Analyte of Interest

Hepatitis B e-antigen (HBeAg) is a protein from Hepatitis B virus (HBV). HBV circulates in infected blood when the virus is actively replicating. Infection with HBV induces a spectrum of clinical manifestations and chronic liver diseases. HBeAg can be found between the icosahedral nucleocapsid core (HBcAg) and the lipid envelope containing HBsAg. HBeAg is secreted and accumulates as an immunologically distinct soluble antigen. Hence the presence of HBeAg can serve as a marker of viral replication.

Description of the AlphaLISA Assay

AlphaLISA technology allows the detection of molecules of interest in buffer, cell culture media, serum and plasma in a highly sensitive, quantitative, reproducible and user-friendly mode. In this AlphaLISA assay, a Biotinylated Anti-HBeAg Antibody binds to the Streptavidin-coated Alpha Donor beads, while another Anti-HBeAg Antibody is conjugated to AlphaLISA Acceptor beads. In the presence of the HBeAg, the beads come into close proximity. The excitation of the Donor beads provokes the release of singlet oxygen molecules that triggers a cascade of energy transfer in the Acceptor beads, resulting in a sharp peak of light emission at 615 nm (Figure 2).

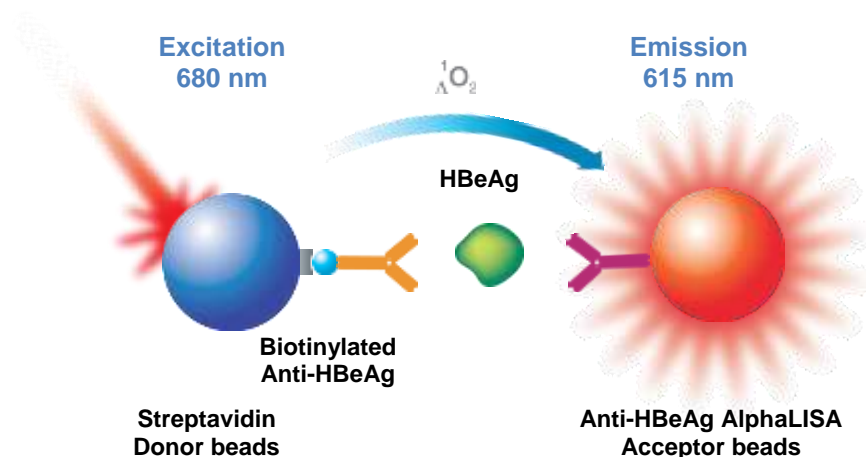


Figure 2. AlphaLISA Assay Principle.

Precautions

- The Alpha Donor beads are light-sensitive. All the other assay reagents can be used under normal light conditions. All Alpha assays using the Donor beads should be performed under subdued laboratory lighting (< 100 lux). Green filters (LEE 090 filters (preferred) or Roscolux filters #389 from Rosco) can be applied to light fixtures.
- Take precautionary measures to avoid contamination of the reagent solutions.
- The Biotinylated Anti-Analyte Antibody contains sodium azide. Contact with skin or inhalation should be avoided.

Kit Content: Reagents and Materials

Kit components	AL3082HV (100 assay points ^{***})	AL3082C (500 assay points ^{***})	AL3082F (5000 assay points ^{***})
AlphaLISA Anti-HBeAg Acceptor beads stored in PBS, 0.05% Proclin-300, pH 7.2	20 µL @ 5 mg/mL (1 brown tube, <u>white</u> cap)	50 µL @ 5 mg/mL (1 brown tube, <u>white</u> cap)	500 µL @ 5 mg/mL (1 brown tube, <u>white</u> cap)
Streptavidin (SA)-coated Donor beads stored in 25 mM HEPES, 100 mM NaCl, 0.05% Proclin-300, pH 7.4	40 µL @ 5 mg/mL (1 brown tube, <u>black</u> cap)	100 µL @ 5 mg/mL (1 brown tube, <u>black</u> cap)	1 mL @ 5 mg/mL (brown tube, <u>black</u> cap)
Biotinylated Anti-HBeAg Antibody stored in PBS, 0.1% Tween-20, 0.05% NaN ₃ , pH 7.4	20 µL @ 500 nM (1 tube, <u>black</u> cap)	50 µL @ 500 nM (1 tube, <u>black</u> cap)	500 µL @ 500 nM (1 tube, <u>black</u> cap)
Lyophilized Recombinant HBeAg Antigen*	10 µg (1 tube, <u>clear</u> cap)	10 µg (1 tube, <u>clear</u> cap)	10 µg (1 tube, <u>clear</u> cap)
AlphaLISA Immunoassay Buffer (10X)**	2 mL, 1 small bottle	10 mL, 1 small bottle	100 mL, 1 large bottle

* Reconstitute lyophilized analyte in 100 µL Milli-Q[®] grade H₂O. The reconstituted analyte should be used within 60 minutes or aliquoted into screw-capped polypropylene vials and stored at -20 °C for future experiments. Avoid freeze-thaw cycles. One vial contains an amount of analyte sufficient for performing 10 standard curves. Additional vials can be ordered separately (cat # AL3082S).

** Extra buffer can be ordered separately (cat # AL000C: 10 mL, cat # AL000F: 100 mL).

*** The number of assay points is based on an assay volume of 100 µL in 96-well plates or 50 µL in 96- or 384-well assay plates using the kit components at the recommended concentrations.

Sodium azide should **not** be added to the stock reagents. High concentrations of sodium azide (> 0.001 % final in the assay) might decrease the AlphaLISA signal. Note that sodium azide from the Biotinylated Antibody stock solution will not interfere with the AlphaLISA signal (0.0001% final in the assay).

Specific additional required reagents and materials:

The following materials are recommended:

Item	Suggested source	Catalog #
TopSeal™-A Plus Adhesive Sealing Film	PerkinElmer Inc.	6050185
EnVision®-Alpha Reader	PerkinElmer Inc.	-

Recommendations

IMPORTANT: PLEASE READ THE RECOMMENDATIONS BELOW BEFORE USE

- The volume indicated on each tube is guaranteed for single pipetting. Multiple pipetting of the reagents may reduce the theoretical amount left in the tube. To minimize loss when pipetting beads, it is preferable not to pre-wet the tip.
- Centrifuge all tubes (including lyophilized analyte) before use to improve recovery of content (2000g, 10-15 sec). Re-suspend all reagents by vortexing before use.
- Use Milli-Q® grade H₂O to dilute 10X AlphaLISA Immunoassay Buffer and to reconstitute the lyophilized analyte.
- When diluting the standard or samples, change tips between each standard or sample dilution. When loading reagents in the assay microplate, change tips between each standard or sample addition and after each set of reagents.
- When reagents are added to the microplate, spin the plate at 1 000 rpm for 30 seconds and make sure the liquids are at the bottom of the well.
- Small volumes may be prone to evaporation. It is recommended to cover microplates with TopSeal-A Plus Adhesive Sealing Films to reduce evaporation during incubation. Microplates can be read with the TopSeal-A Film in place.
- The AlphaLISA signal is detected with an EnVision Multilabel Plate Reader equipped with the Alpha option using the AlphaScreen standard settings (e.g. Total Measurement Time: 550 ms, Laser 680 nm Excitation Time: 180 ms, Mirror: D640as, Emission Filter: M570w, Center Wavelength 570 nm, Bandwidth 100 nm, Transmittance 75%).
- AlphaLISA signal will vary with temperature and incubation time. For consistent results, identical incubation times and temperature should be used for each plate.
- The standard curves shown in this technical data sheet are provided for information only. A standard curve must be generated for each experiment.

Assay Procedure

- The protocol described below is an example for generating one standard curve in a 50 µL final assay volume (48 wells, triplicate determinations). The protocols also include testing samples in 452 wells. If different amount of samples are tested, the volumes of all reagents have to be adjusted accordingly, as shown in the table below. These calculations do not include excess reagent to account for losses during transfer of solutions or dead volumes.
- The standard dilution protocol is provided for information only. As needed, the number of replicates or the range of concentrations covered can be modified.
- Use of four background points in triplicate (12 wells) is recommended when LDL/LLOQ is calculated. One background point in triplicate (3 wells) can be used when LDL/LLOQ is not calculated.

Format	# of data points	Volume				Plate recommendation
		Final	Sample	MIX AlphaLISA AccBeads + biotinylated Ab	SA-Donor beads	
AL3082HV	100	100 µL	10 µL	10 µL	80 µL	White OptiPlate-96 (cat # 6005290) White ½ AreaPlate-96 (cat # 6005560)
AL3082C	250	100 µL	10 µL	10 µL	80 µL	White OptiPlate-96 (cat # 6005290) White ½ AreaPlate-96 (cat # 6005560)
	500	50 µL	5 µL	5 µL	40 µL	White ½ AreaPlate-96 (cat # 6005560) White OptiPlate-384 (cat # 6007290) Light gray AlphaPlate™-384 (cat # 6005350)
	1 250	20 µL	2 µL	2 µL	16 µL	Light gray AlphaPlate-384 (cat # 6005350) ProxiPlate™-384 Plus (cat # 6008280) White OptiPlate-384 (cat # 6007290)
	2 500	10 µL	1 µL	1 µL	8 µL	Light gray AlphaPlate-1536 (cat # 6004350)
AL3082F	5 000	50 µL	5 µL	5 µL	40 µL	White ½ AreaPlate-96 (cat # 6005560) White OptiPlate-384 (cat # 6007290) Light gray AlphaPlate-384 (cat # 6005350)
	12 500	20 µL	2 µL	2 µL	16 µL	Light gray AlphaPlate-384 (cat # 6005350) ProxiPlate-384 Plus (cat # 6008280) White OptiPlate-384 (cat # 6007290)
	25 000	10 µL	1 µL	1 µL	8 µL	Light gray AlphaPlate-1536 (cat # 6004350)

2 Step Protocol described below is for 500 assay points including one standard curve (48 wells) and samples (452 wells). If different amount of samples are tested, the volumes of all reagents have to be adjusted accordingly.

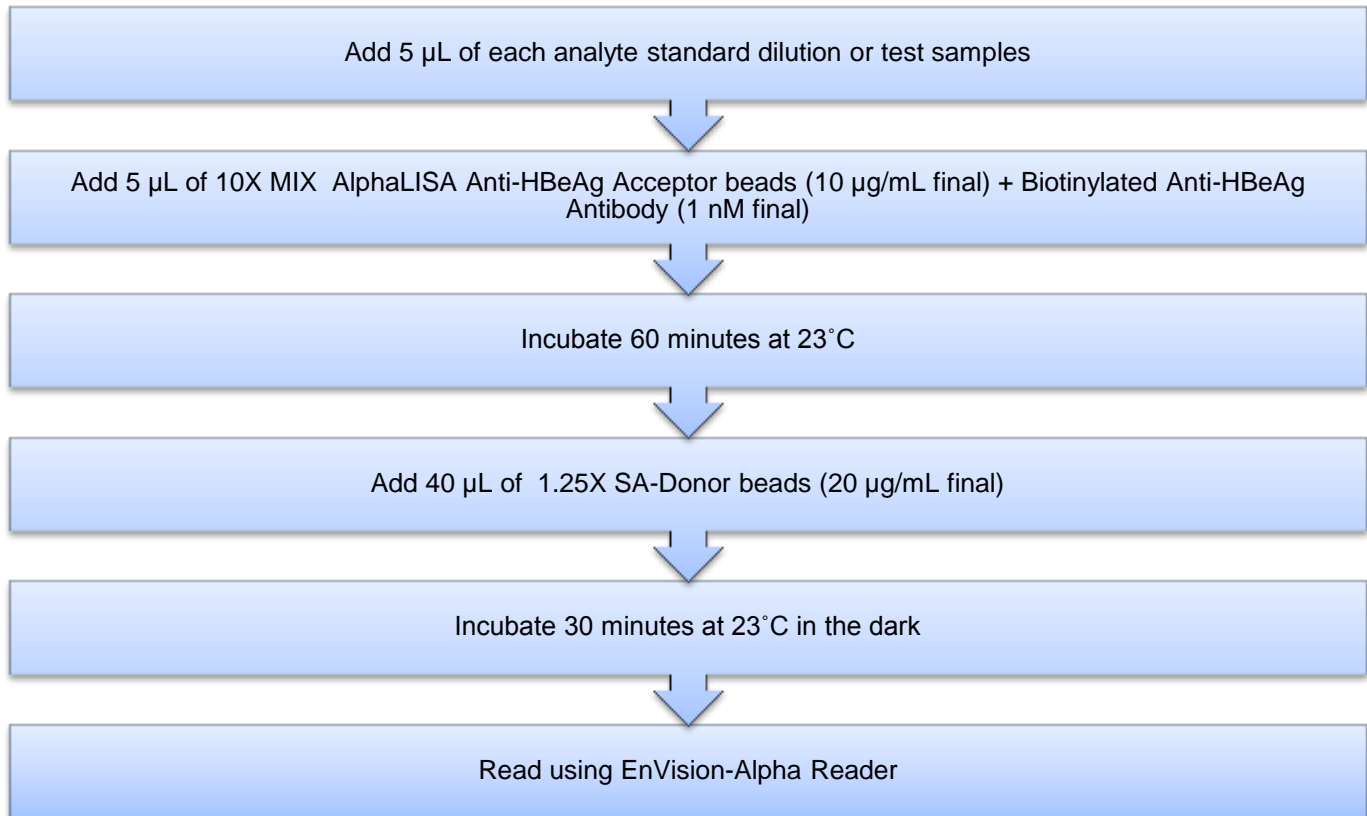
- 1) Preparation of 1X AlphaLISA Immunoassay Buffer:
Add 5 mL of 10X AlphaLISA Immunoassay Buffer to 45 mL Milli-Q[®] grade H₂O.
- 2) Preparation of HBeAg analyte standard dilutions:
 - a. Reconstitute lyophilized HBeAg (10 µg) in 100 µL Milli-Q[®] grade H₂O.
 - b. Prepare standard dilutions as follows in 1X AlphaLISA Immunoassay Buffer (change tip between each standard dilution):

Tube	Vol. of HBeAg (µL)	Vol. of diluent (µL) *	[HBeAg] in standard curve	
			(g/mL in 5 µL)	(pg/mL in 5 µL)
A	10 µL of reconstituted HBeAg	90	1.00E-05	10 000 000
B	20 µL of tube A	60	2.50E-06	2 500 000
C	20 µL of tube B	60	6.25E-07	625 000
D	20 µL of tube C	60	1.56E-07	156 250
E	20 µL of tube D	60	3.91E-08	39 063
F	20 µL of tube E	60	9.77E-09	9 766
G	20 µL of tube F	60	2.44E-09	2 441
H	20 µL of tube G	60	6.10E-10	610
I	20 µL of tube H	60	1.53E-10	153
J	20 µL of tube I	60	3.81E-11	38
K	20 µL of tube J	60	9.54E-12	9.53
L	20 µL of tube K	60	2.38E-12	2.38
M ** (background)	0	60	0	0
N ** (background)	0	60	0	0
O ** (background)	0	60	0	0
P ** (background)	0	60	0	0

- * Dilute standards in diluent (e.g. 1X AlphaLISA Immunoassay Buffer).
At low concentrations of analyte, a significant amount of analyte can bind to the vial. Therefore, load the analyte standard dilutions in the assay microplate within 60 minutes of preparation.
- ** Four background points in triplicate (12 wells) are used when LDL is calculated. If LDL does not need to be calculated, one background point in triplicate can be used (3 wells).

- 3) Preparation of 10X MIX Anti-HBeAg AlphaLISA Acceptor beads (100 µg/mL) + biotinylated Anti-HBeAg antibody (10 nM):
 - a. Prepare just before use.
 - b. Add 50 µL Anti-HBeAg Acceptor beads and 50 µL of 500 nM biotinylated Anti-HBeAg antibody to 2 400 µl of 1X AlphaLISA Immunoassay Buffer
- 4) Preparation of 1.25X Streptavidin (SA) Donor beads (25 µg/mL):
 - a. Prepare just before use.
 - b. Keep the beads under subdued laboratory lighting.
 - c. Add 100 µL of 5 mg/mL SA-Donor beads to 19 900 µL of 1X AlphaLISA Immunoassay Buffer.

5) In a white Optiplate (384 wells):



Data Analysis

- Calculate the average count value for the background wells.
- Generate a standard curve by plotting the AlphaLISA counts versus the concentration of analyte. A log scale can be used for either or both axes. No additional data transformation is required.
- Analyze data according to a nonlinear regression using the 4-parameter logistic equation (sigmoidal dose-response curve with variable slope) and a $1/Y^2$ data weighting (the values at maximal concentrations of analyte after the hook point should be removed for correct analysis).
- The LDL is calculated by interpolating the average background counts (12 wells without analyte) + 3 x standard deviation value (average background counts + (3xSD)) on the standard curve.
- The LLOQ as measured here is calculated by interpolating the average background counts (12 wells without analyte) + 10 x standard deviation value (average background counts + (10xSD)) on the standard curve. Alternatively, the true LLOQ can be determined by spiking known concentrations of analyte in the matrix and measuring the percent recovery, and then determining the minimal amount of spiked analyte that can be quantified within a given limit (usually +/- 20% or 30% of the real concentration).
- Read from the standard curve the concentration of analyte contained in the samples.
- If samples have been diluted, the concentration read from the standard curve must be multiplied by the dilution factor.

Assay Performance Characteristics

AlphaLISA assay performance described below was determined using the 2 step protocol using AlphaLISA Immunoassay Buffer (IAB) as assay buffer. The analytes (standards) were prepared in IAB, DMEM + 10% FBS, RPMI +10% FBS.

- Assay Sensitivity:

The LDL was calculated as described above. The values correspond to the lowest concentration of analyte that can be detected in a volume of 5 μ L sample using the recommended assay conditions.

LDL (pg/mL)*	(Analyte diluent)	# of experiments
38	IAB	6
50	DMEM + 10% FBS	6
2446	RPMI + 10% FBS**	2

* Note that LDL can be decreased (i.e. sensitivity increased) by increasing the volume of analyte in the assay (e.g. use 10 μ L of analyte in a final assay volume of 50 μ L).

** It is not recommended to use in RPMI + 10% FBS.

- Assay Precision:

The following assay precision data were calculated from the three independent assays using two different kit lots. In each lot, the analytes were prepared in IAB and DMEM+10%FBS. All other components were prepared in IAB. Each assay consisted of one standard curve comprising 12 data points (each in triplicate) and 12 background wells (no analytes). The assays were performed in 384-well format.

- Intra-assay precision:

The intra-assay precision was determined using a total of 16 independent determinations in triplicate. Shown as CV%.

HBeAg	IAB	DMEM+ 10% FBS
CV (%)	6	6

- Inter-assay precision:

The inter-assay precision was determined using a total of 3 independent determinations with 18 measurements for 39.1 ng/mL sample. Shown as CV%.

HBeAg	IAB	DMEM+ 10% FBS
CV (%)	5	4

- Spike Recovery:

Three known concentrations of analyte were spiked into IAB and DMEM +10% FBS. All samples, including non-spiked diluents were measured in the assay. Note that the analytes for the respective standard curves were prepared in IAB, DMEM +10% FBS. All other assay components were diluted in IAB.

Spiked HBeAg (ng/mL)	% Recovery	
	IAB	DMEM+ 10% FBS
500	82	75
50	83	88
5	83	90

- Specificity and/or Selectivity:

Assay specificity and selectivity were tested with Hepatitis B virus core antigen (HBcAg) and Hepatitis B virus s antigen subtypes (HBsAg AD and HBsAg AY). There was 0.5 % cross-reactivity with HBcAg at concentration range of 10 ng/mL to 1µg/mL. No cross-reactivity was observed up to 10 µg/mL concentration of HBsAg AD and HBsAg AY.

Tested Antigen	% Detected
HBcAg	0.5
HBsAg AD	0.0
HBsAg AY	0.0

Troubleshooting Guide

You will find detailed recommendations for common situations you might encounter with your AlphaLISA Assay kit at:

<http://www.perkinelmer.com/lab-products-and-services/application-support-knowledgebase/alphalisa-alphascreen-no-wash-assays/alpha-troubleshooting.html>

FOR RESEARCH USE ONLY. NOT FOR USE IN DIAGNOSTIC PROCEDURES.

This product is not for resale or distribution except by authorized distributors.

LIMITED WARRANTY: PerkinElmer warrants that, at the time of shipment, the above named product is free from defects in material and workmanship and conforms to the specifications set forth above. PerkinElmer makes no other warranty, express or implied with respect to the product and expressly disclaims any warranty of merchantability or fitness for any particular purpose. Notification of any breach of the foregoing warranty must be made within 60 days of receipt of the product, unless otherwise provided in writing by PerkinElmer. No claim shall be honored if the customer fails to notify PerkinElmer within the period specified. The sole and exclusive remedy of the customer for any breach of the foregoing warranty is limited to either the replacement of the non-conforming product or the refund of the invoice price of the product. PERKINELMER SHALL NOT BE LIABLE FOR ANY DIRECT, INDIRECT, SPECIAL, INCIDENTAL, CONSEQUENTIAL OR PUNITIVE DAMAGES, WHETHER BASED ON CONTRACT, TORT, STRICT LIABILITY OR OTHERWISE, ARISING OUT OF THE DESIGN, MANUFACTURE, SALE, DELIVERY, OR USE OF THE PRODUCTS, EVEN IF THE LIMITED REMEDIES PROVIDED HEREIN FAIL OF THEIR ESSENTIAL PURPOSE OR PERKINELMER IS ADVISED OF THE POSSIBILITY OF SUCH DAMAGES.

PerkinElmer, Inc.
940 Winter Street
Waltham, MA 02451 USA
P: (800) 762-4000 or
(+1) 203-925-4602
www.perkinelmer.com



For a complete listing of our global offices, visit www.perkinelmer.com/ContactUs

Copyright© 2012, PerkinElmer, Inc. All rights reserved. PerkinElmer® is a registered trademark of PerkinElmer, Inc. All other trademarks are the property of their respective owners.