

Technical Data Sheet

Caution: Research use only.

AlphaLISA® SureFire® Ultra™ Raf-1 Total Assay Kit

**Products: ALSU-TRAF-A500, ALSU-TRAF-A10K, ALSU-TRAF-A50K,
ALSU-TRAF-A-HV**

Kit-Specificity Information

This assay kit contains antibodies which recognize invariant epitopes on Raf-1. These antibodies recognize Raf-1 of human, rat and mouse origin. Other species should be tested on a case-by-case basis. Raf-1 is also known as c-Raf. The human protein corresponds to Entrez Gene ID 5894.

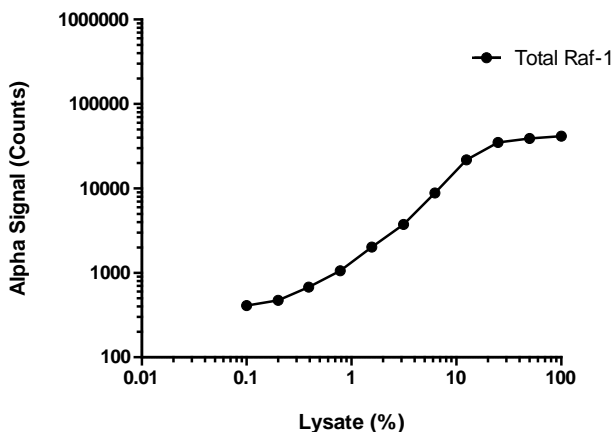
Control Lysate Information

Positive Control Lysate: Prepared from A431 cells, cultured to 80% confluence in T175 flasks in 10% FBS containing medium, medium removed and lysed in 4mL of 1X *SureFire Ultra* Lysis buffer.

Representative data

Data obtained with a 2-plate, 2-incubation protocol. A431 cell Control Lysate was serially diluted in 1X Lysis Buffer and assayed per the *SureFire Ultra* Raf-1 Total protocol.

Total Raf-1 Dilution A431 cell lysate



For more information and detailed protocols, please refer to the generic AlphaLISA *SureFire Ultra* Assay Kits Manual, available from <http://www.perkinelmer.com/category/alpha-surefire-kits>