

# Series 200 UV/Vis HPLC System



built to **withstand** the  
**challenges** of the **real world**

# compatible, workhorse components

PerkinElmer knows you need to rely on your HPLC system to get the job done day-in and day-out. That is why we designed and built the Series 200 family of HPLC instruments. The Series 200 is the workhorse relied upon by some of the world's largest HPLC laboratories. We are confident it will meet and exceed the LC demands of your lab, because each component – our detector, pump, autosampler and chromatography data systems (CDS) – has a proven track record. Best of all, all of our systems are backed by our renowned global service and support organization, so you will know you can rely on them today, tomorrow and for years to come.



## The brains behind the brawn - TotalChrom CDS

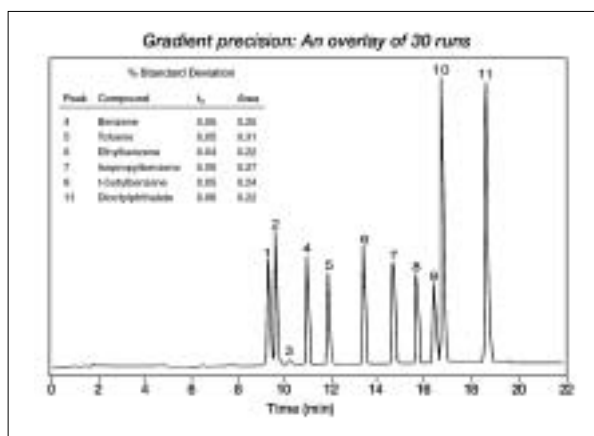
So, how do you make this HPLC system even better? Couple it with the industry-standard CDS that offers unparalleled solutions in terms of performance, compliance and scalability: TotalChrom® CDS. With TotalChrom, analyzing components in greater detail at a higher throughput level is faster and easier than you can imagine. You'll have single-point control for data-handling and instrument-control parameters. TotalChrom uses Microsoft® Windows® operating systems and familiar environments, allowing you to get up and running, building methods – fast.

- Instrument control of leading HPLC and GC systems
- Multilingual support
- Fully compliant for regulated lab use
- Fully customizable report generation



## Rugged and reliable - the Series 200 Pump is at the heart of the system

The Series 200 Pump design automatically compensates for solvent compressibility during each pump stroke. You will get greater accuracy, highly-precise flow rates and high-performance gradient capability. Designed to be long lasting and low maintenance, the proven, rugged design offers low piston wear for less downtime and lower cost of ownership on consumables.



- Slide-out drawer for easy access
- The best helium degasser available bar none, it pressurizes bottles at ~ 5 psi to protect/stabilize solvents and reduce helium consumption. Vacuum degassing is also available via the Series 200 Degasser
- Two-point flow calibration
- Pumps can be upgraded to additional solvent capabilities right in your lab (isocratic to binary to quaternary)

designed to **never let you down**



**Fast, accurate and flexible...  
the Series 200 Autosampler –  
complete control, so little effort**

The Series 200 Autosampler is a real time-saver – you will wonder what you ever did without it! Its ability to rapidly bring the needle to the sample allows you to eliminate the time-consuming process of moving sample vials, potentially causing error. You could save up to 50% of the time spent in sample loading/injection!

- Advanced design for injection-valve flushing and external-needle wash reduces carryover – offers a 0.02% carryover specification
- Impressive linearity
- Boasts the industry's best onboard automated derivatization/dilution performance of any analytical autosampler
- Onboard temperature control of vials or microtiter plates
- Full control of needle level within sample vials/trays



**The Series 200 UV/Vis Detector –  
sensitive, stable and ready for  
any challenge**

A solid foundation for your total HPLC system, this high-sensitivity, high-throughput workhorse offers efficient performance, 24 hours-a-day, 7 days-a-week.

This detector employs a proven, dual-beam optical design for high sensitivity even for difficult ultratrace analysis. The Series 200 UV/Vis supports either Deuterium (D<sub>2</sub>) or Tungsten source lamps, offering true visible wavelength performance. Lamp changes are quick and easy due to a smart, self-aligning mount, so you'll spend less time maintaining your detector and more time running analyses.

- Full wavelength programmability allows for automated analysis
- Ability to link methods saves time and increases productivity
- Choice of several flow-cell formats to meet your requirements
- Outstanding linearity, even at extremely low or high concentrations





# PerkinElmer, Inc.

---

There for the installation –  
**and beyond.**

PerkinElmer manufactures and supports the broadest range of instruments, reagents and consumables in the industry. With over 60 years of experience, our knowledge, skills and expertise are unparalleled.

We have the largest and most experienced service force in the industry, so you can count on us to be there when you need us. Our 1200 factory-trained and certified engineers have an average 15 years of experience maintaining leading-edge scientific equipment, including preventative maintenance, validation support and instrument repair. Plus you can rely on end-to-end training and technical and applications support, from sample handling through data handling.

PerkinElmer Life and  
Analytical Sciences  
710 Bridgeport Avenue  
Shelton, CT 06484-4794 USA  
Phone: (800) 762-4000 or  
(+1) 203-925-4602  
[www.perkinelmer.com](http://www.perkinelmer.com)



---

For a complete listing of our global offices, visit [www.perkinelmer.com/lasoffices](http://www.perkinelmer.com/lasoffices)

©2006 PerkinElmer, Inc. All rights reserved. The PerkinElmer logo and design are registered trademarks of PerkinElmer, Inc. TotalChrom is a registered trademark of PerkinElmer, Inc. or its subsidiaries, in the United States and other countries. Microsoft and Windows are registered trademarks of Microsoft Corporation. All other trademarks not owned by PerkinElmer, Inc. or its subsidiaries that are depicted herein are the property of their respective owners. PerkinElmer reserves the right to change this document at any time without notice and disclaims liability for editorial, pictorial or typographical errors.