

HUMAN HEALTH

ENVIRONMENTAL HEALTH



ENHANCED  
CAPABILITIES  
TAKE YOU TO NEW AND  
EXCITING PLACES.



**EnSpire with Alpha Technology**  
Multilabel Plate Reader

**POWERFUL** 淺  
**-YET SIMPLE-**  
**SOFTWARE**

ANCED  
ILITIES

RESEARCH  
FLEXIBILITY  
DEVELOPMENT

MULTILABEL PLATE DETECTOR  
AFFORDABLE  
EnSpire™

BEST PERFORMANCE  
FOR

AlphaScreen  
AlphaLISA®  
ELISA

INNOVATIVE  
TOUCH SCREEN

## EnSpire with Alpha Technology

# DISCOVER ALPHA TECHNOLOGY AND BEYOND

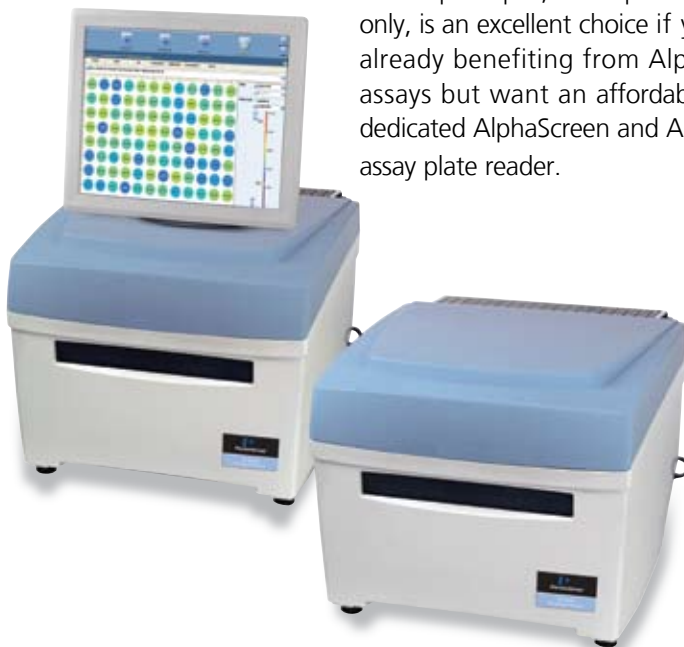
Now you can have the proven quad monochromator and filter technology of EnVision®, in a platform that's ideal for any size lab. The new EnSpire™ with Alpha technology delivers AlphaScreen® and AlphaLISA®

capabilities with superior speed and sensitivity, and continues PerkinElmer's tradition of leadership in detection technology.

### Get the best of both worlds

The EnSpire AlphaPLUS, equipped with alpha and absorbance capability, is the perfect platform for your current ELISA assays. It also allows you to start taking advantage of no-wash AlphaLISA technology.

The EnSpire Alpha, with Alpha technology only, is an excellent choice if you're already benefiting from AlphaLISA assays but want an affordable, dedicated AlphaScreen and AlphaLISA assay plate reader.

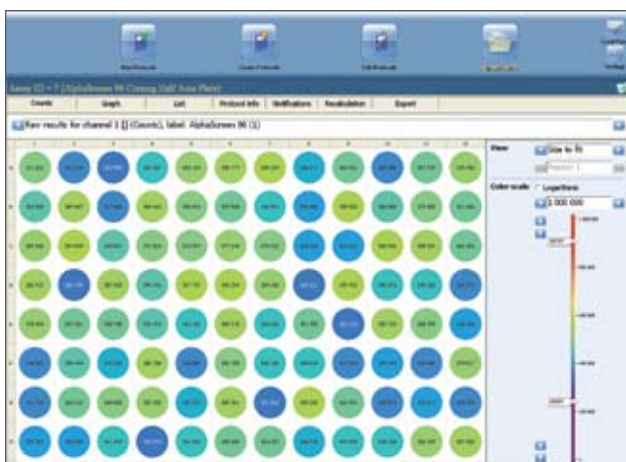


### Key features

- Affordable Alpha technology
- Intuitive, user-friendly software
- Touch screen and integrated computer
- Combined Alpha and absorbance capability
- Protocol Wizard® Guide, including validated Alpha and ELISA assay protocols
- Patent-pending ultra-sensitive Alpha detector with laser excitation
- Integrated concentration calculation tools
- Open plate-holder design, adjustable loading position, COM interface library

### Major benefits

- Access AlphaScreen technology, with lower compound interference, lower assay costs and the convenience of no-wash ELISA
- EnSpire is fast and easy to learn! No need for an additional computer. Be running your first detection method in as little as one minute
- Combines photometric ELISA assays and high-performance Alpha technology in the same instrument for simple, convenient and affordable ELISA conversion to Alpha assays
- Ready to use right out of the box with pre-coded assay protocols. Plus easily create your own protocols.
- Superior Alpha technology sensitivity, proven in the flagship EnVision plate reader
- Provides final assay analysis and results directly from the reader
- Automation-friendly detection



User-friendly interface saves you time and keeps your lab moving forward.

## Explore the possibilities with enhanced performance

Our proven Alpha technology in the EnSpire AlphaPLUS takes laser-based AlphaScreen performance where it's never been before. High efficiency and low cross-talk deliver short measurement times, reliable signal levels and consistent results. In addition, the filter-based photometric technology gives you the power to detect all absorbance-based ELISA and DNA/protein quantitation assays. And it's easily integrated into liquid handling systems such as the JANUS® Automated Workstation.

## Customizable control for a lab that's going places

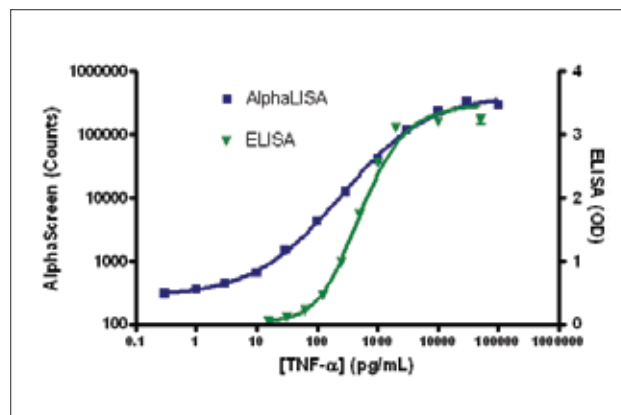
We want to help labs of every size expand their research with Alpha technologies. Featuring an integrated computer, an intuitive touch screen and built-in data-analysis software, EnSpire is configurable to meet your specific needs.

In addition, now you can focus more on your research because the software is so simple and easy to use. And by taking advantage of the library of pre-set protocols, you can run assays without any delays.

- Offers pre-coded assay protocols
- Delivers integrated data-analysis software for what's important to you: curve fit (lin-reg, spline, 4PL/5PL), background subtraction, ratio calculation, IC<sub>50</sub> calculation, average, CV%, Z'-value
- Easily export your data to the network or onto a USB memory stick

## See the benefits of AlphaLISA over ABS assays

The advantages of no-wash AlphaLISA over standard ELISA technology include a wide dynamic range, high sensitivity and significant time and cost savings. AlphaLISA also provides sensitive and homogeneous "mix-and-measure" immunoassays with a broad analyte concentration range.



Dilution curves of TNF- $\alpha$  AlphaLISA and ELISA (96-well plate). Linear and dynamic ranges were 2 and 4 orders of magnitude, respectively. Lowest detection limit for AlphaLISA TNF- $\alpha$  assay was 1.5 pg/mL.

### For a wide range of applications

- Conventional ELISA assays
- "Mix-and-Read" AlphaLISA assays
- Kinase and cellular signaling-related assays, such as AlphaScreen *SureFire*®
- Quantitation assays
- Cell viability assays
- Cellular GPCR assays and cGMP, such as AlphaScreen *SureFire*® ERK and AlphaScreen cAMP
- Biochemical kinase assays including antibody free

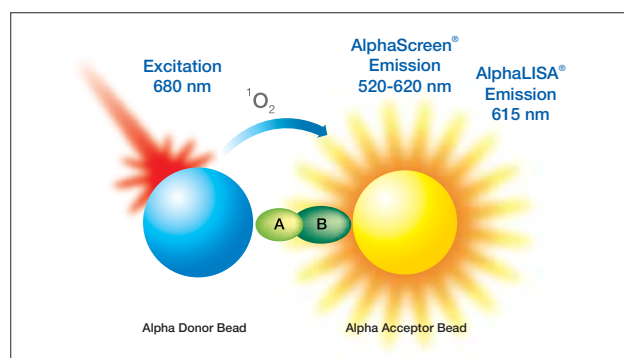
### Therapeutic areas of AlphaLISA

- Angio-genesis
- Inflammation
- Biologics
- Metabolic
- Cancer
- Neuro-degeneration
- Cardiovascular

## Go further with Alpha technology

Alpha technology allows you to analyze the most complex samples and molecules – such as those containing serum and full-length proteins – faster and without laborious wash steps. AlphaScreen and AlphaLISA are powerful reagent platforms that utilize PerkinElmer's proprietary bead-based Alpha technology. Both are ideal to measure the largest and most complex molecules:

- AlphaScreen is the most versatile and physiologically relevant assay for large biological molecules. It is perfect for biochemical and cellular screening applications.
- AlphaLISA is the no-wash ELISA assay alternative that allows you to run samples more efficiently without compromising sensitivity. It's less time intensive than traditional ELISAs and minimizes interference from difficult samples such as serum or plasma.



Exclusive Alpha technology: bead-based platforms.

Together, AlphaScreen and AlphaLISA allow you to measure a wide range of biological molecules and interactions in a custom or high throughput format without the need for washing and diluting. Either platform is ideal for automation and saves time, labor, reagents and other resources.

## Multilabel detection from PerkinElmer – the complete portfolio to meet every customer's application and budget



EnSpire



VICTOR X



EnVision



ViewLux

To learn more about EnSpire with Alpha technology and our entire plate reader portfolio (including VICTOR™, EnVision and ViewLux™), please contact your PerkinElmer sales representative at 1-800-762-4000 or (+1) 203-925-4602, or visit [www.perkinelmer.com/enspire](http://www.perkinelmer.com/enspire).

PerkinElmer, Inc.  
940 Winter Street  
Waltham, MA 02451 USA  
P: (800) 762-4000 or  
(+1) 203-925-4602  
[www.perkinelmer.com](http://www.perkinelmer.com)



For a complete listing of our global offices, visit [www.perkinelmer.com/ContactUs](http://www.perkinelmer.com/ContactUs)

Copyright © 2009, PerkinElmer, Inc. All rights reserved. PerkinElmer® is a registered trademark of PerkinElmer, Inc. All other trademarks are the property of their respective owners.

008446\_02

Printed in USA