

MAXIMIZING PERFORMANCE AND PRODUCTIVITY FOR FLOW CYTOMETRY

PerkinElmer OneSource Scientific Services

Comprehensive services and technical expertise improve quality and reliability of experimental results and reduce instrument downtime and service calls.

ARE YOU SPENDING MORE TIME ON INSTRUMENT OPTIMIZATION AND READINESS THAN ON ACTUAL SCIENCE?

Flow cytometers are complex instruments with high technical expertise demands, potentially draining lab resources with service and operational requirements. Technical issues can trigger complete data loss and costly instrument downtime due to a lack of redundancy.

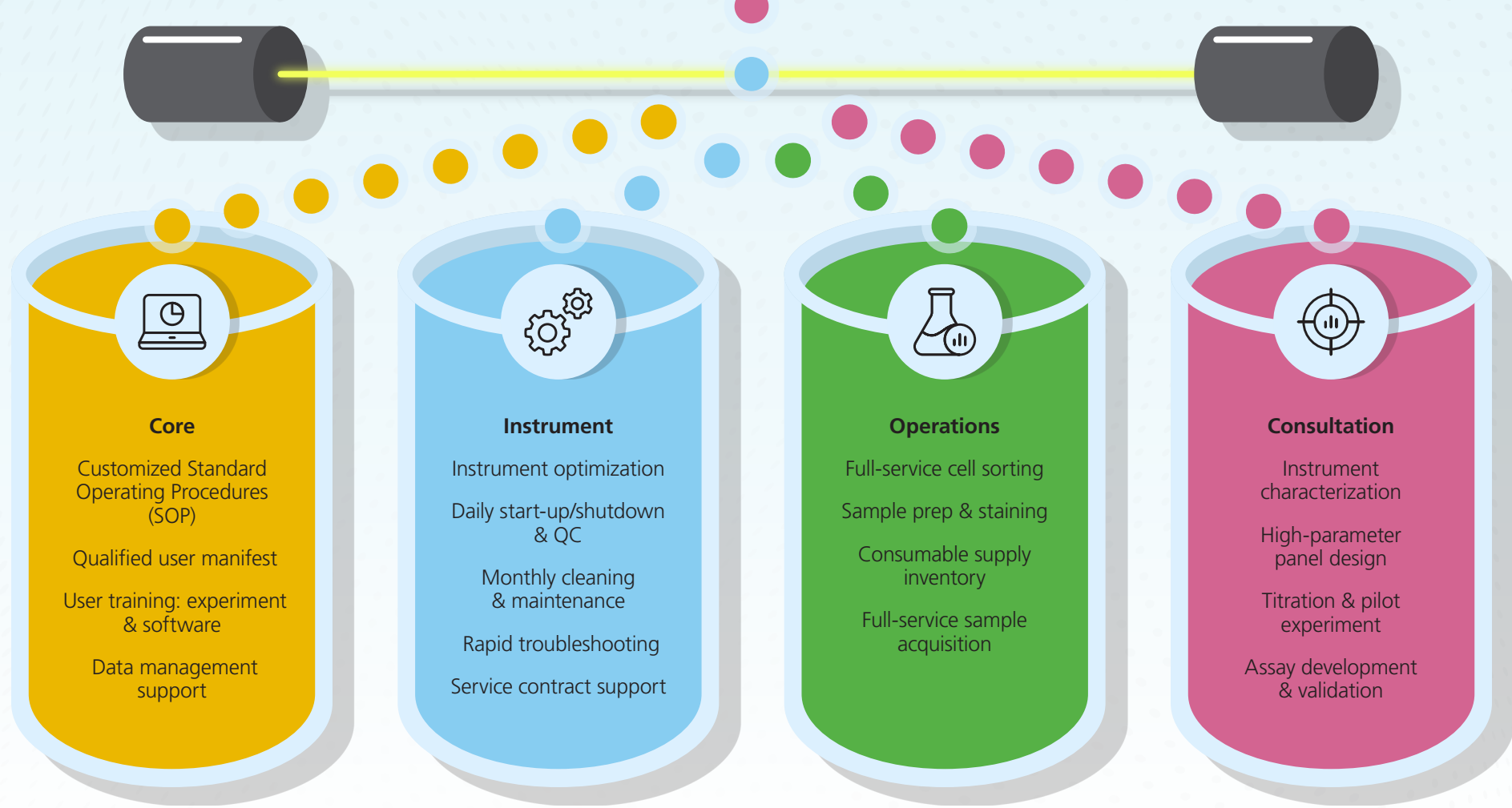
Returning time to science: PerkinElmer's OneSource Flow Cytometry Instrument Concierge™ service places specialists and processes in your lab to support your research and drastically reduce instrument downtime. These services combine the skills, expertise, and experience that can return two full-time equivalent man-hours per expert to principal scientists.



PerkinElmer's flow cytometry service is the perfect solution for bringing capabilities back in-house. We provide on-site managed services customized to fit your needs.

Optimizing Performance

Careful attention to administrative, maintenance, and experimental protocols optimizes the performance, reliability, and reproducibility of your flow cytometry assays.



Customizable service models to meet individual lab needs.

MINIMIZING DOWNTIME

The fully managed flow cytometry service delivers highly skilled and experienced personnel on site. Their expertise in flow cytometers across manufacturers and models allows rapid detection, diagnosis, and resolution of technical issues.

Frontline stories—PerkinElmer flow cytometry specialists reflect on key elements of their success.

Through routine daily startup and QCs, the core staff can put out fires and deal with any underlying issues before users arrive.

Prevention—rather than repair—saves the loss of live samples. I am the only one in my OEM field manager's area who maintains the syringes on autosamplers with the optimal procedures and intervals.

To provide our customers with valuable advice, I'm always ready to describe the configuration details of this core's 20 flow cytometers, and summarize the emerging fluorochrome technologies quarterly.

To find the cause of gradually diminishing PE signal, I performed a 7-hour time-lapse measuring air pressure and laser delay. We were able to locate an extremely slow leak and repair with minimal cost.

I tell beginners it's fine to make mistakes in their practice run. "Unless you open the cytometer's chassis and smash it with a hammer, I will fix all damage in the blink of an eye."

FLOW CYTOMETRY INSTRUMENT CONCIERGE SERVICES SUPPORT ONGOING OPERATIONS, INCREASING YOUR LAB'S PRODUCTIVITY.

Learn more about how OneSource's comprehensive Instrument Concierge™ services, including CyTOF and Purification:

- Improve performance, productivity, safety, and data integrity
- Enhance daily workflows and scientific processes
- Stream-line instrument management
- Ensure instrument compliance

www.perkinelmer.com/category/scientific-services

