

## Informatics

### Key Features

- Pre-translated for seven languages
- Translations are modifiable and extensible
- Supports double-byte characters



LABWORKS LIMS backlog reporting in Russian.

## Local Language Support for Global Lab Operations

### Local Language Capability

Global organizations need increasingly reliable, scalable solutions for managing and tracking laboratory sample and results data. Effective language localization is also paramount to effective laboratory operations on a global scale. PerkinElmer's LABWORKS™ team has installed and implemented LIMS

since 1985. This real-world experience created a flexible LIMS solution that meets the varied needs of laboratory managers and LIMS users worldwide.

LABWORKS LIMS offers multi-language functionality to streamline laboratory data management and speed the flow of enterprise information. Using the native language interface, LABWORKS users can analyze and report on sample data in a variety of local languages – all from the same Desktop or WebTop interface.

### Greater Flexibility

LABWORKS is unique in its ability to alternate between languages at the point of user login. With the multi-language interface, users can instantly select their local language and database of choice. For even greater flexibility, users within a networked installation can each run different languages.

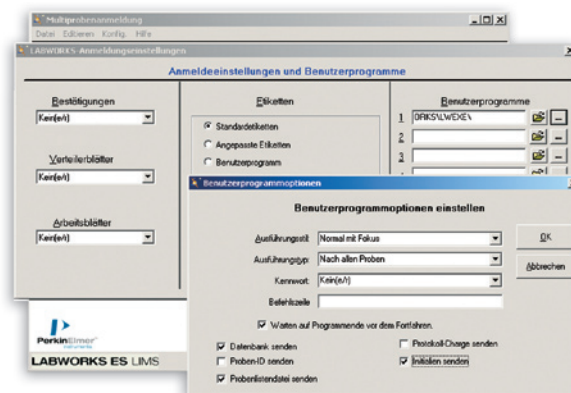
Languages that are not currently in the translation set are still accommodated within the database. The LABWORKS translation tool allows the System Administrator to add new languages, or modify existing ones. The language interface can even be customized during the implementation process. For example, the interface terminology could be changed to reflect an individual organization's laboratory workflow and business practices.

### Fast Implementation

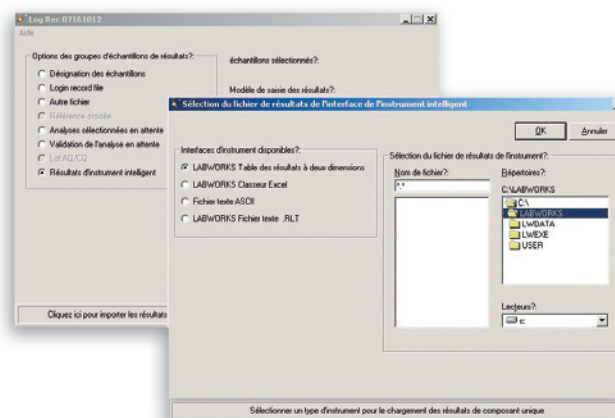
Localization of LIMS software can become a difficult and lengthy process since converting a program to a new language usually involves modifying the source code. PerkinElmer's approach of isolating the text from the source code and putting it into a database drastically shortens the time required to implement a new language. Using a new localization tool created by our LABWORKS developers, we can dramatically increase the number of languages supported in a very short period of time.

### Seven Available Translation Sets

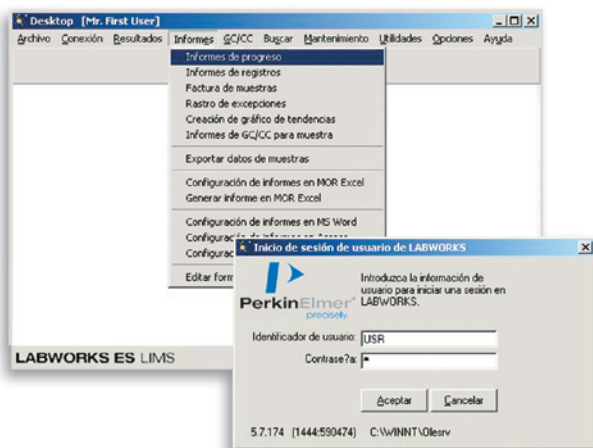
- Chinese
- English
- French
- German
- Italian
- Russian
- Spanish



Multi-sample login in German.



Results entry in French.



LABWORKS desktop, security server in Spanish.



SQC chart setup in Chinese.

PerkinElmer, Inc.  
 940 Winter Street  
 Waltham, MA 02451 USA  
 P: (800) 762-4000 or  
 (+1) 203-925-4602  
[www.perkinelmer.com](http://www.perkinelmer.com)



For a complete listing of our global offices, visit [www.perkinelmer.com/ContactUs](http://www.perkinelmer.com/ContactUs)

Copyright © 2003-2011, PerkinElmer, Inc. All rights reserved. PerkinElmer® is a registered trademark of PerkinElmer, Inc. All other trademarks are the property of their respective owners.