

LANCE *Ultra* ApoE (Human) Detection Kit

Product number: TRF1395 C/M

Lot number: 2943668

Manufacturing date: November 9, 2021

Research Use Only. Not for use in diagnostic procedures.

○ Contents

○ Product Information.....	2
○ Quality Control	3
○ Analyte of Interest.....	3
○ Description of the LANCE <i>Ultra</i> Assay.....	3
○ Precautions.....	3
○ Kit Content: Reagents and Materials	4
○ Recommendations	5
○ Assay Procedure.....	6
○ Data Analysis.....	7
○ Assay Performance Characteristics	8
○ Troubleshooting Guide.....	10

○ Product Information

- Application:** This kit is designed for the quantitative determination of ApoE in media using a homogeneous LANCE *Ultra* assay (no wash steps).
- Sensitivity:** Lower Detection Limit (LDL): 15.9 pg/mL
Lower Limit of Quantification (LLOQ): 83.2 pg/mL
EC₅₀: 12.2 ng/mL
- Dynamic range:** Kit designed to detect ApoE between: 15.9– 100,000 pg/mL (Figure 1).

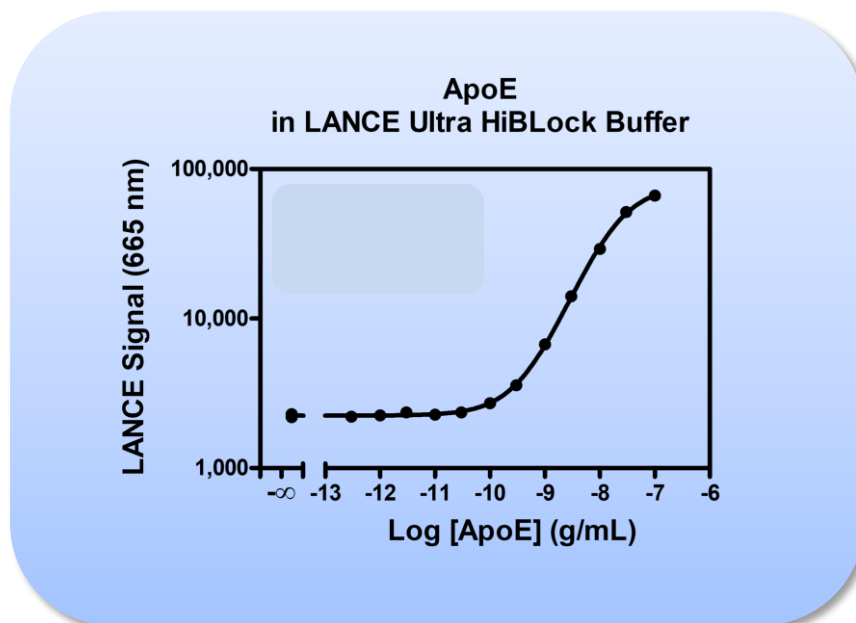


Figure 1. Typical sensitivity curves in *Ultra* HiBlock Buffer. The data was generated using a white OptiPlate™ -384 microplate and the EnVision Plate Reader equipped with TR-FRET option and a TRF laser. Performance on other plate readers may vary.

- Storage:** Store kit in the dark at +4°C. Store reconstituted analyte at -20°C.
- Stability:** This kit is stable for at least 12 months from the manufacturing date when stored in its original packaging and the recommended storage conditions

○ Quality Control

Lot to lot consistency is confirmed in an LANCE *Ultra* assay. EC₅₀ and LDL were measured on the, EnVision Multilabel Plate Reader equipped with TR-FRET option and a TRF laser using the protocol described in this technical data sheet. We certify that these results meet our quality release criteria. Assay performance may vary between lots and by the instrument used

EC ₅₀ :	25.430 ng/mL
LDL:	39.520 pg/mL
LLOQ	204.900 pg/mL

○ Analyte of Interest

Apolipoprotein E (ApoE) is produced in the liver, brain, kidneys, and spleen. ApoE is mostly found in the intermediate-density lipoproteins. A critical component of triglyceride-rich lipoproteins, it transports lipoproteins, fat-soluble vitamins, and cholesterol into the tissues and then into the blood. This protein is initially recognized for its importance in lipoprotein metabolism and cardiovascular disease. Recently, ApoE has been shown to be involved in Alzheimer's disease, immunoregulation, and cognition.

○ Description of the LANCE *Ultra* Assay

LANCE® and LANCE® (Lanthanide chelate excite) *Ultra* are our TR-FRET (time-resolved fluorescence resonance energy transfer), homogeneous (no wash) technologies. One antibody of interest is labeled with a donor fluorophore (a LANCE Europium chelate) and the second molecule is labeled with an acceptor fluorophore [ULight™ dye]. Upon excitation at 320 or 340 nm, energy can be transferred from the donor Europium chelate to the acceptor fluorophore if sufficiently close for FRET (~10 nm). This results in the emission of light at 665 nm.

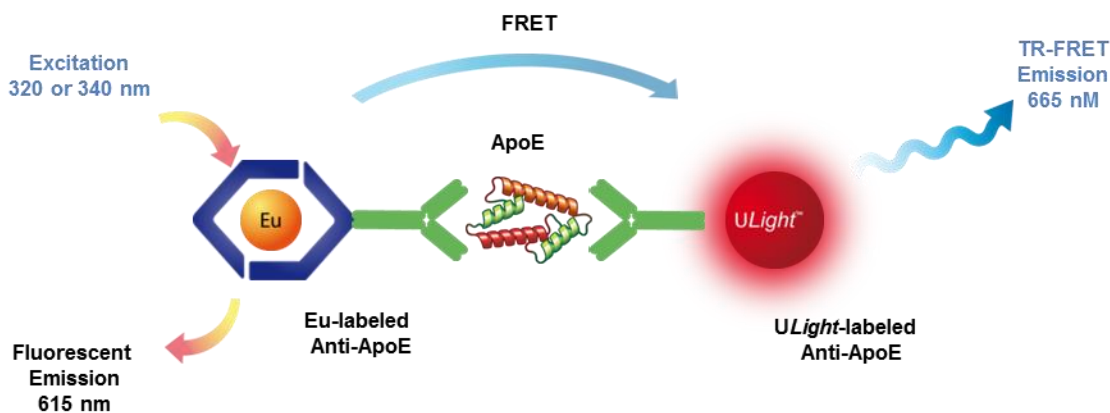


Figure 2. LANCE assay principle.

○ **Precautions**

- All blood components and biological materials should be handled as potentially hazardous.
- Some analytes are present in saliva. Take precautionary measures to avoid contamination of the reagent solutions.

○ **Kit Content: Reagents and Materials**

Kit components	TRF1395C (500 assay points ^{***})	TRF1395M (10 000 assay points ^{***})
LANCE <i>Ultra</i> Eu-labeled Anti-ApoE Antibody stored in TSA, 0.1% BSA	10 µL @ 500 nM (1 clear tube, yellow cap)	120 µL @ 500 nM (1 clear tube, orange cap)
LANCE <i>Ultra ULight</i> -labeled Anti-ApoE Antibody stored in TSA, 0.1% BSA	60 µL @ 500 nM (1 brown tube, blue cap)	1200 µL @ 500 nM (1 brown tube, green cap)
ApoE Analyte* lyophilized	0.3 µg (1 tube, <u>clear</u> cap)	0.3 µg (1 tube, <u>clear</u> cap)
<i>Ultra</i> HiBlock Buffer (5X) **	2 mL, 1 small bottle	100 mL, 1 large bottle

* Reconstitute ApoE in 100 µL Milli-Q® grade H₂O. The reconstituted analyte should be used within 60 minutes or aliquoted into screw-capped polypropylene vials and stored at -20°C for further experiments. Avoid multiple freeze-thaw cycles. One vial contains an amount of ApoE sufficient for performing 10 standard curves. Additional vials can be ordered separately (cat # TRF1395S).

** Extra buffer can be ordered separately (cat # TRF1011C: 10 mL, cat # TRF1011F: 100 mL). 5X *Ultra* HiBlock Buffer may appear cloudy, especially after storage at cold temperature. Agitate and/or stir at room temperature to redissolve prior to dilution.

*** The number of assay points is based on an assay volume of 20 µL in 384-well assay plates using the kit components at the recommended concentrations.

Sodium azide should **not** be added to the stock reagents. High concentrations of sodium azide (> 0.001 % final in the assay) might decrease the signal.

Specific additional required reagents and materials:

The following materials are recommended:

Item	Suggested source	Catalog #
TopSeal-A PLUS Adhesive Sealing Film	PerkinElmer Inc.	6050185
EnVision Multilabel Plate Reader equipped with TR-FRET option and a TRF laser	PerkinElmer Inc.	-

○ Recommendations

General recommendations:

- The volume indicated on each tube is guaranteed for single pipetting. Multiple pipetting of the reagents may reduce the theoretical amount left in the tube.
- Centrifuge all tubes (including lyophilized analyte) before use to improve recovery of content (2000g, 10-15 sec).
- Re-suspend all reagents by vortexing before use.
- Use Milli-Q® grade H₂O (18 MΩ•cm) to dilute Buffer.
- When diluting the standard or samples, change tips between each standard or sample dilution. When loading reagents in the assay microplate, change tips between each standard or sample addition and after each set of reagents.
- When reagents are added to the microplate, make sure the liquids are at the bottom of the well.
- Small volumes may be prone to evaporation. It is recommended to cover microplates with TopSeal-A Adhesive Sealing Films to reduce evaporation during incubation. LANCE Ultra TR-FRET assays cannot be read with the TopSeal-A Film attached. Please remove before reading.
- LANCE signal is detected using a VICTOR X, ViewLux, EnVision or EnSpire Multilabel Reader equipped with the TR-FRET. Use an excitation wavelength of 320 or 340 nm to excite the LANCE Europium chelate. We recommend you read this assay in dual emission mode, detecting both the emission from the Europium donor fluorophore at 615 nm, and the acceptor fluorophore (at 665 nm for *ULight* dye). The raw FRET signal at 665 nm can be used to process your data.
- Signal will vary with temperature and incubation time. For consistent results, identical incubation times and temperature should be used for each plate.
- The standard curves shown in this technical data sheet are provided for information only. A standard curve must be generated for each experiment. The standard curve should be performed in *Ultra* HiBlock Buffer

○ Assay Procedure

IMPORTANT: PLEASE READ THE RECOMMENDATIONS BELOW BEFORE USE

- The protocol described below is an **example** for generating one standard curve in a 20 µL final assay volume (48 wells, triplicate determinations) and 452 samples. The protocols also include testing samples in 384 well plates. If different amounts of samples are tested, the volumes of all reagents must be adjusted accordingly, as shown in the table below.
*** These calculations do not include excess reagents to account for losses during transfer of solutions or dead volumes.
- The standard dilution protocol is provided for information only. As needed, the number of replicates or the range of concentrations covered can be modified.
- Use of four background points in triplicate (12 wells) is recommended when LDL/LLOQ is calculated. One background point in triplicate (3 wells) can be used when LDL/LLOQ is not calculated.

Format	# of data points	Volume			Plate recommendation
		Final	Sample	Eu-Antibody/ <i>ULight</i> -Antibody MIX	
TRF1395C	250	40 µL	30 µL	10 µL	White OptiPlate-96 (cat # 6005290) White ½ AreaPlate-96 (cat # 6005560)
	500	20 µL	15 µL	5 µL	White ½ AreaPlate-96 (cat # 6005560) White OptiPlate-384 (cat # 6007290)
	1 250	8 µL	6 µL	2 µL	ProxiPlate™-384 Plus (cat # 6008280) White OptiPlate-384 (cat # 6007290)
	2 500	4 µL	3 µL	1 µL	White OptiPlate-1536 (cat # 6004290)
TRF1395M	10 000	20 µL	15 µL	5 µL	White ½ AreaPlate-96 (cat # 6005560) White OptiPlate-384 (cat # 6007290)
	25 000	8 µL	6 µL	2 µL	ProxiPlate-384 Plus (cat # 6008280) White OptiPlate-384 (cat # 6007290)
	50 000	4 µL	3 µL	1 µL	White OptiPlate-1536 (cat # 6004290)

General Protocol (1-step protocol): Dilute standards, samples, and assay components in 1X *Ultra* HiBlock Buffer.

Each protocol described below is designed for 500 assay points including one standard curve (48 wells) and samples (452 wells).

Standard Preparation:

1) Preparation of 1X *Ultra* HiBlock Buffer:

- a. Add 2 mL of 5X *Ultra* HiBlock Buffer to 8 mL H₂O.

2) Preparation of ApoE analyte standard dilutions:

- a. ApoE analyte is provided at 0.3 µg in lyophilized form. Reconstitute with 100 µL H₂O to create a 3 µg/mL solution. Prepare standard dilutions as follows (change tip between each standard dilution):

Tube	Vol. of ApoE (µL)	Vol. of diluent (µL) *	[ApoE] in standard curve	
			(g/mL in 15 µL)	(pg/mL in 15 µL)
A	10 µL of reconstituted ApoE	90	3.00E-07	300 000
B	30 µL of tube A	60	1.00E-07	100 000
C	30 µL of tube B	70	3.00E-08	30 000
D	30 µL of tube C	60	1.00E-08	10 000
E	30 µL of tube D	70	3.00E-09	3 000
F	30 µL of tube E	60	1.00E-09	1 000
G	30 µL of tube F	70	3.00E-10	300
H	30 µL of tube G	60	1.00E-10	100
I	30 µL of tube H	70	3.00E-11	30
J	30 µL of tube I	60	1.00E-11	10
K	30 µL of tube J	70	3.00E-12	3
L	30 µL of tube K	60	1.00E-12	1
M ** (background)	0	100	0	0
N ** (background)	0	100	0	0
O ** (background)	0	100	0	0
P ** (background)	0	100	0	0

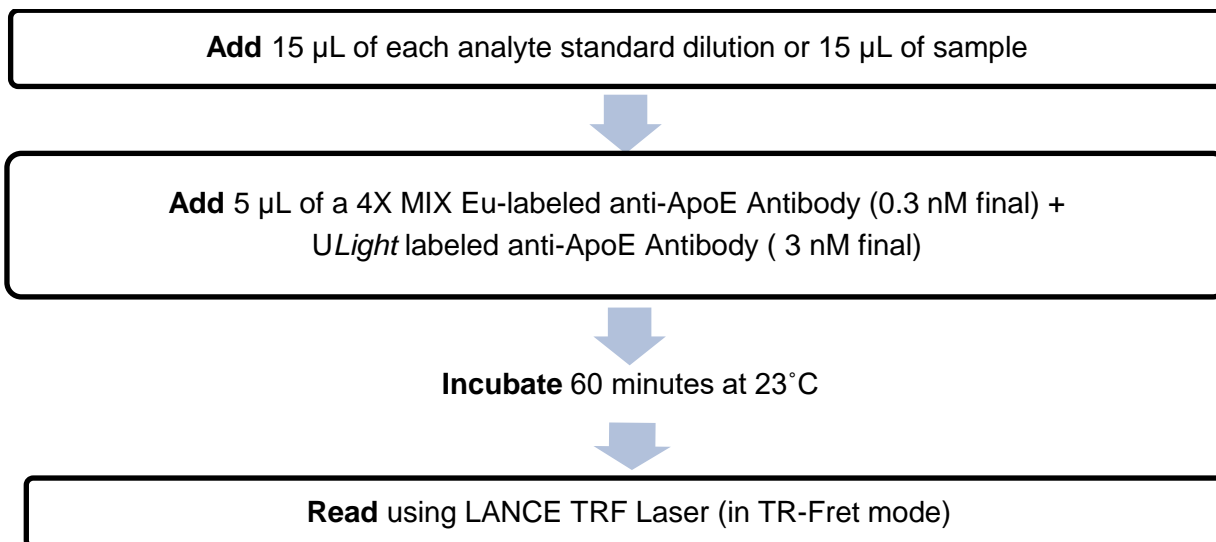
* At low concentrations of analyte, a significant amount of analyte can bind to the vial. Therefore, load the analyte standard dilutions in the assay microplate within 60 minutes of preparation.

** Four background points in triplicate (12 wells) are used when LDL is calculated. If LDL does not need to be calculated, one background point in triplicate can be used (3 wells).

3) Preparation of 4X MIX Eu-labeled anti-ApoE Antibody (1.2 nM) + *ULight* labeled anti-ApoE Antibody (12 nM):

- a. Add 6 µL of 500 nM Eu-labeled anti-ApoE Antibody and 60 µL of 500 nM *ULight*-labeled anti-ApoE Antibody to 2434 µL of *Ultra* HiBlock Buffer.
 b. Prepare just before use.

4) In a white Optiplate (384 wells):



Important: LANCE signal is detected using an EnVision Multilabel Reader equipped with the TR-FRET. Use an excitation wavelength of 320 or 340 nm to excite the LANCE Europium chelate. We recommend you read this assay in dual emission mode, detecting both the emission from the Europium donor fluorophore at 615 nm, and the acceptor fluorophore (at 665 nm for *ULight* dye).

○ Data Analysis

- Calculate the average count value for the background wells.
- Generate a standard curve by plotting the LANCE counts versus the concentration of analyte. A log scale can be used for either or both axes. No additional data transformation is required.
- Analyze data according to a nonlinear regression using the 4-parameter logistic equation (sigmoidal dose-response curve with variable slope) and a $1/Y^2$ data weighting (the values at maximal concentrations of analyte after the hook point should be removed for correct analysis).
- The LDL is calculated by interpolating the average background counts (12 wells without analyte) + 2 x standard deviation value (average background counts + (2xSD)) on the standard curve.
- The LLOQ as measured here is calculated by interpolating the average background counts (12 wells without analyte) + 10 x standard deviation value (average background counts + (10xSD)) on the standard curve. Alternatively, the true LLOQ can be determined by spiking known concentrations of analyte in the matrix and measuring the percent recovery, and then determining the minimal amount of spiked analyte that can be quantified within a given limit (usually +/- 20% or 30% of the real concentration).
- Read from the standard curve the concentration of analyte contained in the samples.
- If samples have been diluted, the concentration read from the standard curve must be multiplied by the dilution factor.

○ Assay Performance Characteristics

LANCE Ultra assay performance described below was determined using the 1 step protocol.

Assay Sensitivity

The LDL and LLOQ were calculated as described above. The values correspond to the lowest concentration of analyte that can be detected in a volume of 15 µL using the recommended assay conditions.

LDL (pg/mL)	LLOQ (pg/mL)	Buffer	# of experiments
15.9	83.2	<i>Ultra</i> HiBlock	9
50.0	216.9	DMEM	6
31.3	146.4	RPMI	6

Assay Precision:

The following assay precision data were calculated from the three independent assays using two different kit lots. In each lot, the analytes were prepared in *Ultra* HiBlock Buffer. Each assay consisted of one standard curve comprising 12 data points in triplicate and 12 background wells containing no analyte. The assays were performed in a 384-well format using *Ultra* HiBlock Buffer.

Intra-assay precision:

The intra-assay precision was determined using 3 independent experiments for a total of 16 independent determinations in triplicate. CV% were calculated for each individual experiment then averaged. Shown is the average intra-experimental CV%.

ApoE (CV%)	Buffer
2	<i>Ultra</i> HiBlock
2	DMEM
2	RPMI

Inter-assay precision:

The inter-assay precision was determined using the data across 3 independent experiments with 16 measurements in triplicate. CV% was calculated by comparing the same measurement in each experiment. The CV% for all 16 measurements were then averaged. Shown is the inter-experimental CV%.

ApoE (CV%)	Buffer
6	<i>Ultra</i> HiBlock
5	DMEM
5	RPMI

Spike Recovery:

In four experiments, three known concentrations of ApoE were spiked into 3 separate media and performed triplicate. The spiked samples were referenced to the ApoE analyte curve produced in the corresponding media.

Spiked ApoE (ng/mL)	% Recovery		
	Ultra HiBlock Buffer	DMEM + 10% FBS	RPMI + 10% FBS
10	93	95	98
3	89	101	97
1	84	106	106

○ **Troubleshooting Guide**

You will find detailed recommendations for common situations you might encounter with your LANCE *Ultra* Assay kit at:

<http://www.perkinelmer.com/Resources/TechnicalResources/ApplicationSupportKnowledgebase/LANCE/lance.xhtml>

FOR RESEARCH USE ONLY. NOT FOR USE IN DIAGNOSTIC PROCEDURES.

This product is not for resale or distribution except by authorized distributors.

LIMITED WARRANTY: PerkinElmer BioSignal Inc. warrants that, at the time of shipment, the products sold by it are free from defects in material and workmanship and conform to specifications which accompany the product. PerkinElmer BioSignal Inc. makes no other warranty, express or implied with respect to the products, including any warranty of merchantability or fitness for any particular purpose. Notification of any breach of warranty must be made within 60 days of receipt unless otherwise provided in writing by PerkinElmer BioSignal Inc. No claim shall be honored if the customer fails to notify PerkinElmer BioSignal Inc. within the period specified. The sole and exclusive remedy of the customer for any liability of PerkinElmer BioSignal Inc. of any kind including liability based upon warranty (express or implied whether contained herein or elsewhere), strict liability contract or otherwise is limited to the replacement of the goods or the refunds of the invoice price of goods. PerkinElmer BioSignal Inc. shall not in any case be liable for special, incidental or consequential damages of any kind.

PerkinElmer, Inc.
940 Winter Street
Waltham, MA 02451 USA
P: (800) 762-4000 or
(+1) 203-925-4602
www.perkinelmer.com



For a complete listing of our global offices, visit www.perkinelmer.com/ContactUs

Copyright© 2012, PerkinElmer, Inc. All rights reserved. PerkinElmer® is a registered trademark of PerkinElmer, Inc. All other trademarks are the property of their respective owners.