

LANCE *Ultra* COL1A1 (Human) Detection Kit

Product number: TRF1371 C/M

Lot number: 2809885

Manufacturing date: November 5, 2020

Research Use Only. Not for use in diagnostic procedures.

○ Contents

○ Product Information.....	2
○ Quality Control	3
○ Analyte of Interest.....	3
○ Description of the LANCE <i>Ultra</i> Assay.....	3
○ Precautions.....	3
○ Kit Content: Reagents and Materials	4
○ Recommendations	5
○ Assay Procedure.....	6
○ Data Analysis.....	7
○ Assay Performance Characteristics	9
○ Troubleshooting Guide.....	10

○ Product Information

Application: This kit is designed for the quantitative determination of hCOL1A1 in media using a homogeneous LANCE *Ultra* assay (no wash steps).

Sensitivity: Lower Detection Limit (LDL): 33 pg/mL
Lower Limit of Quantification (LLOQ): 153 pg/mL
EC₅₀: 13.6 ng/mL

Dynamic range: Kit designed to detect hCOL1A1 between: 33– 100,000 pg/mL (Figure 1).

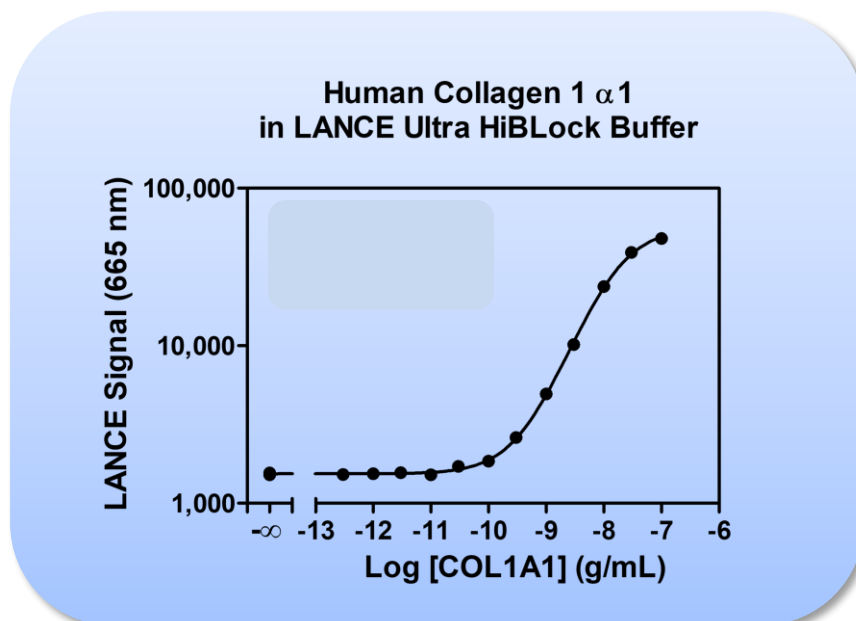


Figure 1. Typical sensitivity curves in *Ultra* HiBlock Buffer. The data was generated using a white OptiPlate™ -384 microplate and the EnVision Plate Reader equipped with TR-FRET option and a TRF laser. Performance on other plate readers may vary.

Storage: Store kit in the dark at +4°C. Store analyte at 4°C for up to 4 weeks or store long term at -20°C.

Stability: This kit is stable for at least 12 months from the manufacturing date when stored in its original packaging and the recommended storage conditions.

○ Quality Control

Lot to lot consistency is confirmed in an LANCE *Ultra* assay. EC₅₀ and LDL were measured on the, EnVision Multilabel Plate Reader equipped with TR-FRET option and a TRF laser using the protocol described in this technical data sheet. We certify that these results meet our quality release criteria. Assay performance may vary between lots and by the instrument used

EC ₅₀ :	8.585 ng/mL
LDL:	38.300 pg/mL
LLOQ	170.200 pg/mL

○ Analyte of Interest

Collagen, type I, alpha 1 (COL1A1) is known as alpha-1 type I collagen that is produced by COL1A1 gene in the connective tissues. Upon synthesis as the pro-alpha1(I) chains, two pro-alpha1(I) chains and one a pro-alpha2(I) chain combine to make up rope-like procollagen molecules that are ultimately converted into Type I collagen by enzymes outside the cells. Type I collagen is well known to maintain and support connective tissues such as cartilage, bone, tendon, and skin. Changes of COL1A1 levels in cells, connective tissues, and in biological fluids are associated with diseases like Ehlers-Danlos syndrome, osteogenesis imperfecta, and osteoporosis.

○ Description of the LANCE *Ultra* Assay

LANCE® and LANCE® (Lanthanide chelate excite) *Ultra* are our TR-FRET (time-resolved fluorescence resonance energy transfer), homogeneous (no wash) technologies. One antibody of interest is labeled with a donor fluorophore (a LANCE Europium chelate) and the second molecule is labeled with an acceptor fluorophore [ULight™ dye]. Upon excitation at 320 or 340 nm, energy can be transferred from the donor Europium chelate to the acceptor fluorophore if sufficiently close for FRET (~10 nm). This results in the emission of light at 665 nm.

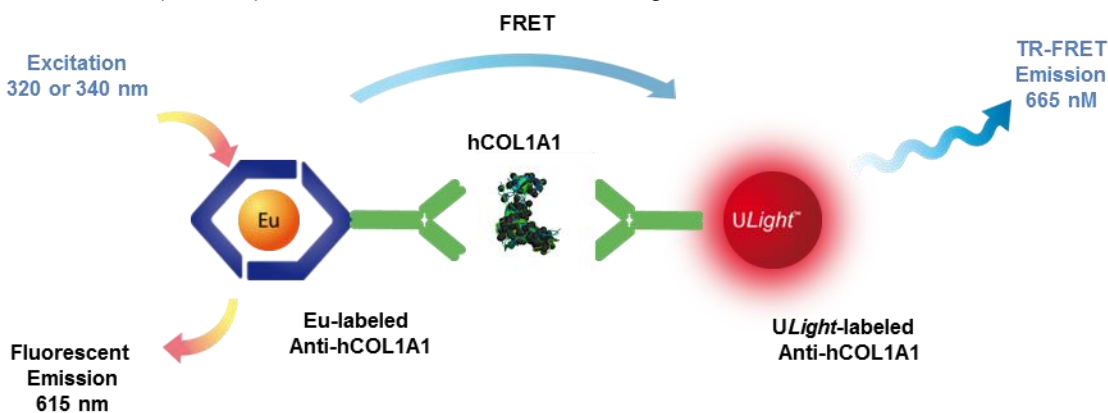


Figure 2. LANCE assay principle.

○ **Precautions**

- All blood components and biological materials should be handled as potentially hazardous.
- Some analytes are present in saliva. Take precautionary measures to avoid contamination of the reagent solutions.

○ **Kit Content: Reagents and Materials**

Kit components	TRF1371C (500 assay points ^{***})	TRF1371M (10 000 assay points ^{***})
LANCE <i>Ultra</i> Eu-labeled Anti-hCOL1A1 Antibody stored in TSA, 0.1% BSA	10 µL @ 500 nM (1 clear tube, yellow cap)	120 µL @ 500 nM (1 clear tube, orange cap)
LANCE <i>Ultra ULight</i> -labeled Anti-hCOL1A1 Antibody stored in TSA, 0.1% BSA	60 µL @ 500 nM (1 brown tube, blue cap)	1200 µL @ 500 nM (1 brown tube, green cap)
hCOL1A1 Analyte*	0.3 µg (1 tube, <u>clear</u> cap)	0.3 µg (1 tube, <u>clear</u> cap)
<i>Ultra</i> HiBlock Buffer (5X) **	2 mL, 1 small bottle	100 mL, 1 large bottle

* hCOL1A1 is supplied as a liquid at 3 µg/mL. The analyte can be stored at 4°C for up to 4 weeks or store long term at -20°C. Avoid multiple freeze-thaw cycles. One vial contains an amount of hCOL1A1 sufficient for performing 10 standard curves. Additional vials can be ordered separately (TRF1371S).

** Extra buffer can be ordered separately (cat # TRF1011C: 10 mL, cat # TRF1011F: 100 mL). 5X *Ultra* HiBlock Buffer may appear cloudy, especially after storage at cold temperature. Agitate and/or stir at room temperature to redissolve prior to dilution.

*** The number of assay points is based on an assay volume of 20 µL in 384-well assay plates using the kit components at the recommended concentrations.

Sodium azide should **not** be added to the stock reagents. High concentrations of sodium azide (> 0.001 % final in the assay) might decrease the signal.

Specific additional required reagents and materials:

The following materials are recommended:

Item	Suggested source	Catalog #
TopSeal-A PLUS Adhesive Sealing Film	PerkinElmer Inc.	6050185
EnVision Multilabel Plate Reader equipped with TR-FRET option and a TRF laser	PerkinElmer Inc.	-

○ Recommendations

General recommendations:

- The volume indicated on each tube is guaranteed for single pipetting. Multiple pipetting of the reagents may reduce the theoretical amount left in the tube.
- Centrifuge all tubes (including lyophilized analyte) before use to improve recovery of content (2000g, 10-15 sec).
- Re-suspend all reagents by vortexing before use.
- Use Milli-Q® grade H₂O (18 MΩ•cm) to dilute Buffer.
- When diluting the standard or samples, change tips between each standard or sample dilution. When loading reagents in the assay microplate, change tips between each standard or sample addition and after each set of reagents.
- When reagents are added to the microplate, make sure the liquids are at the bottom of the well.
- Small volumes may be prone to evaporation. It is recommended to cover microplates with TopSeal-A Adhesive Sealing Films to reduce evaporation during incubation. LANCE Ultra TR-FRET assays cannot be read with the TopSeal-A Film attached. Please remove before reading.
- LANCE signal is detected using a VICTOR X, ViewLux, EnVision or EnSpire Multilabel Reader equipped with the TR-FRET. Use an excitation wavelength of 320 or 340 nm to excite the LANCE Europium chelate. We recommend you read this assay in dual emission mode, detecting both the emission from the Europium donor fluorophore at 615 nm, and the acceptor fluorophore (at 665 nm for *ULight* dye). The raw FRET signal at 665 nm can be used to process your data.
- Signal will vary with temperature and incubation time. For consistent results, identical incubation times and temperature should be used for each plate.
- The standard curves shown in this technical data sheet are provided for information only. A standard curve must be generated for each experiment. The standard curve should be performed in *Ultra* HiBlock Buffer

○ Assay Procedure

IMPORTANT: PLEASE READ THE RECOMMENDATIONS BELOW BEFORE USE

- The protocol described below is an **example** for generating one standard curve in a 20 µL final assay volume (48 wells, triplicate determinations) and 452 samples. The protocols also include testing samples in 384 well plates. If different amounts of samples are tested, the volumes of all reagents must be adjusted accordingly, as shown in the table below. ***These calculations do not include excess reagents to account for losses during transfer of solutions or dead volumes.
- The standard dilution protocol is provided for information only. As needed, the number of replicates or the range of concentrations covered can be modified.
- Use of four background points in triplicate (12 wells) is recommended when LDL/LLOQ is calculated. One background point in triplicate (3 wells) can be used when LDL/LLOQ is not calculated.

Format	# of data points	Volume				Plate recommendation
		Final	Sample	Eu-Antibody	ULight Antibody	
TRF1371C	250	40 µL	30 µL	5 µL	5 µL	White OptiPlate-96 (cat # 6005290) White ½ AreaPlate-96 (cat # 6005560)
	500	20 µL	15 µL	2.5 µL	2.5 µL	White ½ AreaPlate-96 (cat # 6005560) White OptiPlate-384 (cat # 6007290)
	1 250	8 µL	6 µL	1 µL	1 µL	ProxiPlate™-384 Plus (cat # 6008280) White OptiPlate-384 (cat # 6007290)
	2 500	4 µL	3 µL	0.5 µL	0.5 µL	White OptiPlate-1536 (cat # 6004290)
TRF1371M	10 000	20 µL	15 µL	2.5 µL	2.5 µL	White ½ AreaPlate-96 (cat # 6005560) White OptiPlate-384 (cat # 6007290)
	25 000	8 µL	6 µL	1 µL	1 µL	ProxiPlate-384 Plus (cat # 6008280) White OptiPlate-384 (cat # 6007290)
	50 000	4 µL	3 µL	0.5 µL	0.5 µL	White OptiPlate-1536 (cat # 6004290)

General Protocol (2-step protocol): Dilute standards, samples, and assay components in 1X *Ultra* HiBlock Buffer.

Each protocol described below is designed for 500 assay points including one standard curve (48 wells) and samples (452 wells).

Standard Preparation:

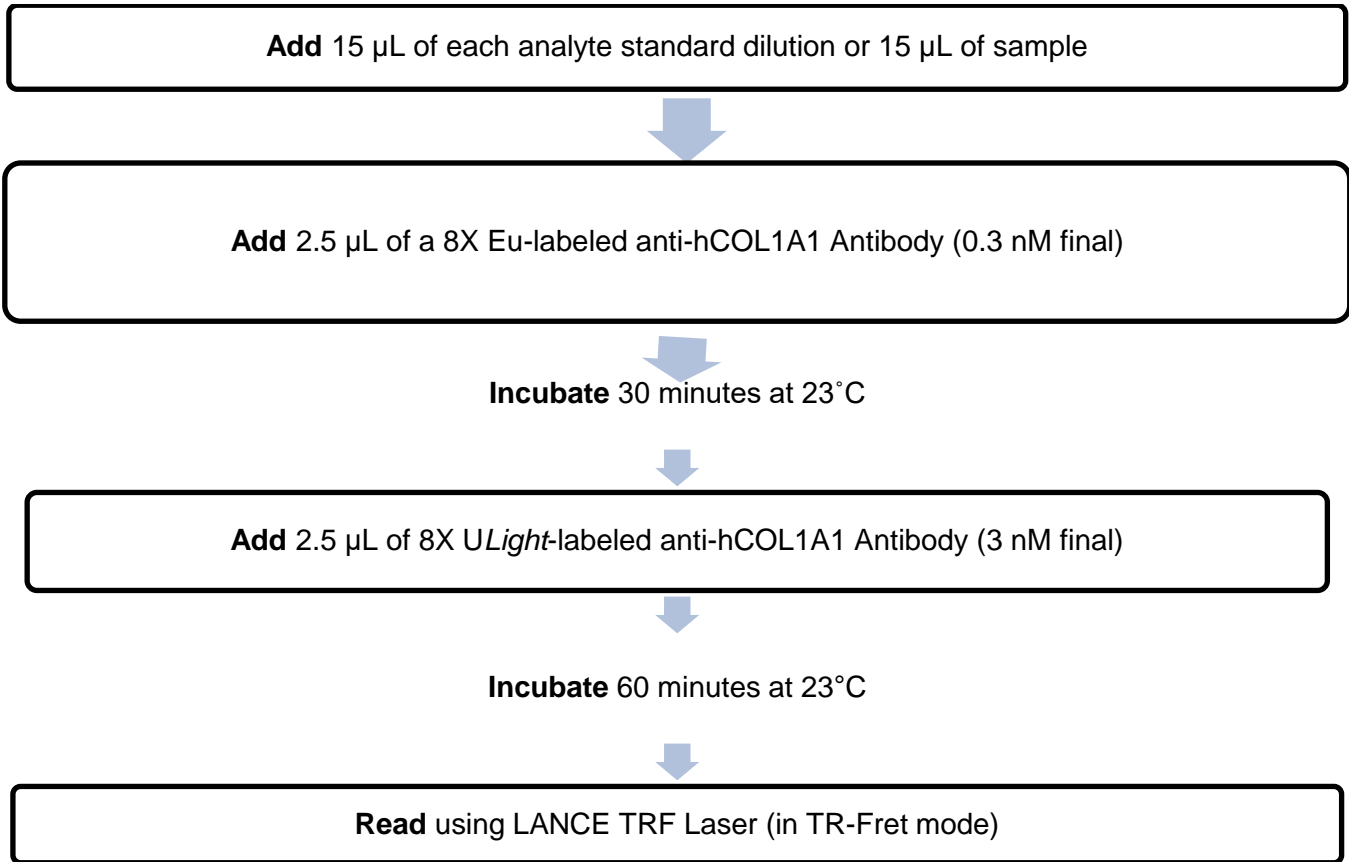
- 1) Preparation of 1X *Ultra* HiBlock Buffer:
 - a. Add 2 mL of 5X *Ultra* HiBlock Buffer to 8 mL H₂O.
- 2) Preparation of hCOL1A1 analyte standard dilutions:
 - a. hCOL1A1 analyte is provided at 3 µg/mL.
 - b. Prepare standard dilutions as follows (change tip between each standard dilution):

Tube	Vol. of hCOL1A1 (µL)	Vol. of diluent (µL) *	[hCOL1A1] in standard curve	
			(g/mL in 15 µL)	(pg/mL in 15 µL)
A	10 µL of reconstituted hCOL1A1	90	3.00E-07	300 000
B	30 µL of tube A	60	1.00E-07	100 000
C	30 µL of tube B	70	3.00E-08	30 000
D	30 µL of tube C	60	1.00E-08	10 000
E	30 µL of tube D	70	3.00E-09	3 000
F	30 µL of tube E	60	1.00E-09	1 000
G	30 µL of tube F	70	3.00E-10	300
H	30 µL of tube G	60	1.00E-10	100
I	30 µL of tube H	70	3.00E-11	30
J	30 µL of tube I	60	1.00E-11	10
K	30 µL of tube J	70	3.00E-12	3
L	30 µL of tube K	60	1.00E-12	1
M ** (background)	0	100	0	0
N ** (background)	0	100	0	0
O ** (background)	0	100	0	0
P ** (background)	0	100	0	0

* At low concentrations of analyte, a significant amount of analyte can bind to the vial. Therefore, load the analyte standard dilutions in the assay microplate within 60 minutes of preparation.

** Four background points in triplicate (12 wells) are used when LDL is calculated. If LDL does not need to be calculated, one background point in triplicate can be used (3 wells).

- 3) Preparation of 8X Eu-labeled anti-hCOL1A1 Antibody (2.4 nM)
 - a. Add 6 µL of 500 nM Eu-labeled anti-hCOL1A1 Antibody to 1244 µL of 1X *Ultra* HiBlock Buffer.
 - b. Prepare just before use.
- 4) Preparation of 8X *ULight* labeled anti-hCOL1A1 Antibody (24 nM):
 - a. Add 60 µL of 500 nM *ULight* labeled anti-hCOL1A1 Antibody to 1190 µL of 1X *Ultra* HiBlock Buffer.
 - b. Prepare just before use.
- 5) In a white Optiplate (384 wells):



Important: LANCE signal is detected using an EnVision Multilabel Reader equipped with the TR-FRET. Use an excitation wavelength of 320 or 340 nm to excite the LANCE Europium chelate. We recommend you read this assay in dual emission mode, detecting both the emission from the Europium donor fluorophore at 615 nm, and the acceptor fluorophore (at 665 nm for *ULight* dye).

○ Data Analysis

- Calculate the average count value for the background wells.
- Generate a standard curve by plotting the LANCE counts versus the concentration of analyte. A log scale can be used for either or both axes. No additional data transformation is required.
- Analyze data according to a nonlinear regression using the 4-parameter logistic equation (sigmoidal dose-response curve with variable slope) and a $1/Y^2$ data weighting (the values at maximal concentrations of analyte after the hook point should be removed for correct analysis).
- The LDL is calculated by interpolating the average background counts (12 wells without analyte) + 2 x standard deviation value (average background counts + (2xSD)) on the standard curve.
- The LLOQ as measured here is calculated by interpolating the average background counts (12 wells without analyte) + 10 x standard deviation value (average background counts + (10xSD)) on the standard curve. Alternatively, the true LLOQ can be determined by spiking known concentrations of analyte in the matrix and measuring the percent recovery, and then determining the minimal amount of spiked analyte that can be quantified within a given limit (usually +/- 20% or 30% of the real concentration).
- Read from the standard curve the concentration of analyte contained in the samples.
- If samples have been diluted, the concentration read from the standard curve must be multiplied by the dilution factor.

○ Assay Performance Characteristics

LANCE Ultra assay performance described below was determined using the 2 step protocol.

Assay Sensitivity

The LDL and LLOQ were calculated as described above. The values correspond to the lowest concentration of analyte that can be detected in a volume of 15 µL using the recommended assay conditions.

LDL (pg/mL)	LLOQ (pg/mL)	Buffer	# of experiments
33	153	Ultra HiBlock	9
142	589	DMEM	6
187	709	RPMI	6

Assay Precision:

The following assay precision data were calculated from the three independent assays using two different kit lots. In each lot, the analytes were prepared in *Ultra* HiBlock Buffer. Each assay consisted of one standard curve comprising 12 data points in triplicate and 12 background wells containing no analyte. The assays were performed in a 384-well format using *Ultra* HiBlock Buffer.

Intra-assay precision:

The intra-assay precision was determined using 3 independent experiments for a total of 16 independent determinations in triplicate. CV% were calculated for each individual experiment then averaged. Shown is the average intra-experimental CV%.

hCOL1A1 (CV%)	Buffer
3	Ultra HiBlock
3	DMEM
3	RPMI

Inter-assay precision:

The inter-assay precision was determined using the data across 3 independent experiments with 16 measurements in triplicate. CV% was calculated by comparing the same measurement in each experiment. The CV% for all 16 measurements were then averaged. Shown is the inter-experimental CV%.

hCOL1A1 (CV%)	Buffer
9	Ultra HiBlock
8	DMEM
8	RPMI

Spike Recovery:

In four experiments, three known concentrations of hCOL1A1 were spiked into 3 separate media and performed triplicate. The spiked samples were referenced to the hCOL1A1 analyte curve produced in the corresponding media.

Spiked hCOL1A1 (ng/mL)	% Recovery		
	Ultra HiBlock Buffer	DMEM + 10% FBS	RPMI + 10% FBS
3	89	111	99
1	80	101	119
0.3	94	105	95

○ Troubleshooting Guide

You will find detailed recommendations for common situations you might encounter with your LANCE *Ultra* Assay kit at:

<http://www.perkinelmer.com/Resources/TechnicalResources/ApplicationSupportKnowledgebase/LANCE/lance.xhtml>

FOR RESEARCH USE ONLY. NOT FOR USE IN DIAGNOSTIC PROCEDURES.

This product is not for resale or distribution except by authorized distributors.

LIMITED WARRANTY: PerkinElmer BioSignal Inc. warrants that, at the time of shipment, the products sold by it are free from defects in material and workmanship and conform to specifications which accompany the product. PerkinElmer BioSignal Inc. makes no other warranty, express or implied with respect to the products, including any warranty of merchantability or fitness for any particular purpose. Notification of any breach of warranty must be made within 60 days of receipt unless otherwise provided in writing by PerkinElmer BioSignal Inc. No claim shall be honored if the customer fails to notify PerkinElmer BioSignal Inc. within the period specified. The sole and exclusive remedy of the customer for any liability of PerkinElmer BioSignal Inc. of any kind including liability based upon warranty (express or implied whether contained herein or elsewhere), strict liability contract or otherwise is limited to the replacement of the goods or the refunds of the invoice price of goods. PerkinElmer BioSignal Inc. shall not in any case be liable for special, incidental or consequential damages of any kind.

PerkinElmer, Inc.
940 Winter Street
Waltham, MA 02451 USA
P: (800) 762-4000 or
(+1) 203-925-4602
www.perkinelmer.com



For a complete listing of our global offices, visit www.perkinelmer.com/ContactUs

Copyright© 2012, PerkinElmer, Inc. All rights reserved. PerkinElmer® is a registered trademark of PerkinElmer, Inc. All other trademarks are the property of their respective owners.