

RBHERGM: hERG K⁺ Channel (Cloned human ether-a-gogo related gene 1 potassium channel)

SPECIFIC LOT DATA: Lot 360-087-A

Receptor Concentration (B_{max}): 0.53 pmol/mg protein

K_d for [¹²⁵I]-BeKm-1 binding: 0.046nM

Volume: 0.4 ml per 400 microassay size vial

Protein Concentration: 2.74 mg/ml

PACKAGING: Membranes suspended in 50 mM Tris-HCl (pH 7.4), 10% sucrose.

RECOMMENDED ASSAY PROCEDURE:

Thawing: Thaw vials rapidly; dilute with incubation buffer; homogenize. Keep on ice.

Incubation buffer: 20 mM Hepes-Tris, pH 7.2, 100 μM KCl and 0.1% BSA.

Note: To prepare incubation buffer, use non pH-adjusted Hepes at a final concentration of 20 mM, add KCl and BSA and then adjust to pH 7.2 with a few drops of 1 M non pH-adjusted TRIS.

Binding protocol: Incubate 2.74 μg of membranes (150 μl of a 1:150 dilution in incubation buffer), buffer and [¹²⁵I]-BeKm-1 in a total volume of 200 μl.

Add the assay components in the following order:

- 25 μl 1 μM BeKm-1 (0.125 μM final; for non-specific binding);
or 25 μl incubation buffer (for total binding);
- 25 μl [¹²⁵I]-BeKm-1 at the appropriate concentration (see graphs on reverse);
- 150 μl diluted membranes.

Incubate 60 min at 27°C.

Filter over GF/C filter (presoaked in 0.3% polyethylenimine) and wash filter 9× with 0.5 ml ice-cold 20 mM Tris-HCl, pH 7.3 @ 4°C and 150 mM NaCl.

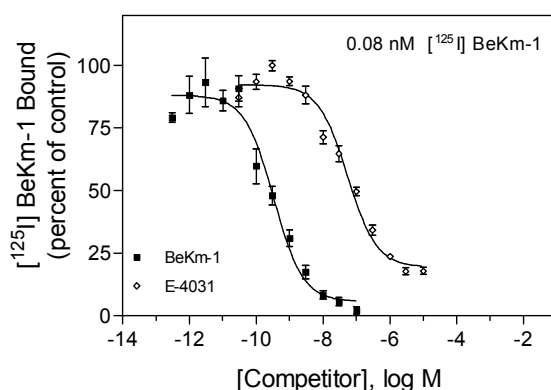
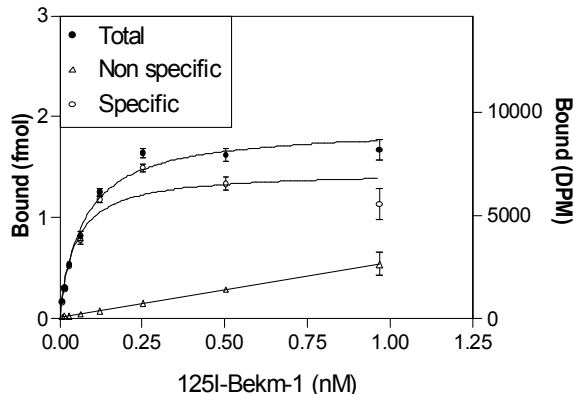
STABILITY AND STORAGE RECOMMENDATIONS: Storage at -80°C is recommended. Long term stability is currently under investigation. Repeated freeze-thawing of this product is not recommended.

ORIGIN: Human ERG1 K⁺ Channel expressed in HEK-293 cells.

- REFERENCES:**
- GenBank accession number: NM_000238 (KCNH2, transcript variant 1)
 - Trudeau, M.C. *et al.*, Science **269**: 92-95 (1995)
 - Angelo K. *et al.*, Pflugers Arch. **447**: 55-63 (2003)
 - Chiu *et al.*, J. Pharmacol. Sci. **95**: 311-319 (2004)
 - Finlayson *et al.*, Eur. J. Pharmacol. **430**: 147-148 (2001)

[¹²⁵I]-BeKm-1 binding to hERG K⁺ Channel

Lot No : 360-087-A



Affinity Constants for hERG K⁺ Channel

Lot 360-087-A

COMPETITOR*	Ki (nM)
BeKm-1	0.20
E-4031	32

*Even though two sites can be observed occasionally with some ligands, the data presented is derived from single site fitting.

LIMITED WARRANTY: PerkinElmer BioSignal Inc., a subsidiary of PerkinElmer Life and Analytical Sciences, warrants that, at the time of shipment, the products sold by it are free from defects in material and workmanship and conform to specifications which accompany the product. PerkinElmer BioSignal Inc. makes no other warranty, express or implied with respect to the products, including any warranty of merchantability or fitness for any particular purpose. Notification of any breach of warranty must be made within 60 days of receipt unless provided in writing by PerkinElmer BioSignal Inc. No claim shall be honored if the customer fails to notify PerkinElmer BioSignal Inc. within the period specified. The sole and exclusive remedy of the customer for any liability of PerkinElmer BioSignal Inc. of any kind including liability based upon warranty (express or implied whether contained herein or elsewhere), strict liability contract or otherwise is limited to the replacement of the goods or the refunds of the invoice price of goods. PerkinElmer BioSignal Inc. shall not in any case be liable for special, incidental or consequential damages of any kind.

Worldwide Headquarters: PerkinElmer Life and Analytical Sciences, 549 Albany Street, Boston, MA 02118-2512 USA (800) 551-2121

European Headquarters: PerkinElmer Life and Analytical Sciences, Imperiastraat 8, BE-1930 Zaventem Belgium

Technical Support: in Europe:techsupport.europe@perkinelmer.com in US and Rest of World:techsupport@perkinelmer.com

Belgium: Tel: 0800 94 540 • **France:** Tel:0800 90 77 62 • **Netherlands:** Tel: 0800 02 23 042 • **Germany:** Tel: 0800 1 81 00 32 • **United Kingdom:** Tel: 0800 89 60 46 • **Switzerland:** Tel:0800 55 50 27 • **Italy:** Tel: 800 79 03 10 • **Sweden:** Tel:020 79 07 35 • **Norway:** Tel:800 11 947 • **Denmark:** Tel:80 88 3477 • **Spain:** Tel:900 973 255