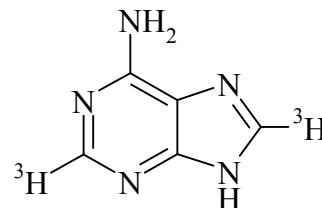


Research Use Only. Not for use in diagnostic procedures.

**ADENINE, [2,8- $^3\text{H}$ ]-****Product Number: NET063****LOT SPECIFIC INFORMATION**

Lot Number:	<u>2572151</u>
Specific Activity:	<u>41.9</u> Ci/mmol
	<u>1550</u> GBq/mmol
Production Date:	<u>4 Sept 2019</u>

M.W. 135  
 $\text{C}_5\text{H}_5\text{N}_5$ **PACKAGING:** 1.0 mCi/ml (37 MBq/ml) in aqueous solution, steri-packaged.**STABILITY AND STORAGE RECOMMENDATIONS:** When adenine, [2,8- $^3\text{H}$ ]- is stored at 5°C in its original solvent and at its original concentration, the rate of decomposition is initially 2% per month from date of purification. Stability is nonlinear and not correlated to isotope half-life. Lot to lot variation may occur.

- Aqueous solutions of adenine, [2,8- $^3\text{H}$ ]- shipped from stock are stored no longer than 3 months. A 70% ethanol solution is recommended as a solvent if the compound is to be stored longer than 3 months as the material has been found to be much more stable in this solvent.

**SPECIFIC ACTIVITY RANGE:** >15 Ci/mmol (555 GBq/mmol)**RADIOCHEMICAL PURITY:** This product was initially found to be greater than 97% when determined by the following methods. The rate of decomposition can accelerate. It is advisable to check purity prior to use:High pressure liquid chromatography on a C18 column using the following mobile phase:  
1% triethylamine acetate pH4 : acetonitrile, (9:1).**HAZARD INFORMATION:** WARNING: This product contains a chemical known to the state of California to cause cancer.PerkinElmer, Inc.  
549 Albany Street  
Boston, MA 02118 USA  
P: (800) 762-4000 or (+1) 203-925-4602  
[www.perkinelmer.com/nenradiochemicals](http://www.perkinelmer.com/nenradiochemicals)For a complete listing of our global offices, visit [www.perkinelmer.com/ContactUs](http://www.perkinelmer.com/ContactUs)  
Copyright ©2010, PerkinElmer, Inc. All rights reserved. PerkinElmer® is a registered trademark of PerkinElmer, Inc.  
All other trademarks are the property of their respective owners.