

## Total Bovine Immunoglobulin G (bIgG) AlphaLISA Immunoassay Kit

Product number: AL530 HV/C/F

Lot number: 2560935

Manufacturing date: March 27, 2019

Research Use Only. Not for use in diagnostic procedures.

### Contents

|  | Page |
|--|------|
| Product Information.....                 | 2    |
| Quality Control.....                     | 2    |
| Analyte of Interest.....                 | 3    |
| Description of the AlphaLISA Assay ..... | 3    |
| Precautions.....                         | 3    |
| Kit content: Reagents and Materials..... | 4    |
| General Recommendations.....             | 5    |
| Assay Procedure.....                     | 5    |
| Data Analysis.....                       | 9    |
| Assay Performance Characteristics.....   | 9    |
| Troubleshooting Guide.....               | 11   |

## Product Information

- Application:** This kit is designed for the quantitative determination of Total Bovine IgG in buffer, using a homogeneous AlphaLISA assay (no wash steps). The assay shows negligible cross-reactivity with other Bovine Igs and IgGs from other species.
- Sensitivity:** Lower Detection Limit (LDL):  $0.53 \pm 0.4$  ng/mL  
Lower Limit of Quantification (LLOQ): 1.7 ng/mL  
 $EC_{50}$ :  $183 \pm 77$  ng/mL
- Dynamic range:** 1.5 - 3 000 ng/mL (Figure 1).

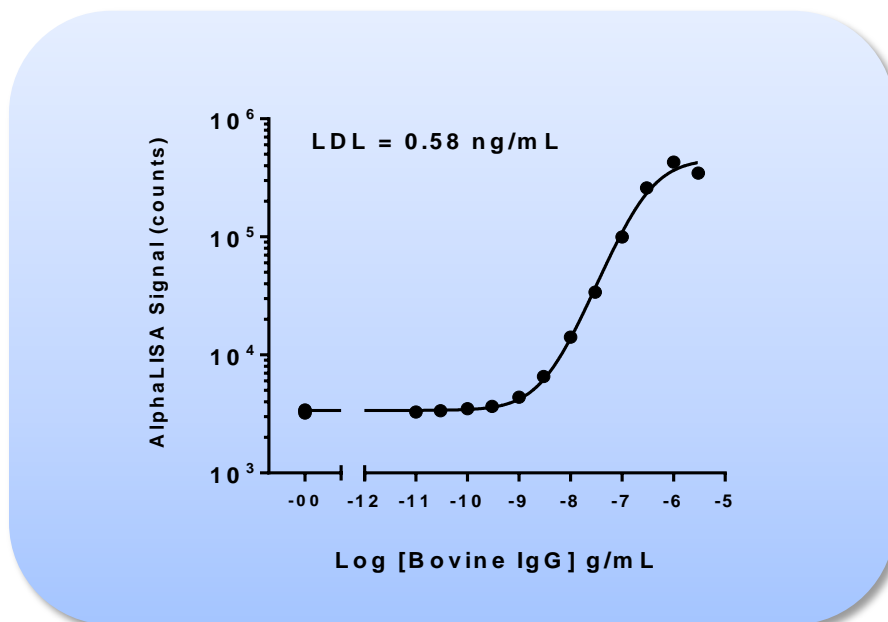


Figure 1. Typical sensitivity curves in AlphaLISA Bovine Immunoassay Buffer. The data was generated using a white Optiplate™-384 microplate and the EnVision® Multilabel Plate Reader with Alpha option 2102.

- Storage:** Store kit in the dark at +4°C. Store reconstituted analyte at -20°C.
- Stability:** This kit is stable for at least 6 months from the manufacturing date when stored in its original packaging and the recommended storage conditions. Note: Once reconstituted, the Bovine IgG analyte is stable for at least 18 months when stored at -20°C.

## Quality Control

Lot to lot consistency is confirmed in an AlphaLISA assay. Maximum and minimum signals,  $EC_{50}$  and LDL were measured on the EnVision Multilabel Plate Reader with Alpha option using the protocol described in this technical data sheet. We certify that these results meet our quality release criteria. Maximum counts may vary between bead lots and the instrument used, with no impact on LDL measurement.

- $EC_{50}$ : 120.2 ng/mL  
LDL: 0.17 ng/mL  
LLOQ: 0.52 ng/mL

## Analyte of Interest

There are five classes of mammalian immunoglobulins: IgA, IgD, IgE, IgM, and IgG. IgG is the most abundant immunoglobulin and is equally distributed in blood and tissue. In bovine, the IgG class is further divided into two subclasses: IgG1 and IgG2. The general immunoglobulin structure is composed of four polypeptide chains, two heavy and two light chains linked together and to each other by disulfide bonds, creating a tetrameric quaternary structure. IgG is involved in response to a foreign antigen. The presence of IgG usually signifies a mature antibody response. IgG has a molecular weight of about 150 kDa, it can bind to many pathogens and also plays an important role in antibody-dependent cell-mediated cytotoxicity. Typically, bovine serum and plasma samples contain about 17 to 27 mg/ml of IgG.

## Description of the AlphaLISA Assay

AlphaLISA technology allows the detection of molecules of interest in buffer, cell culture media, serum and plasma in a highly sensitive, quantitative, reproducible and user-friendly mode. In an AlphaLISA assay, a Biotinylated Anti-Analyte Antibody binds to the Streptavidin-coated Alpha Donor beads, while another Anti-Analyte Antibody is conjugated to AlphaLISA Acceptor beads. In the presence of the analyte, the beads come into close proximity. The excitation of the Donor beads provokes the release of singlet oxygen molecules that triggers a cascade of energy transfer in the Acceptor beads, resulting in a sharp peak of light emission at 615 nm (Figure 2).

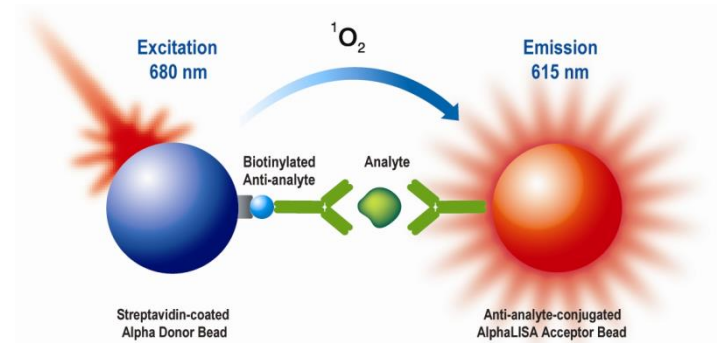


Figure 2. AlphaLISA Assay principle.

## Precautions

- The AlphaScreen<sup>®</sup> Donor beads are light-sensitive. All the other assay reagents can be used under normal light conditions. All Alpha assays using the Donor beads should be performed under subdued laboratory lighting (< 100 lux). Green filters (LEE 090 filters (preferred) or Roscolux filters #389 from Rosco) can be applied to light fixtures.
- All blood components and biological materials should be handled as potentially hazardous. The analyte included in this kit is from a Bovine source.
- Some analytes are present in saliva. Take precautionary measures to avoid contamination of the reagent solutions.
- The Biotinylated Anti-Analyte Antibody contains sodium azide. Contact with skin or inhalation should be avoided.

## Kit Content: Reagents and Materials

| Kit components  | AL530HV<br>(100 assay points***)                     | AL530C<br>(500 assay points***)                      | AL530F<br>(5 000 assay points***)                    |
|---|--|--|--|
| AlphaLISA Anti-Bovine IgG Acceptor beads stored in PBS, 0.05% Proclin-300, pH 7.2                   | 20 µL @ 5 mg/mL<br>(1 brown tube, <u>white</u> cap)  | 50 µL @ 5 mg/mL<br>(1 brown tube, <u>white</u> cap)  | 500 µL @ 5 mg/mL<br>(1 brown tube, <u>white</u> cap) |
| Streptavidin (SA)-coated Donor beads stored in 25 mM HEPES, 100 mM NaCl, 0.05% Proclin-300, pH 7.4  | 100 µL @ 5 mg/mL<br>(1 brown tube, <u>black</u> cap) | 200 µL @ 5 mg/mL<br>(1 brown tube, <u>black</u> cap) | 2 mL @ 5 mg/mL<br>(2 brown tubes, <u>black</u> caps) |
| Biotinylated Antibody Anti-Bovine IgG stored in PBS, 0.1% Tween-20, 0.05% NaN <sub>3</sub> , pH 7.4 | 20 µL @ 500 nM<br>(1 tube, <u>black</u> cap)         | 50 µL @ 500 nM<br>(1 tube, <u>black</u> cap)         | 500 µL @ 500 nM<br>(1 tube, <u>black</u> cap)        |
| AlphaLISA Bovine IgG (3 µg), lyophilized analyte *  | 1 tube, <u>clear</u> cap                             | 1 tube, <u>clear</u> cap                             | 1 tube, <u>clear</u> cap                             |
| AlphaLISA Bovine Immunoassay Buffer (10X)   | 2 mL, 1 small bottle                                 | 10 mL, 1 small bottle                                | 100 mL, 1 large bottle                               |

\* Reconstitute Bovine IgG in 100 µL Milli-Q® grade H<sub>2</sub>O. The reconstituted analyte should be used within 60 minutes or aliquoted into screw-capped polypropylene vials and stored at -20°C for further experiments. Avoid multiple freeze-thaw cycles. It has been demonstrated that reconstituted Bovine IgG is stable for at least 18 months at -20°C. One vial contains an amount of Bovine IgG sufficient for performing 10 standard curves. Additional vials can be ordered separately (cat # AL530S).

\*\*\* The number of assay points is based on an assay volume of 100 µL in 96-well plates (AL530HV) or 50 µL in 96- or 384-well assay plates using the kit components at the recommended concentrations.

Sodium azide should **not** be added to the stock reagents. High concentrations of sodium azide (> 0.001 % final in the assay) might decrease the AlphaLISA signal. Note that sodium azide from the Biotinylated Antibody stock solution will not interfere with the AlphaLISA signal (0.0001% final in the assay).

### Specific additional required reagents and materials:

The following materials are recommended:

| Item                             | Suggested source | Catalog # |
|----------------------------------|------------------|-----------|
| TopSeal™-A Adhesive Sealing Film | PerkinElmer Inc. | 6050195   |
| EnVision®-Alpha Reader           | PerkinElmer Inc. | -         |

## Recommendations

### General recommendations:

- The volume indicated on each tube is guaranteed for single pipetting. Multiple pipetting of the reagents may reduce the theoretical amount left in the tube. To minimize loss when pipetting beads, it is preferable not to pre-wet the tip.
- Centrifuge all tubes (including lyophilized analyte) before use to improve recovery of content (2000g, 10-15 sec). Re-suspend all reagents by vortexing before use.
- Use Milli-Q® grade H<sub>2</sub>O (18 MΩ•cm) to dilute 10X AlphaLISA Bovine Immunoassay Buffer to reconstitute the lyophilized analyte.
- When diluting the standard or samples, change tips between each standard or sample dilution. When loading reagents in the assay microplate, change tips between each standard or sample addition and after each set of reagents.
- When reagents are added to the microplate, make sure the liquids are at the bottom of the well.
- Small volumes may be prone to evaporation. It is recommended to cover microplates with TopSeal-A Adhesive Sealing Films to reduce evaporation during incubation. Microplates can be read with the TopSeal-A Film.
- The AlphaLISA signal is detected with an EnVision Multilabel Reader equipped with the Alpha option using the AlphaScreen standard settings (e.g. Total Measurement Time: 550 ms, Laser 680 nm Excitation Time: 180 ms, Mirror: D640as, Emission Filter: M570w, Center Wavelength 570 nm, Bandwidth 100 nm, Transmittance 75%).
- AlphaLISA signal will vary with temperature and incubation time. For consistent results, identical incubation times and temperature should be used for each plate.
- The standard curves shown in this technical data sheet are provided for information only. A standard curve must be generated for each experiment.

## Assay Procedure

### IMPORTANT: PLEASE READ THE RECOMMENDATIONS BELOW BEFORE USE

- The protocol described below is an example for generating one standard curve in a 50 µL final assay volume (48 wells, triplicate determinations). The protocols also include testing samples in 452 wells. If a different amount of samples are tested, the volumes of all reagents have to be adjusted accordingly, as shown in the table below. These calculations do not include excess reagent to account for losses during transfer of solutions or dead volumes.
- The standard dilution protocol is provided for information only. As needed, the number of replicates or the range of concentrations covered can be modified.
- Use of four background points in triplicate (12 wells) is recommended when LDL/LLOQ is calculated. One background point in triplicate (3 wells) can be used when LDL/LLOQ is not calculated.

| Format  | # of data points | Volume |        |                                       |                | Plate recommendation  |
|---------|------------------|--------|--------|---------------------------------------|----------------|---|
|         |                  | Final  | Sample | AlphaLISA beads / Biotin Antibody MIX | SA-Donor beads |   |
| AL530HV | 100              | 100 µL | 10 µL  | 40 µL                                 | 50 µL          | White OptiPlate-96 (cat # 6005290)<br>White ½ AreaPlate-96 (cat # 6005560)  |
| AL530C  | 250              | 100 µL | 10 µL  | 40 µL                                 | 50 µL          | White OptiPlate-96 (cat # 6005290)<br>White ½ AreaPlate-96 (cat # 6005560)  |
|         | 500              | 50 µL  | 5 µL   | 20 µL                                 | 25 µL          | White ½ AreaPlate-96 (cat # 6005560)<br>White OptiPlate-384 (cat # 6007290)<br>Light gray AlphaPlate™-384 (cat # 6005350) |
|         | 1 250            | 20 µL  | 2 µL   | 8 µL                                  | 10 µL          | Light gray AlphaPlate-384 (cat # 6005350)<br>ProxiPlate™-384 Plus (cat # 6008280)<br>White OptiPlate-384 (cat # 6007290)  |
|         | 2 500            | 10 µL  | 1 µL   | 4 µL                                  | 5 µL           | Light gray AlphaPlate-1536 (cat # 6004350)  |
| AL530F  | 5 000            | 50 µL  | 5 µL   | 20 µL                                 | 25 µL          | White ½ AreaPlate-96 (cat # 6005560)<br>White OptiPlate-384 (cat # 6007290)<br>Light gray AlphaPlate-384 (cat # 6005350)  |
|         | 12 500           | 20 µL  | 2 µL   | 8 µL                                  | 10 µL          | Light gray AlphaPlate-384 (cat # 6005350)<br>ProxiPlate-384 Plus (cat # 6008280)<br>White OptiPlate-384 (cat # 6007290)   |
|         | 25 000           | 10 µL  | 1 µL   | 4 µL                                  | 5 µL           | Light gray AlphaPlate-1536 (cat # 6004350)  |

The 2-step Quick Protocol described below is for 500 assay points including one standard curve (48 wells) and samples (452 wells).

1) Preparation of 1X AlphaLISA Bovine Immunoassay Buffer:

- Add 10 mL of 10X AlphaLISA Bovine Immunoassay Buffer to 90 mL H<sub>2</sub>O.

2) Preparation of blgG analyte standard dilutions:

- Bovine IgG analyte is provided at 3 µg in lyophilized form. Reconstitute with 100 µL H<sub>2</sub>O to create a 30 µg/mL solution. The first point of the curve is 3 µg/mL so a 10 fold dilution is required. Prepare standard dilutions as follows (change tip between each standard dilution):

| Tube              | Vol. of Bovine IgG (µL) | Vol. of diluent (µL) * | [Bovine IgG] in standard curve |                 |
|-------------------|-------------------------|------------------------|--------------------------------|-----------------|
|                   |                         |                        | (g/mL in 5 µL)                 | (pg/mL in 5 µL) |
| A                 | 10 µL of provided IgG   | 90                     | 3.00E-06                       | 3000000         |
| B                 | 60 µL of tube A         | 120                    | 1.00E-06                       | 1000000         |
| C                 | 60 µL of tube B         | 140                    | 3.00E-07                       | 300000          |
| D                 | 60 µL of tube C         | 120                    | 1.00E-07                       | 100000          |
| E                 | 60 µL of tube D         | 140                    | 3.00E-08                       | 30000           |
| F                 | 60 µL of tube E         | 120                    | 1.00E-08                       | 10000           |
| G                 | 60 µL of tube F         | 140                    | 3.00E-09                       | 3000            |
| H                 | 60 µL of tube G         | 120                    | 1.00E-09                       | 1000            |
| I                 | 60 µL of tube H         | 140                    | 3.00E-10                       | 300             |
| J                 | 60 µL of tube I         | 120                    | 1.00E-10                       | 100             |
| K                 | 60 µL of tube J         | 140                    | 3.00E-11                       | 30              |
| L                 | 60 µL of tube K         | 120                    | 1.00E-11                       | 10              |
| M ** (background) | 0                       | 100                    | 0                              | 0               |
| N ** (background) | 0                       | 100                    | 0                              | 0               |
| O ** (background) | 0                       | 100                    | 0                              | 0               |
| P ** (background) | 0                       | 100                    | 0                              | 0               |

\* Dilute standards in diluent (e.g. 1X AlphaLISA Bovine Immunoassay Buffer).

At low concentrations of analyte, a significant amount of analyte can bind to the vial. Therefore, load the analyte standard dilutions in the assay microplate within 60 minutes of preparation.

\*\* Four background points in triplicate (12 wells) are used when LDL is calculated. If LDL does not need to be calculated, one background point in triplicate can be used (3 wells).

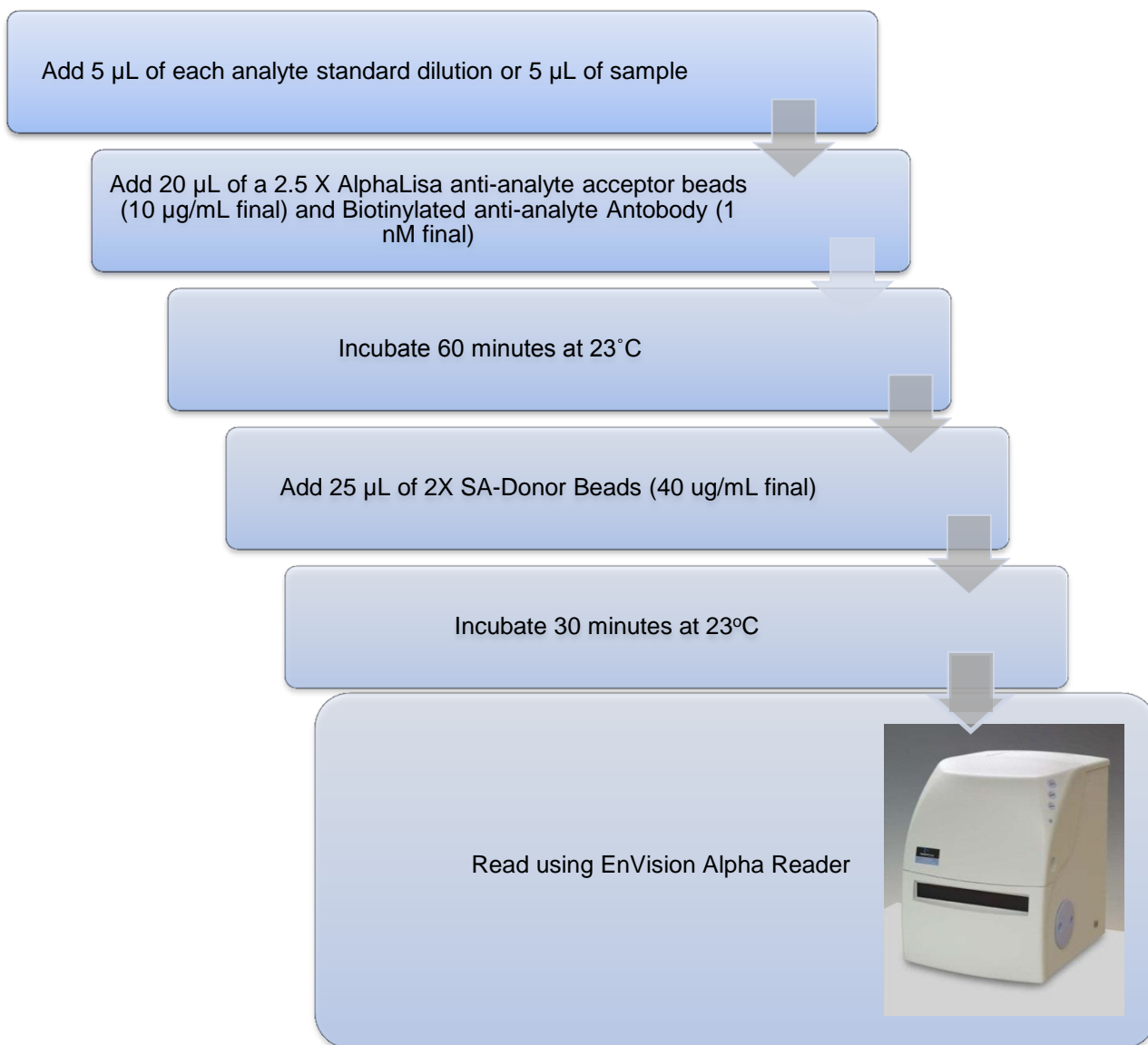
3) Preparation of 2.5X AlphaLISA Anti-bovine IgG Acceptor beads + Biotinylated Anti bovine IgG Antibody MIX (25 µg/mL / 2.5 nM) mix:

- Add 50 µL of 5 mg/mL AlphaLISA Anti bovine IgG Acceptor beads and 50 µL of 500 nM Biotinylated Anti bovine IgG to 9900 µL of 1X AlphaLISA Bovine Immunoassay Buffer. **Prepare just before use.**

4) Preparation of 2X Streptavidin (SA) Donor beads (80 µg/mL): Keep the beads under subdued laboratory lighting.

- Add 200 µL of 5 mg/mL SA-Donor beads to 12 300 µL of 1X AlphaLISA Bovine Immunoassay Buffer. **Prepare just before use.**

5) In a 96- or 384-well microplate:



## Data Analysis

- Calculate the average count value for the background wells.



- Generate a standard curve by plotting the AlphaLISA counts versus the concentration of analyte. A log scale can be used for either or both axes. No additional data transformation is required.
- Analyze data according to a nonlinear regression using the 4-parameter logistic equation (sigmoidal dose-response curve with variable slope) and a  $1/Y^2$  data weighting (the values at maximal concentrations of analyte after the hook point should be removed for correct analysis).
- The LDL is calculated by interpolating the average background counts (12 wells without analyte) + 3 x standard deviation value (average background counts + (3xSD)) on the standard curve.
- The LLOQ as measured here is calculated by interpolating the average background counts (12 wells without analyte) + 10 x standard deviation value (average background counts + (10xSD)) on the standard curve. Alternatively, the true LLOQ can be determined by spiking known concentrations of analyte in the matrix and measuring the percent recovery, and then determining the minimal amount of spiked analyte that can be quantified within a given limit (usually +/- 20% or 30% of the real concentration).
- Read from the standard curve the concentration of analyte contained in the samples.
- If samples have been diluted, the concentration read from the standard curve must be multiplied by the dilution factor.

## Assay Performance Characteristics

*AlphaLISA assay performance described below was determined using the Quick Protocol.*

### Assay Sensitivity and Precision:

The LDL and LLOQ were calculated as described above. The values correspond to the lowest concentration of analyte that can be detected in a volume of 5  $\mu$ L using the recommended assay conditions. LDL, LLOQ, EC<sub>50</sub>, maximum, and minimum counts in table below were summarized from 31 independent assays.

| Parameters             | Average | Minimum | Maximum |
|------------------------|---------|---------|---------|
| LDL ng/mL              | 0.53    | 0.10    | 1.50    |
| LLOQ ng/mL             | 1.69    | 0.36    | 4.42    |
| EC <sub>50</sub> ng/mL | 183     | 33      | 323     |
| Maximum Counts         | 330922  | 189852  | 505701  |
| Minimum Counts         | 3029    | 2100    | 5205    |
| Intra-Assay CV (%)     | 3.6     | 1.2     | 9.8     |
| Inter Assay CV (%)     | 10.8    | NA      | NA      |

\* Note that LDL/ LLOQ can be decreased (i.e. sensitivity increased) by increasing the volume of analyte in the assay (e.g. use 10  $\mu$ L of analyte in a final assay volume of 50  $\mu$ L).

### Specificity

Cross-reactivity of the AlphaLISA Bovine IgG Kit was tested using the following proteins at 0.1 µg/mL in AlphaLISA Bovine Immunoassay Buffer. Reactivity to bovine IgG is 100%.

| Protein    | % Cross-reactivity |
|------------|--------------------|
| Bovine IgA | 0.6                |
| Bovine IgM | 1.0                |
| Human IgG  | 0.0                |
| Horse IgG  | 1.3                |
| Swine IgG  | 0.0                |
| Goat IgG   | 0.0                |
| Mouse IgG  | 0.0                |

## Troubleshooting Guide

You will find detailed recommendations for common situations you might encounter with your AlphaLISA Assay kit at:

[http://www.perkinelmer.com/in/resources/technicalresources/applicationsupportknowledgebase/alphalisa-phascreen-no-washassays/alpha\\_troubleshoot.xhtml](http://www.perkinelmer.com/in/resources/technicalresources/applicationsupportknowledgebase/alphalisa-phascreen-no-washassays/alpha_troubleshoot.xhtml)

**RESEARCH USE ONLY. NOT FOR USE IN DIAGNOSTIC PROCEDURES.**

**This product is not for resale or distribution except by authorized distributors.**

**LIMITED WARRANTY:** PerkinElmer BioSignal Inc. warrants that, at the time of shipment, the products sold by it are free from defects in material and workmanship and conform to specifications which accompany the product. PerkinElmer BioSignal Inc. makes no other warranty, express or implied with respect to the products, including any warranty of merchantability or fitness for any particular purpose. Notification of any breach of warranty must be made within 60 days of receipt unless otherwise provided in writing by PerkinElmer BioSignal Inc. No claim shall be honored if the customer fails to notify PerkinElmer BioSignal Inc. within the period specified. The sole and exclusive remedy of the customer for any liability of PerkinElmer BioSignal Inc. of any kind including liability based upon warranty (express or implied whether contained herein or elsewhere), strict liability contract or otherwise is limited to the replacement of the goods or the refunds of the invoice price of goods. PerkinElmer BioSignal Inc. shall not in any case be liable for special, incidental or consequential damages of any kind.

PerkinElmer, Inc.  
940 Winter Street  
Waltham, MA 02451 USA  
P: (800) 762-4000 or  
(+1) 203-925-4602  
[www.perkinelmer.com](http://www.perkinelmer.com)



---

For a complete listing of our global offices, visit [www.perkinelmer.com/ContactUs](http://www.perkinelmer.com/ContactUs)

Copyright© 2012, PerkinElmer, Inc. All rights reserved. PerkinElmer® is a registered trademark of PerkinElmer, Inc. All other trademarks are the property of their respective owners.