



BRIDGING THE GAP BETWEEN SCIENCE AND INFORMATION TECHNOLOGY

OneSource
Laboratory Services

OneSource Lab Computing Services

Because Science Just Can't Wait

When you choose PerkinElmer's OneSource® Lab Computing Services, your operation is assigned qualified OneSource Lab Computing Analysts who are the on-site 'go-to' experts for Information Technology (IT). The Computing Analyst builds relationships with scientists and lab managers to proactively identify IT issues – addressing them before problems occur. When issues arise, the OneSource Computing Analyst takes ownership from problem to resolution – collaborating with scientific technology vendors, scientists, internal IT, and lab management organizations.

OneSource Computing Analysts also provide experienced instrument remediation, commissioning and decommissioning, refresh and security maintenance, software support, systems maintenance and monitoring, and other specialized Lab IT services. Our customers have the ability to begin with managed services that meet their needs today, with the flexibility to expand services as their demands and requirements grow.

Your partnership with OneSource Information Services provides you with a constant view of the following to ensure that your lab is always ready for the next project:

- IT Asset Inventory
- IT Risk Mitigation
- Standard Platform Deployment
- Data Sweep Technology Deployment
- Change Management
- Service-Level Agreement Solutions

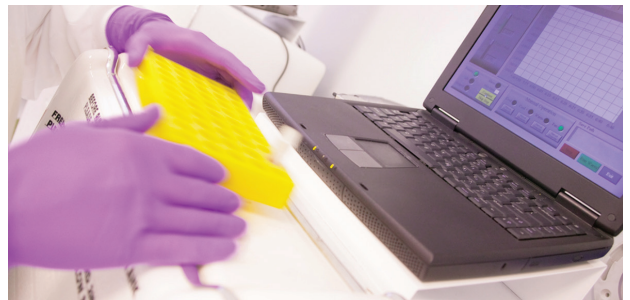


Figure 1: Lab computing.

Standards-based Intelligence for Validated Performance

PerkinElmer’s OneSource Lab Computing solutions incorporate advanced, proprietary capabilities to ensure the timely deployment and commissioning of your lab’s scientific instrumentation. The system’s intelligent design serves to stabilize the working environment with functionality that provides control of both inventory and workflows so that correct processes are followed. Having access to quality inventory information – along with a consistent approach to managing projects and knowledge-sharing – allows lab managers to maximize the productivity and efficiency of their lab computing service model.

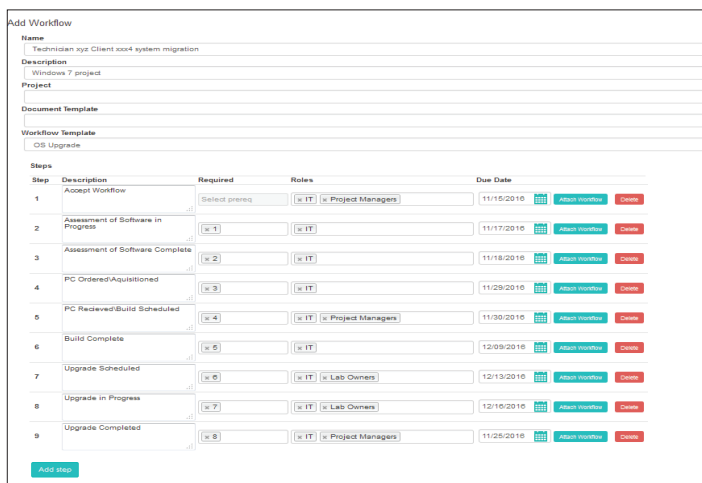


Figure 2: Homepage.

Comprehensive Data Monitoring for Proactive Problem Resolution

Our Lab Computing Solutions infrastructure includes a knowledge base that connects our Lab Computing Analysts around the world. They are linked for always-ready lab technology problem-solving capability. Our knowledge base spans parameters that include:

- Instrument inventory location/relocation
- Preventative maintenance and qualification documentation
- Firmware and Software Data Information
- Workflow data for commissioning/decommissioning
- New instrument onboarding
- IT, Safety, Facility, and lab management user groups and workflow designers

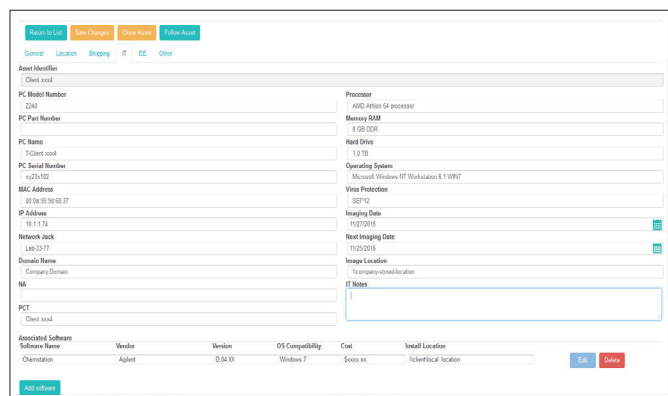


Figure 3: Asset organizer.

Responding to the Changing Lab IT Landscape

Lab IT is changing at the speed of light. OneSource Laboratory Academy is a game changer in the industry providing training programs exclusively designed for our OneSource Computing Analysts to ensure they stay current on the latest technologies and laboratory industry drivers. Staying ahead of the knowledge curve in order to efficiently solve a laboratory’s most pressing problems has been foundational in our recognition as the gold standard solution for Laboratory IT Managed Services.

The OneSource Laboratory Academy learning management system includes an expansive portfolio of online certifications for our Computer Analysts that include:

- cGxP best practice training
- SOP, Change Control and CAPA certification
- Understanding Pharmaceutical laboratory instrumentation
- Top scientific instruments used in the Pharmaceutical industry
- Advanced Chromatography Data Systems ‘Empower’ training
- LAC/e box

Computer Analyst certification training improves response time, instrument uptime, and overall scientific productivity. What’s more, having trained IT professionals that understand scientific instrumentation and workflows in the lab builds trust between scientists, lab managers and IT – all contributing to better scientific outcomes.

With OneSource Lab Computing Solutions and your knowledgeable OneSource Computing Analyst, see your scientific endeavors become more efficient, gaining enhanced productivity, better project outcomes, and the realization of your business goals. You’ll have the added intelligence and support you need to tackle even the most demanding Lab IT challenges.

To learn more about OneSource Information Services please visit: perkinelmer.com/onesource/#information-services

PerkinElmer, Inc.
940 Winter Street
Waltham, MA 02451 USA
P: (800) 762-4000 or
(+1) 203-925-4602
www.perkinelmer.com



For a complete listing of our global offices, visit www.perkinelmer.com/ContactUs

Copyright ©2016-2017, PerkinElmer, Inc. All rights reserved. PerkinElmer® is a registered trademark of PerkinElmer, Inc. All other trademarks are the property of their respective owners.