



Living Image® Version 4.3.1 Software

Service Pack 1

Installation and Licensing Guide



© Copyright 2012 Caliper Life Sciences, Inc. All rights reserved.
P/N CLS135469 Rev 01

Contents

Chapter 1	Before You Begin	1
	Requirements	1
	Technical Support	2
Chapter 2	Installing the Living Image Software On a PC	3
	Installing the Software From the CD-ROM	3
	Troubleshooting Installation	7
	Installing the Software Over the Internet	8
Chapter 3	Installing the Living Image Software On a Macintosh	10
	Installing the Software From the CD-ROM	10
	Installing the Software Over the Internet	14
Chapter 4	Activating a License	16
	Activating a License Over the Internet	16
	Manually Activating a License	18
	Returning a License	21
	Troubleshooting Licensing Error Messages	21

1 Before You Begin

Requirements

Technical Support on page 2

The Living Image® software can be installed from a CD-ROM or the Caliper Life Sciences web site. [Table 1.1](#) shows where to find particular installation instructions.

Table 1.1 Installation types

Install From	Platform	See Page
CD	PC	3
	Macintosh	10
www.caliperls.com	PC	8
	Macintosh	14

1.1 Requirements

Hardware & Software Requirements

For optimum performance, the Living Image® 4.3.1 software requires hardware and software that meet or exceed the following minimum requirements. If you will be using the 3D Multi-Modality tools, the graphics card must meet the requirements in [Table 1.3](#).



NOTE: The Living Image software only supports English operating systems.

Table 1.2 Minimum hardware requirements without the 3D Multi-Modality tools

Item	Specification (PC or Macintosh)
Processor	Intel Core 2 Duo CPU or higher processor recommended
RAM recommended	4 GB or greater
Virtual memory	2 - 4 GB
Hard drive available space	Minimum: 300MB Recommended: 1 GB and above
Graphics card	256MB dedicated, OpenGL2.0 or later
Display	17 inch or larger

Table 1.3 Graphics card requirements for the 3D Multi-Modality tools

Item	Specification
OpenGL Version Requirement*	OpenGL 2.0 and above.
OpenGL Extension Requirement*	GL_EXT_Texture3D

Table 1.3 Graphics card requirements for the 3D Multi-Modality tools (continued)

Item	Specification
Graphics Card Memory	Recommended: 1GB (Dedicated)
Consumer Graphics Cards (Desktop/ Mobile, Windows/Mac)	Supported: <ul style="list-style-type: none"> – NVIDIA® GeForce® 8 Series and above (8, 9, 100, 200, 300 and 400 series) – ATI Radeon™ HD 4000 Series and above (4000 and 5000 series) Recommended: <ul style="list-style-type: none"> – Desktop - NVIDIA GeForce GT 240 and above – Mobile - NVIDIA GeForce GT 230M and above
Workstation Graphics Cards (Desktop/ Mobile, Windows/Mac)	Supported: <ul style="list-style-type: none"> – NVIDIA® Quadro® NVS Series and Above (NVS & FX series) – ATI FireGL™ V5600 and Above (FireGL, FirePro & CrossFire series) Recommended: <ul style="list-style-type: none"> – Desktop - Quadro FX 1800 and above – Mobile - Quadro FX 880M and above

*If these specifications are not met, the 3D Multi-Modality tools do not appear in the tool palette.

Table 1.4 Minimum software requirements

Operating System	Requirement
Windows	Windows 7 64-bit, Windows 7 32-bit, Windows XP
Macintosh	Mac OS 10.5 to 10.7

1.2 Technical Support

If you need technical support, please contact Caliper Life Sciences at:

Telephone: 1.877.522.2447 (US)
1.508.435.9500

E-mail: Tech.Support@caliperls.com

Fax: 1.508.435.3439

Address: Caliper Life Sciences
US Corporate Headquarters
940 Winter Street
Waltham
Massachusetts 02451
USA

2 Installing the Living Image Software On a PC

Installing the Software From the CD-ROM

Installing the Software Over the Internet on page 8

2.1 Installing the Software From the CD-ROM



NOTE: The Living Image® 4.3.1 software can only be installed on a Windows 7 (32-bit or 64-bit) or Windows XP operating system. Administrative privileges are required to install and configure the Living Image 4.3.1 software on Windows 7 operating systems.

The Living Image software will be installed at:

- 32-bit application on Windows 7 32-bit OS and Windows XP– C:\Program Files\Caliper Life Sciences\Living Image
- 32-bit Application on Windows 7 64-bit OS – C:\Program Files (x86)\Caliper Life Sciences\Living Image
- 64-bit Application on Windows 7 64-bit OS – C:\Program Files\Caliper Life Sciences\Living Image

The 32-bit application will work on a 32-bit or 64-bit operating system; however, the 64-bit application is recommended for a 64-bit operating system. Only the 32-bit application can be installed on a 32-bit operating system.

1. Insert the Living Image 4.3.1 software CD-ROM into the workstation computer.

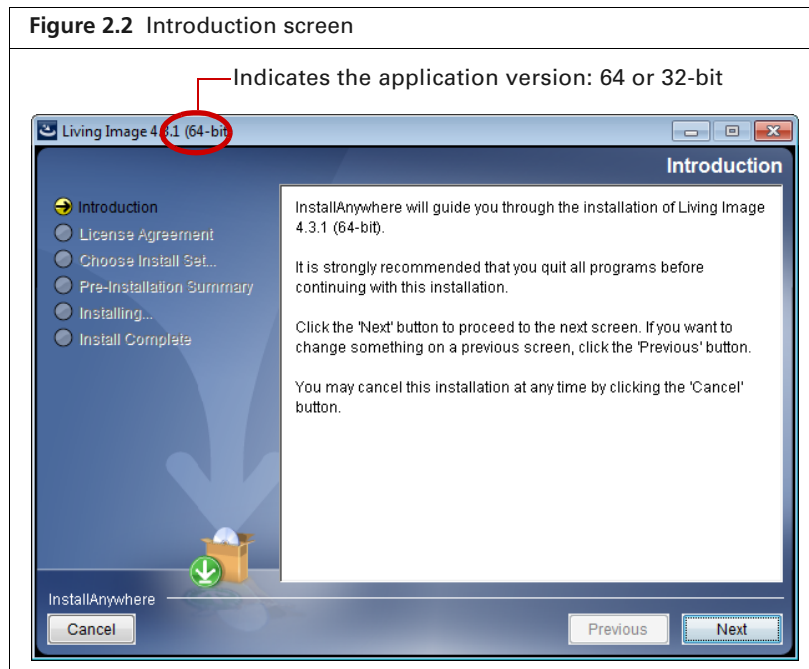
The Welcome screen appears.



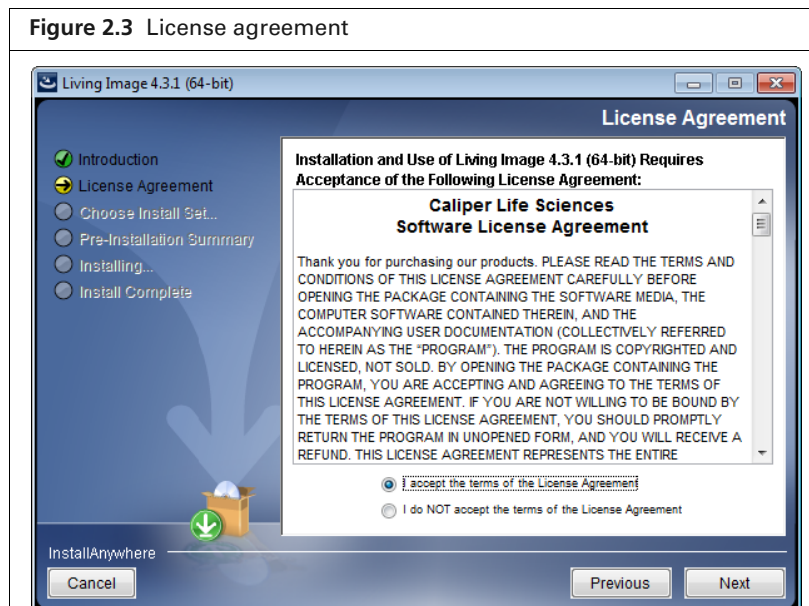
NOTE: If the Welcome screen does not appear, use Windows Explorer to navigate to \Windows\directory on the installation CD/ROM. Right-click the Install.exe file and select “Run as administrator” from the shortcut menu, then enter the local administrator’s user name and password.



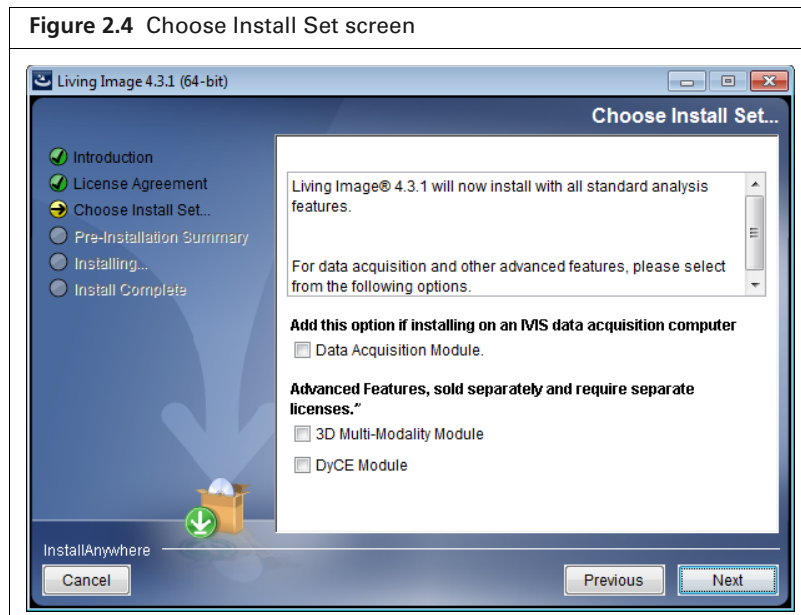
2. In the Welcome screen, choose a language and click **OK**.
The Introduction screen appears (Figure 2.2).



3. Review the introductory information and click **Next**.
4. Read the license agreement that appears.



5. To continue with the installation, accept the terms of the license agreement and click **Next**.
The Choose Install Set screen appear.



Living Image 4.3.1 is now ready to install the standard analysis features.

Data Acquisition Module - Choose this option if you are installing the software on an acquisition workstation.

3D Multi-Modality Module - Choose this option to install the 3D Multi-Modality tools.

DyCE Module - Choose this option to install the DyCE tools.

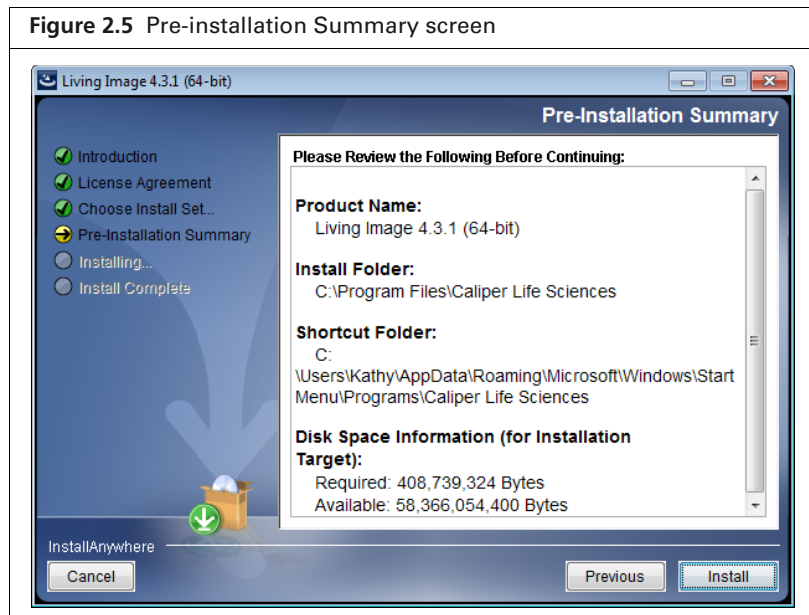


NOTE: The 3D Multi-Modality tools and the DyCE tools each require a separate license.

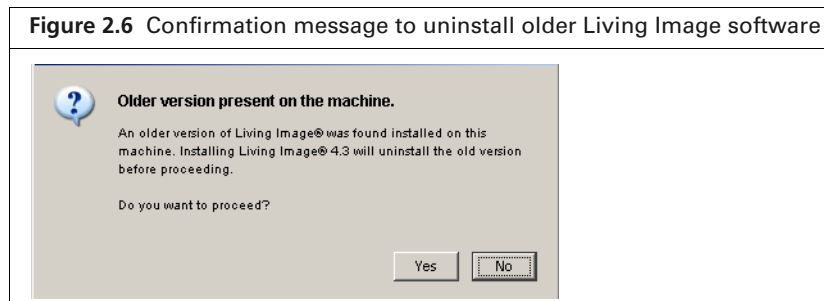
6. Click **Next**
7. In the Pre-Installation Summary screen, confirm that the installation information is correct, then click **Install**.

If the Living Image 4.3.1 installer detects the Living Image 3.x application (analysis or acquisition version), you are prompted to confirm uninstallation of the earlier version (Figure 2.6).

Click **Yes** in the confirmation message to uninstall the Living Image 3.x software and install the Living Image 4.3.1 software. Click **No** to terminate the installation program.



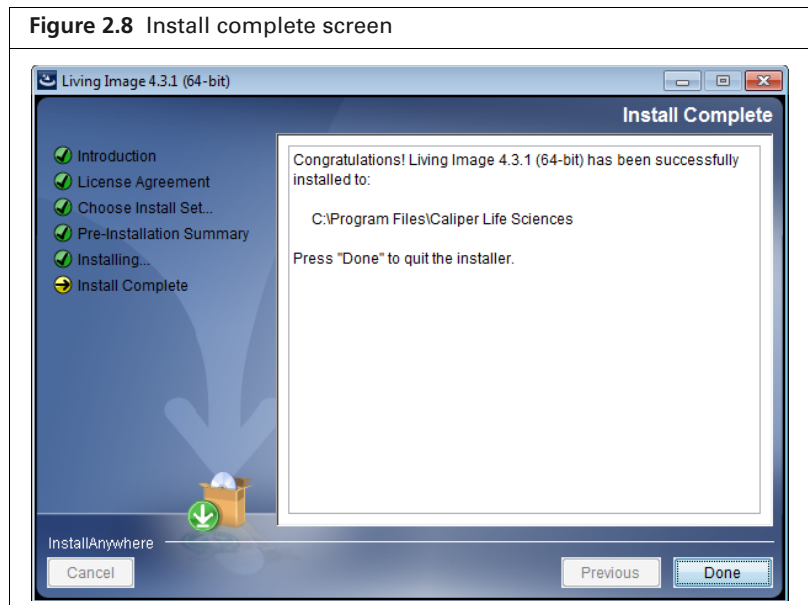
NOTE: If older Living Image software is installed on the acquisition computer, the Living Image 4.3.1 installer will uninstall the old software and copy all essential acquisition calibration files (CameraInfo.txt, CameraLog.txt, Background folder, LI_AutoBkgList.csv, Emfilters folder, FLReference folder, SLReference folder, CCDCal folder, if such exists) to the Living Image 4.3.1 directory.



NOTE: If the message shown in Figure 2.7 appears, click **OK**. The installation will proceed without any problems.



8. Click **Done** when the installation is finished.



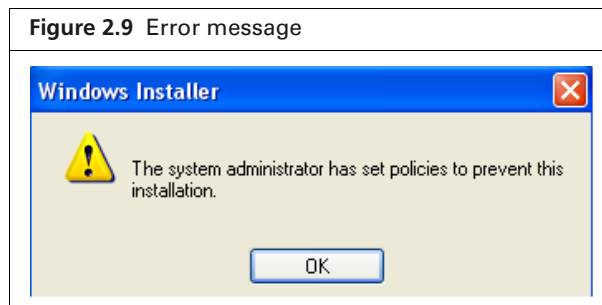
9. After successful installation on an acquisition computer, start the Living Image 4.3.1 software and verify that you can initialize the IVIS® Imaging System. If you are unable to initialize the imaging system, contact Caliper technical support.



NOTE: After you install the Living Image® software, you must activate the permanent license. If the 3D Multi-Modality and DyCE tools were installed, a separate license for each must be activated. See [page 16](#) for more information.

2.2 Troubleshooting Installation

If the error message shown in [Figure 2.9](#) appears, it indicates that the installation cannot proceed due to limited user privileges. Click OK in the message to cancel the installation.



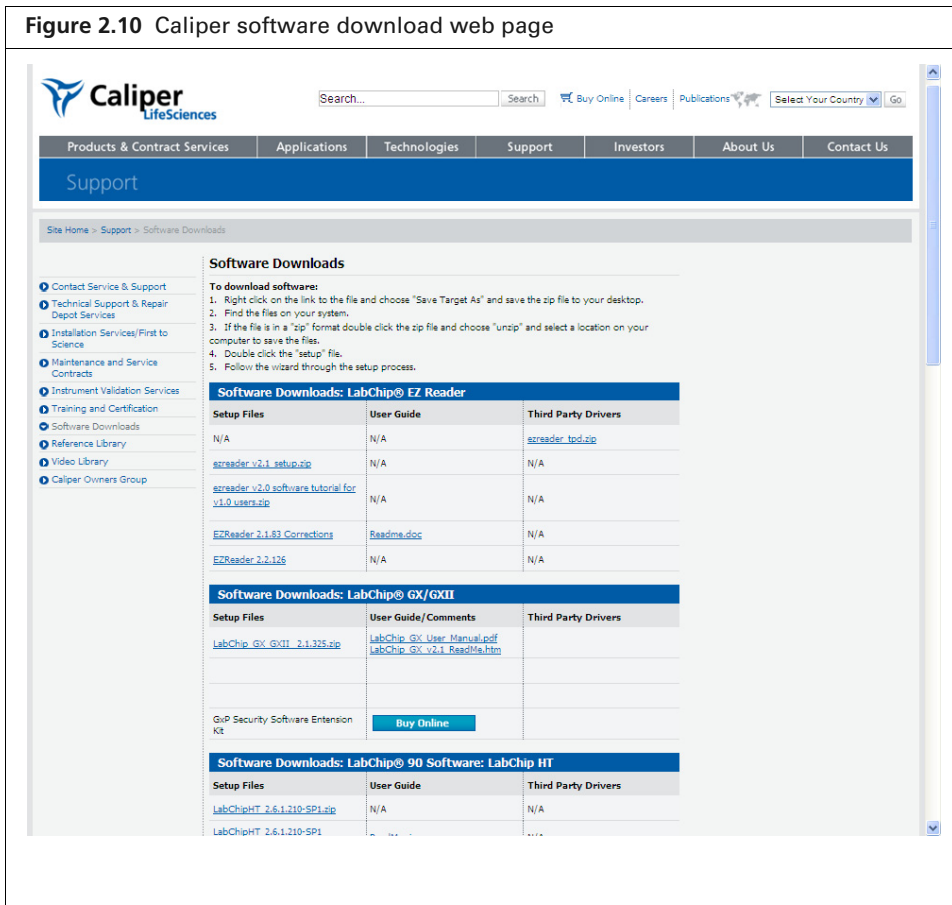
To resolve this issue, do either of the following:

- Login with the Administrator user account and start the installation
- Right-click the Install.exe file and select “Run as administrator” from the shortcut menu, then enter the local administrator’s user name and password.

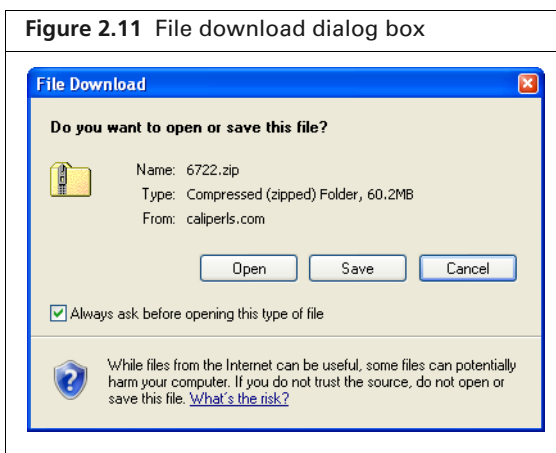
If installation does not proceed, please contact your IT department.

2.3 Installing the Software Over the Internet

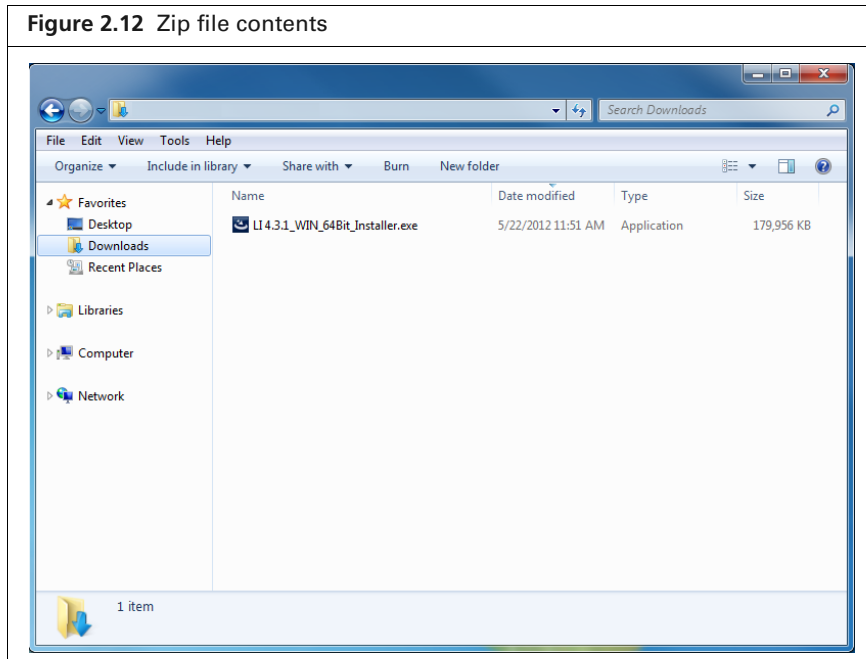
1. Go to the download URL: <http://caliperls.com/support/software-downloads.htm>



2. On the web page, scroll down to Software Downloads: Optical Imaging: Living Image Software.
3. To install the software on a PC, click LI_<version>_WIN_Install.zip.
The File Download dialog box appears.



4. Click **Save**.
5. When the download is complete, double-click the LI_<version>_WIN_Install.exe in the zip file.

Figure 2.12 Zip file contents

6. In the Welcome screen that appears, choose a language and click **OK**. To continue with the installation, follow step 2 to step 9 in *Installing the Software From the CD-ROM*, page 3.



NOTE: After you install the software, you must activate the permanent license. See [page 16](#) for more details.

3 Installing the Living Image Software On a Macintosh

Installing the Software From the CD-ROM

Installing the Software Over the Internet on page 14

3.1 Installing the Software From the CD-ROM

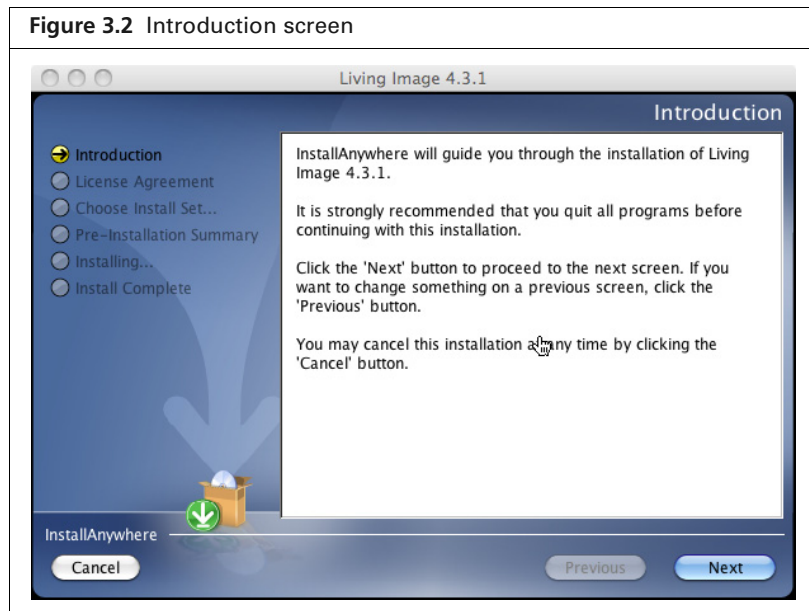


NOTE: The Living Image® 4.3.1 software requires Mac OS X 10.5 or later.

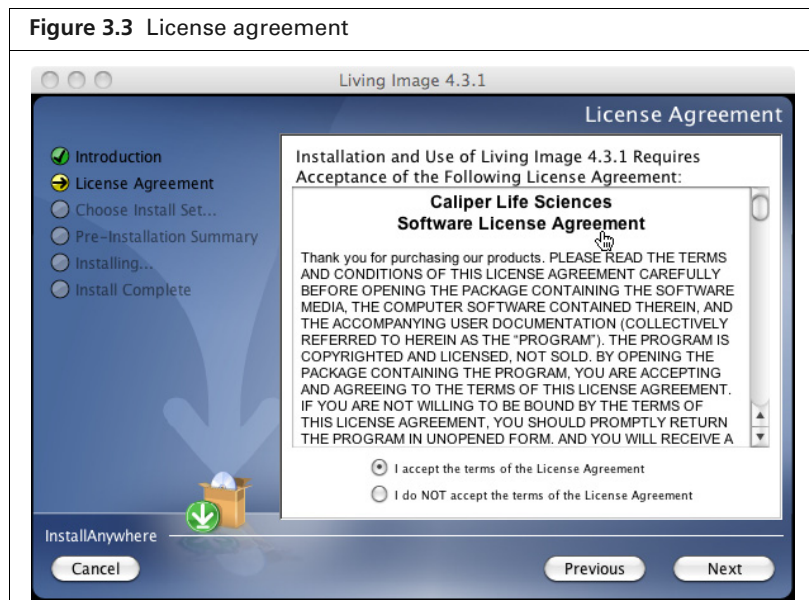
1. Insert the Living Image 4.3.1 software CD-ROM into the workstation computer.
The Welcome screen appears.



2. In the Welcome screen, choose a language and click **OK**.
The Introduction screen appears (Figure 3.2).
3. Review the introductory information that appears and click **Next**.



4. Read the license agreement. To continue with the installation, accept the terms of the license agreement and click **Next**.



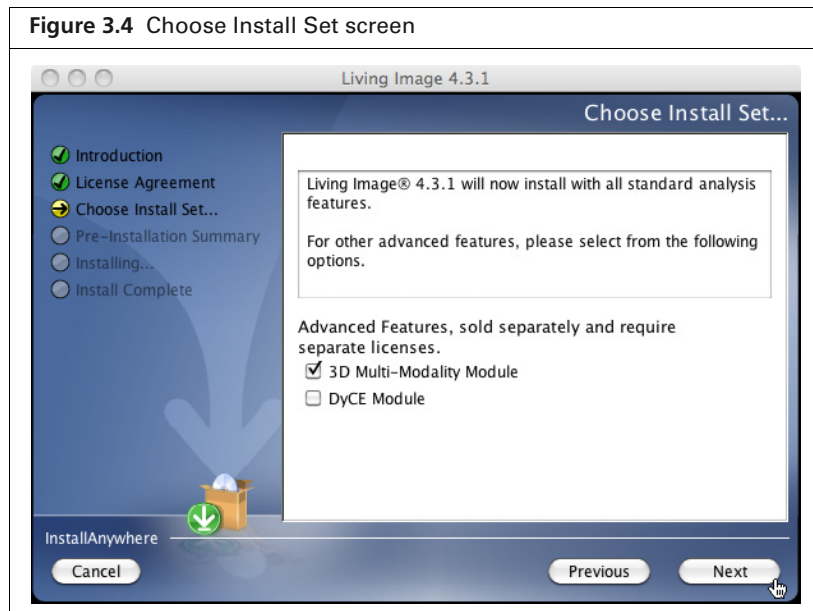
NOTE: Only the analysis features of the Living Image® software can be installed on a Macintosh.

5. If you are installing the optional 3D Multi-Modality and/or DyCE tools, choose these options in the Choose Install Set screen. Click **Next**.

The installation proceeds.



NOTE: The 3D Multi-Modality and the DyCE tools each require a separate license.

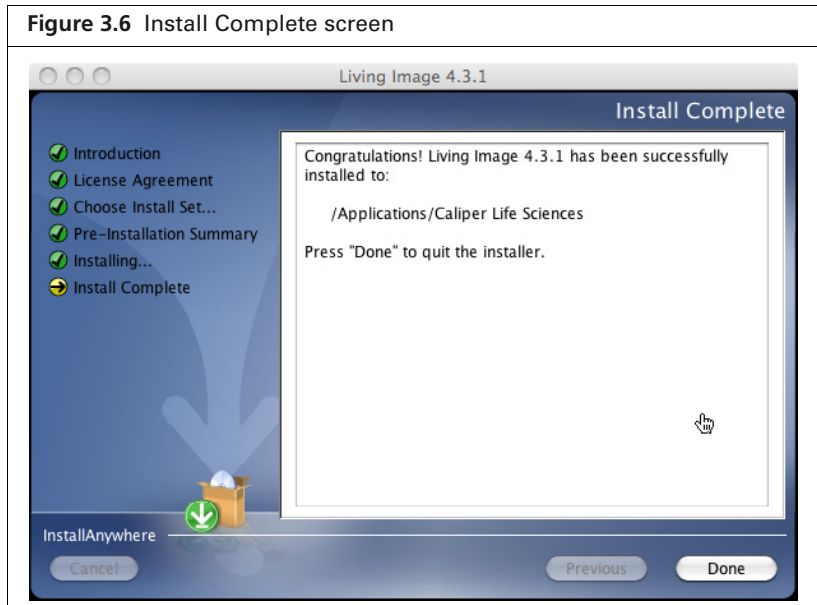


6. In the Pre-Installation Summary screen, confirm that the installation information is correct, then click **Install**.

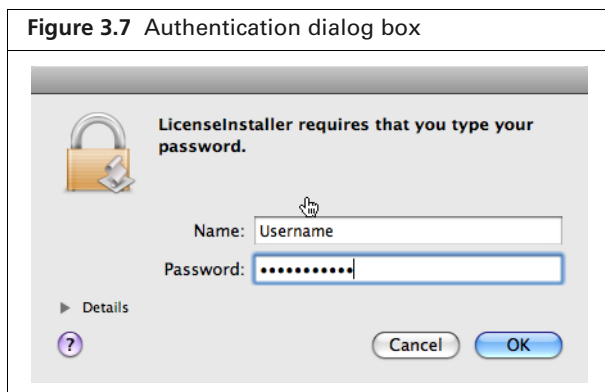
The installation proceeds.



7. After the installation is finished, click **Done** in the Install Complete screen.



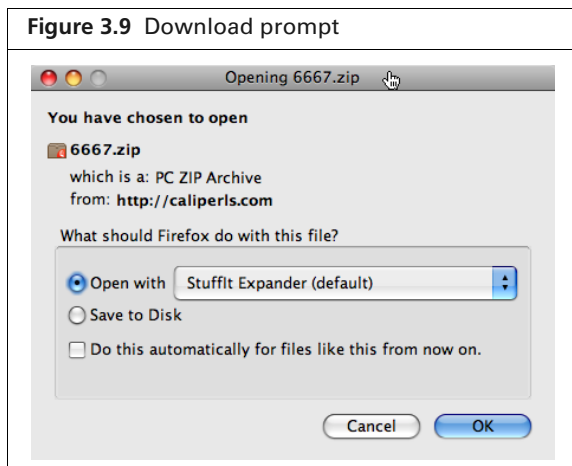
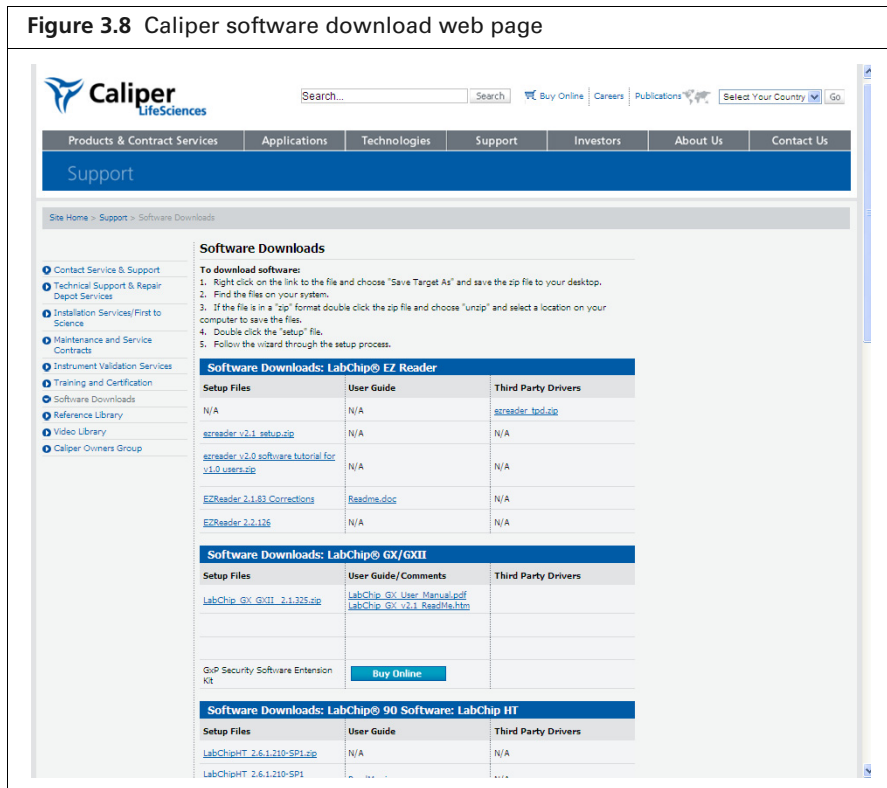
8. Enter your user name and password in the Authenticate dialog box that appears and click **OK**.



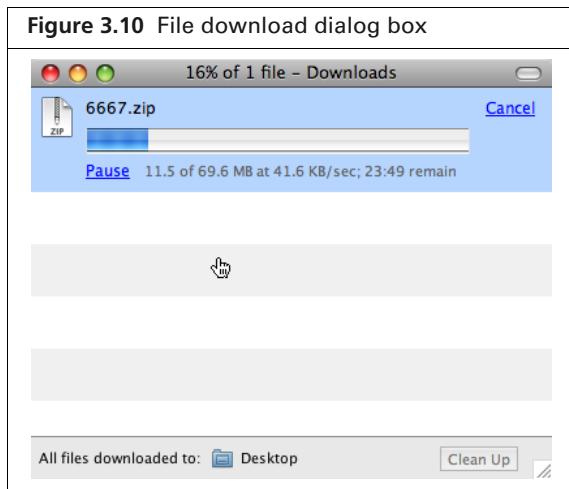
NOTE: After you install the Living Image® software, you must activate the permanent license. If the 3D Multi-Modality and DyCE tools were installed, a separate license for each must be activated. See [page 16](#) for more information.


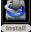
3.2 Installing the Software Over the Internet

1. Go to the download URL: <http://www.caliperls.com/support/software-downloads.htm>.

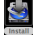


2. On the web page, scroll down to Software Downloads: Optical Imaging: Living Image Software.
3. To install the software on a Macintosh, click LI_<version>_MAC_Install.zip. The File Download dialog box appears.



4. Double-click the .zip file . (In this example, the file was saved to the desktop.)
The install icon  appears on the desktop.



5. Double-click the install icon .
The installation starts.
6. Follow step 3 to step 8 on [page 10 to 13](#).



NOTE: After you install the software, you must activate the permanent license. See [page 16](#) for more details on activating a license.

4 Activating a License

Activating a License Over the Internet

Manually Activating a License on page 18

Activating a License Over the Internet on page 16

Troubleshooting Licensing Error Messages on page 21

The Living Image® software is licensed to individual workstations. The software provided with an IVIS® Imaging System includes a five seat license that permits you to install the software for data analysis on up to five workstations. After the software is installed, you have 30 days to activate the permanent license.

The 3D Multi-Modality Tools plug-in and the DyCE plug-in each require a separate license.

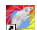
There are two ways to activate a license:

- Internet activation - Activates the license over the Internet
- Manual activation - For workstations not on a network

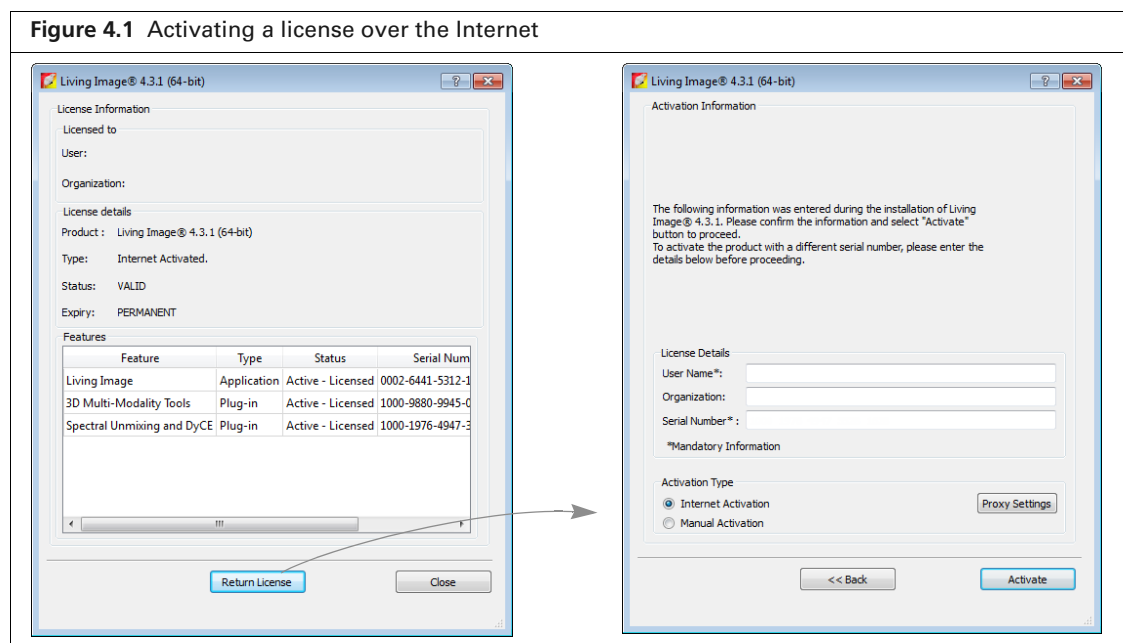


NOTE: A license from Living Image 3.x cannot be transferred to Living Image 4.3.1.

4.1 Activating a License Over the Internet

1. Start the Living Image software (double-click the  icon on the desktop).

The main window appears and shows the number of days that remain to activate a license for the Living Image software and the 3D Multi-Modality Tools and/or DyCE plug-in (if the 3D Multi-Modality and/or DyCE tools were selected during installation).

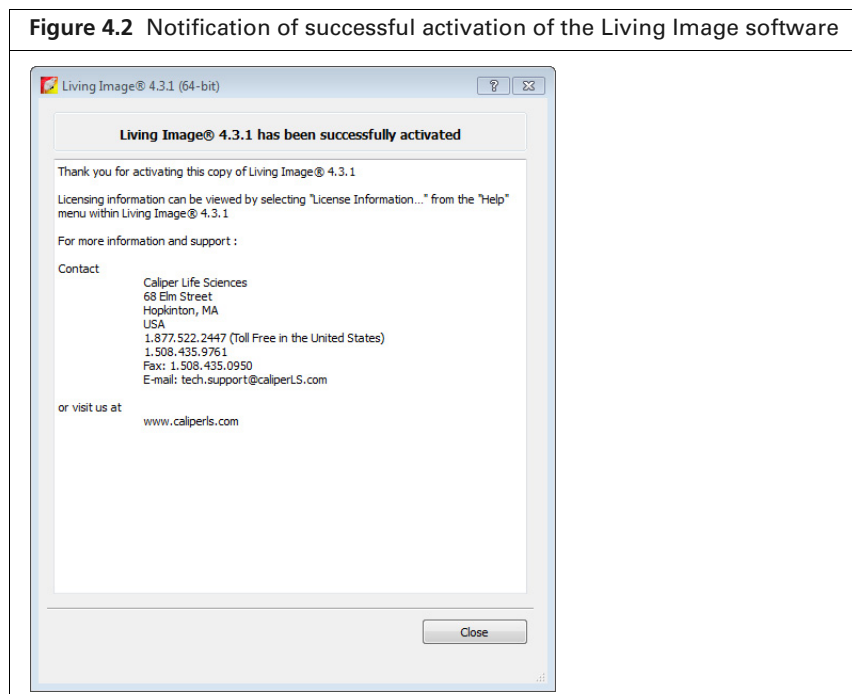


2. Click **Activate License**.



NOTE: To evaluate the software without activating a license, click **Evaluate**.

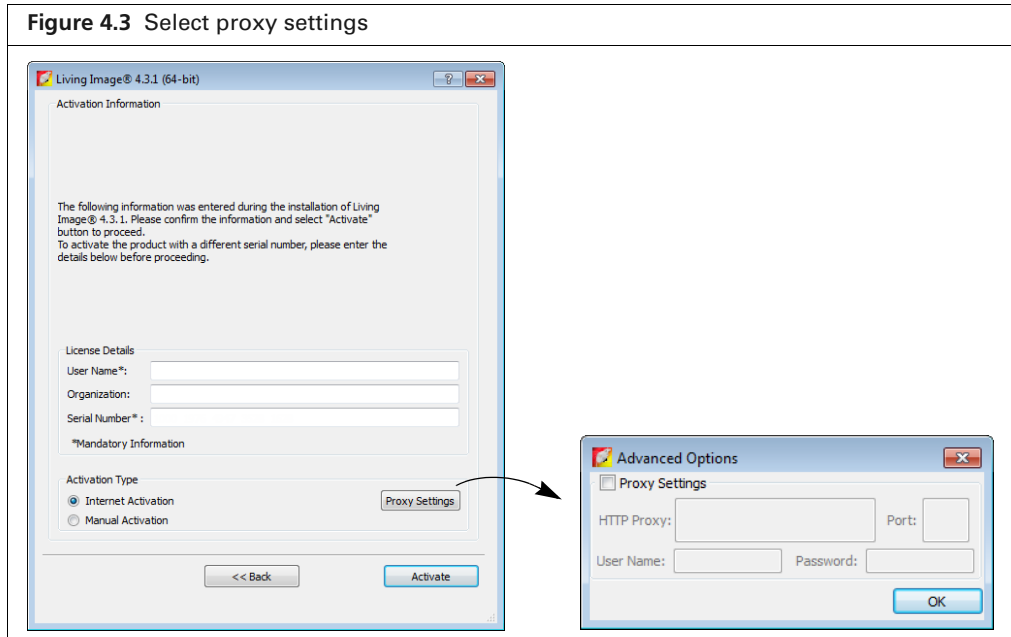
3. In the dialog box that appears, enter your user name, organization name.
4. To activate the Living Image license, enter the serial number for the software application.
To activate the 3D Multi-Modality Tools license, enter the serial number for the 3D Multi-Modality tools plug-in.
To activate the DyCE tools license, enter the serial number for the DyCE tools plug-in.
5. Choose the Internet Activation option and click **Activate**
You are notified of a successful activation.



Specifying Proxy Settings

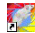
By default, the activation connects directly to the license server on port 443. If a proxy server is used at your location, specify the proxy settings.

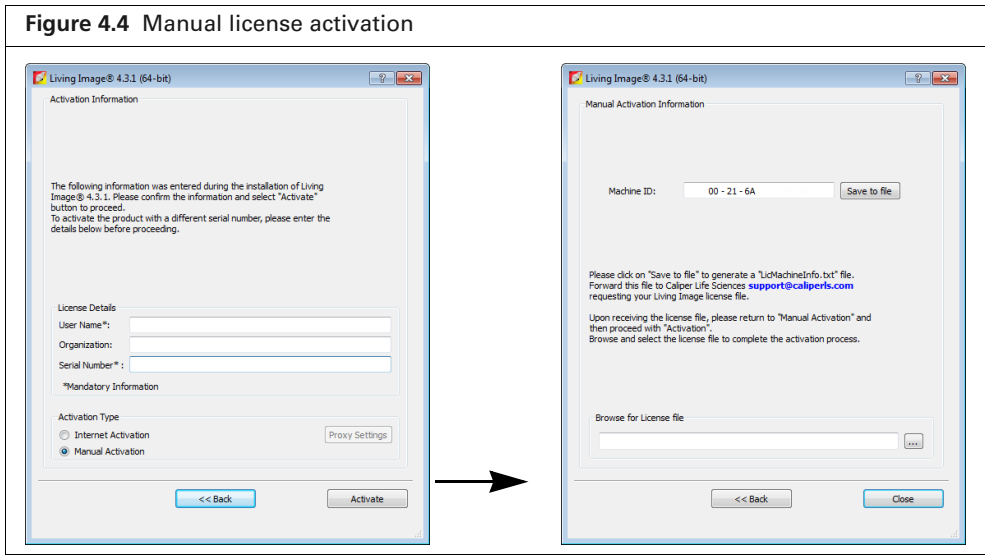
1. Click **Proxy Settings**.
2. In the dialog box that appears, put a check mark next to Proxy Settings and enter the values for the proxy server. Contact your IT department for details about the correct proxy server settings.




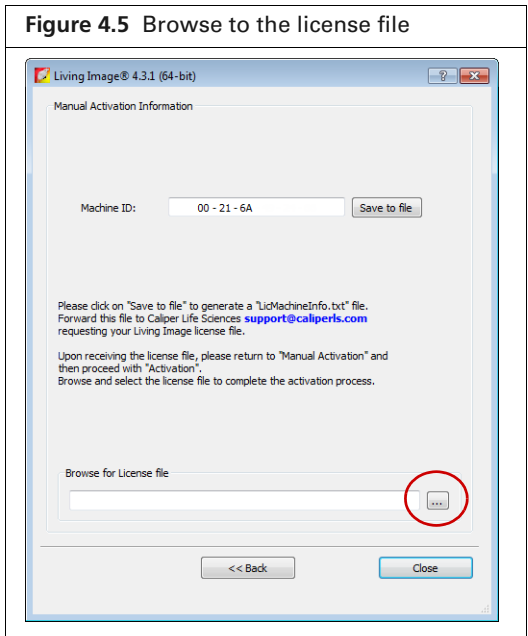
4.2 Manually Activating a License

For manual activation, generate a machine ID file and e-mail it to Caliper technical support. You will receive a license file by e-mail that can be manually activated.

1. Start the Living Image software (double-click the  icon on the desktop).
The main window appears and shows the number of days that remain to activate the license.
2. Click **Activate License**.
3. In the dialog box that appears, enter your user name, organization name, and software serial number.
4. Choose the Manual Activation option and click **Activate**.
5. In the dialog box that appears:
 - a. Click **Save to file**.
 - a. Select a directory for the file and click **Save**.
6. E-mail the machine ID file to tech.support@caliperls.com.



- After you receive the license file from Caliper technical support, click the **Browse** button  and navigate to the license file.



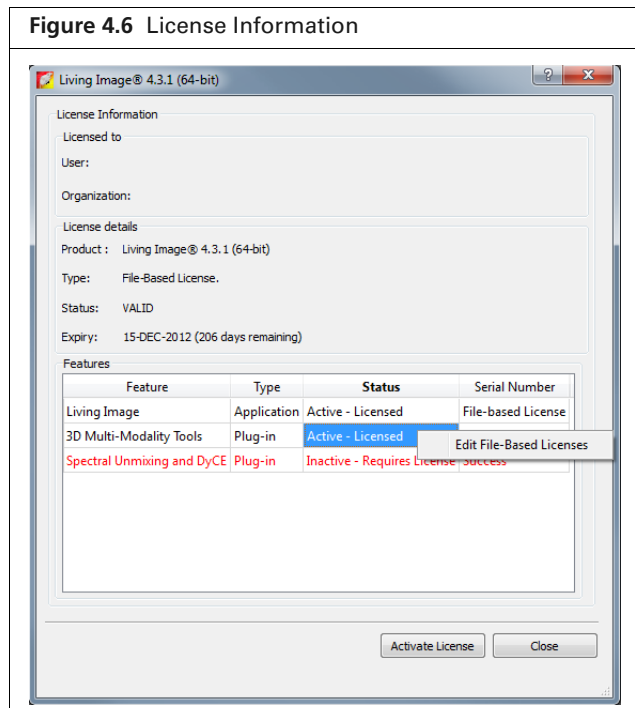
- Click **Close**.
The license is activated.



Editing a License File

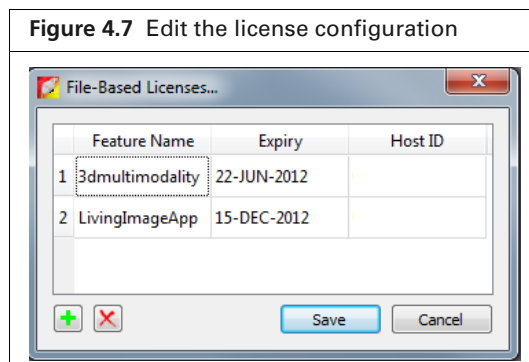
Sometimes it may be necessary to edit a license file for renewal or repair purposes.

To edit a license file:

1. Open the license information dialog box (select **Help** → **License Information** on the menu bar).
2. Right-click the serial number of the file license and select **Edit File-Based Licenses** from the shortcut menu.



3. In the dialog box that appears, use the Add or Delete buttons   to edit the license configuration.



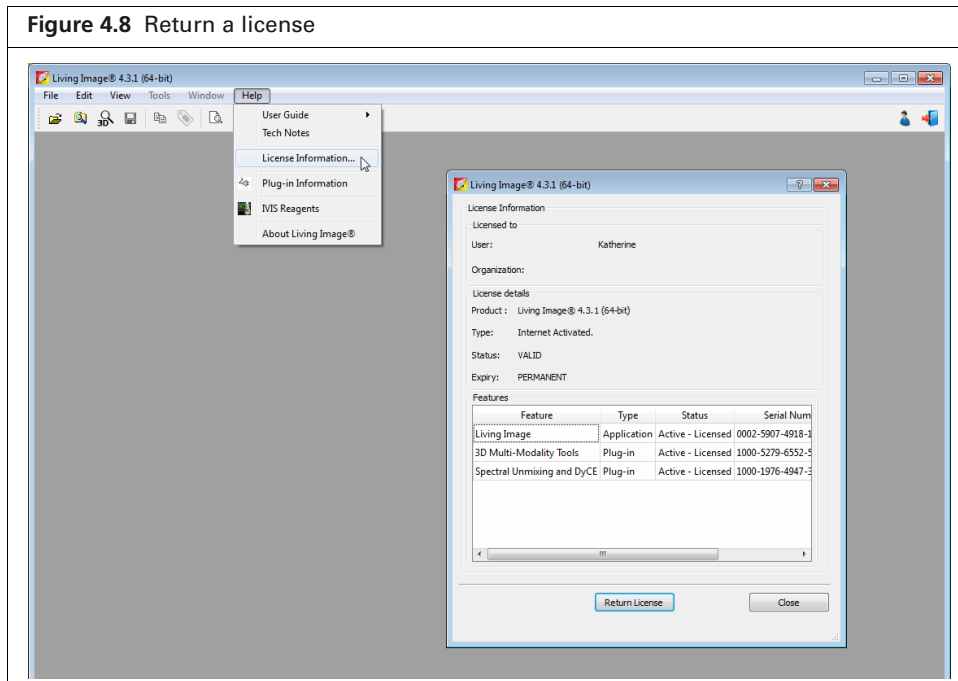
4. Click **Save**.
5. Restart the Living Image software.

4.3 Returning a License

You can return a license so that it is available for use on another workstation. If you have renewed a license, you must return the old license before you can activate the new license.

To return a license:

1. Select **Help** → **License Information** on the menu bar.
2. In the dialog box that appears, click **Return License** and click **Close**.



4.4 Troubleshooting Licensing Error Messages

Table 4.1 Licensing error messages

Error Message	Possible Causes	Solutions
Unable to send application activation to remote server.	The workstation is unable to reach the Caliper Licensing server on the Internet on port 443. This may be because the workstation is not connected to a network or the network firewall is preventing communication on port 443.	<ol style="list-style-type: none"> 1. Verify that the workstation can connect to the Internet. 2. Check the local firewall policies of the IT group responsible for the network.
The activation of the fulfillment is denied by the activation policy because max extra acts exceeded #9679-7028.	The maximum number of seats available on the license have been activated.	<ol style="list-style-type: none"> 1. Return a Living Image 4.3.1 license from another workstation. 2. Acquire additional license sets from Caliper Life Sciences.